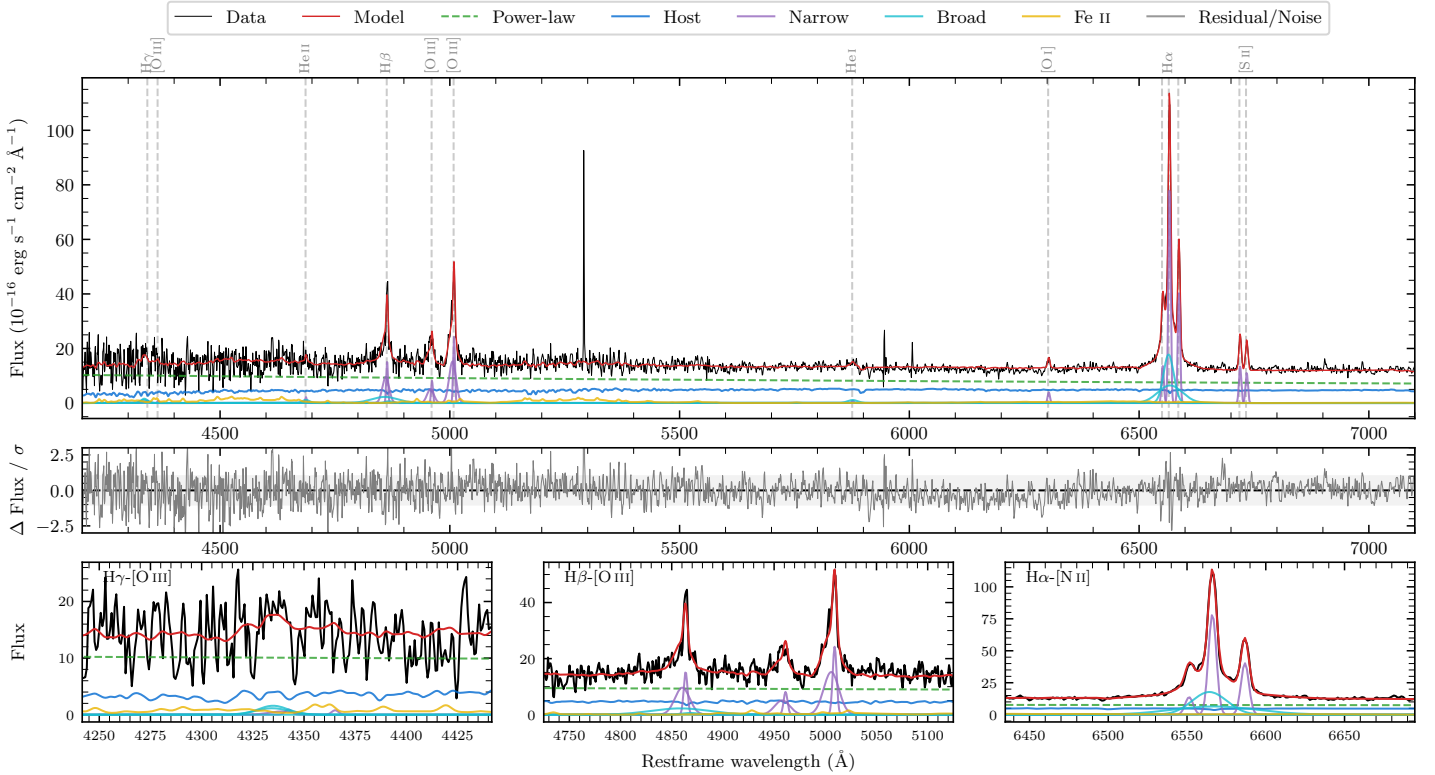
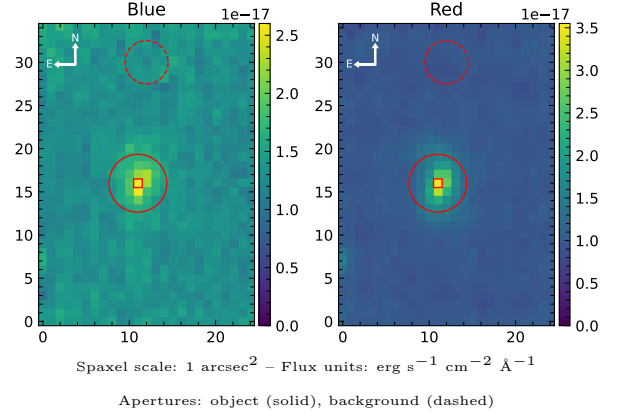


LEDA 978862

Spectrum ID	193235745_sp1	Spectrum type	Sy 1.5
Alt name	g1653546-102300	Quality flag	good
z	0.0601	AGN reference	6dFGS
RA, Dec	253.4776, -10.3834	MW $E(B - V)$	0.671
MJD	60160.42	Power law α_ν	-1.31 ± 0.13
SNR/ \AA B/R	5.6/8.3	$\log L_{5100, \text{AGN}}$	43.60 ± 0.03
Obs airmass	1.07	$\log H\beta_{\text{Br}}/[\text{O III}]$	-0.34 ± 0.11
SMSS ID	193235745	$\log M_{L5100}/M_\odot$	7.83 ± 0.14
Neighbour	None $< 15''$	$\log M_{\text{H}\alpha}/M_\odot$	6.77 ± 0.05
SMSS $\langle r_6''_{\text{ap}} \rangle$	nan \pm nan	$\log M_{\text{H}\beta}/M_\odot$	7.57 ± 0.15
2MASS K_{ext}	12.57 ± 0.09	$\log M_{[\text{O III}]} / M_\odot$	7.88 ± 0.14



Emission Line Measurements

Line	$\log L$ (erg s ⁻¹)	FWHM (km s ⁻¹)	σ (km s ⁻¹)	EW (Å)
H γ Narrow	40.09 ± 0.45	395 ± 66	390 ± 27	1.39 ± 1.21
Hγ Broad	40.76 ± 0.17	1241 ± 81	337 ± 25	5.49 ± 1.40
[O III] 4364	—	—	—	—
He II Narrow	39.95 ± 0.36	273 ± 63	115 ± 25	1.08 ± 0.59
He II Broad	40.32 ± 0.34	1188 ± 63	504 ± 25	2.49 ± 1.31
H β Narrow	41.35 ± 0.04	395 ± 66	391 ± 27	28.03 ± 1.23
Hβ Broad	41.22 ± 0.11	3526 ± 577	1464 ± 60	19.91 ± 2.87
[O III] 5007	41.56 ± 0.02	395 ± 66	391 ± 27	46.56 ± 1.24
He I Narrow	39.65 ± 0.42	273 ± 63	115 ± 25	0.63 ± 0.44
He I Broad	40.44 ± 0.20	1316 ± 64	559 ± 26	3.94 ± 0.99
[O I] 6300	40.34 ± 0.09	273 ± 63	115 ± 25	3.25 ± 0.44
H α Narrow	41.66 ± 0.01	273 ± 63	115 ± 25	69.76 ± 0.70
Hα Broad	41.93 ± 0.01	1427 ± 74	667 ± 28	129.60 ± 1.87
[N II] 6585	41.37 ± 0.02	273 ± 63	115 ± 25	35.94 ± 0.60
[S II] 6718	40.90 ± 0.03	273 ± 63	115 ± 25	12.46 ± 0.50
[S II] 6732	40.82 ± 0.04	273 ± 63	115 ± 25	10.27 ± 0.52

Emission Summary

H α broad SNR	9.13
H β broad SNR	1.13
H γ broad SNR	1.22
AGN frac	0.67
Host frac	0.33
$\log L_{5100, \text{Host}}$	43.29
Fe II/H β	2.28
Fe II/[O III]	0.99

Quality Flags

spurious_hab/hbb	0/0
15100	0
balmer	1
balmer_snr	2
hb_width	0
balmer_width	1