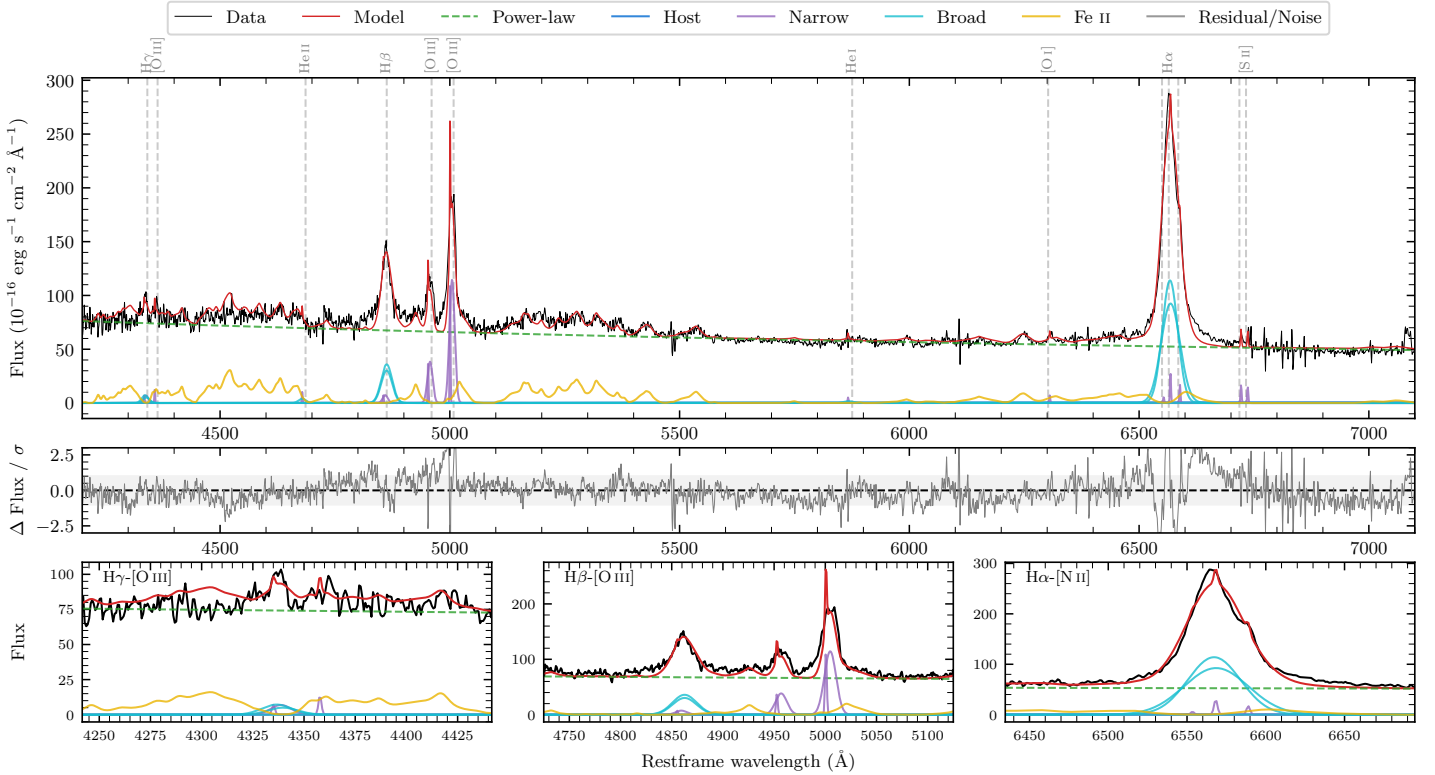
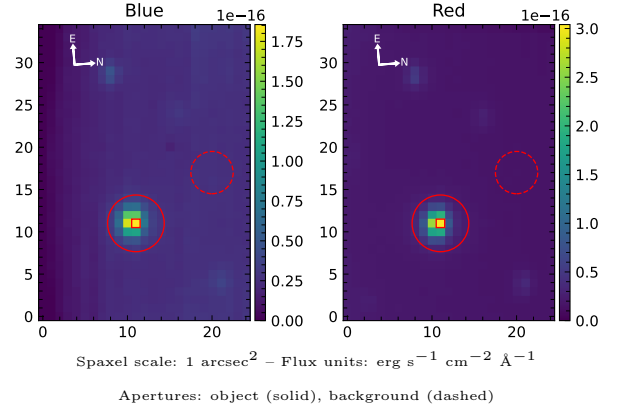


IRAS 16433–1118

| | | | |
|--|--------------------|--|------------------|
| Spectrum ID | 192952618_sp1 | Spectrum type | Sy 1.5 |
| Alt name | g1646104–112404 | Quality flag | good |
| z | 0.0734 | AGN reference | 6dFGS |
| RA, Dec | 251.5433, –11.4012 | MW $E(B - V)$ | 0.500 |
| MJD | 59725.63 | Power law α_ν | -1.17 ± 0.04 |
| SNR/Å B/R | 8.5/13.0 | $\log L_{5100, \text{AGN}}$ | 44.65 ± 0.01 |
| Obs airmass | 1.07 | $\log H\beta_{\text{Br}}/[\text{O III}]$ | 0.02 ± 0.03 |
| SMSS ID | 192952618 | $\log M_{L5100}/M_\odot$ | 7.65 ± 0.02 |
| Neighbour | 12.3", 192952617 | $\log M_{\text{H}\alpha}/M_\odot$ | 7.78 ± 0.05 |
| SMSS $\langle r_{6''} \text{ap} \rangle$ | 16.02 ± 0.03 | $\log M_{\text{H}\beta}/M_\odot$ | 7.51 ± 0.02 |
| 2MASS K_{ext} | nan \pm nan | $\log M_{[\text{O III}]} / M_\odot$ | 7.69 ± 0.03 |



Emission Line Measurements

| Line | $\log L$ (erg s^{-1}) | FWHM (km s^{-1}) | σ (km s^{-1}) | EW (\AA) |
|-----------------------------------|------------------------------------|---------------------------------|---------------------------------|-------------------------------------|
| H γ Narrow | 41.16 ± 0.37 | 540 ± 68 | 331 ± 29 | 1.44 ± 0.52 |
| Hγ Broad | 41.59 ± 0.19 | 1203 ± 64 | 432 ± 25 | 3.24 ± 0.65 |
| [O III] 4364 | 40.57 ± 0.34 | 124 ± 62 | 51 ± 25 | 0.37 ± 0.20 |
| He II Narrow | 40.49 ± 0.38 | 124 ± 62 | 51 ± 25 | 0.33 ± 0.18 |
| He II Broad | 41.06 ± 0.33 | 1182 ± 63 | 502 ± 25 | 1.24 ± 0.58 |
| H β Narrow | 41.24 ± 0.29 | 540 ± 68 | 331 ± 29 | 1.88 ± 0.51 |
| Hβ Broad | 42.45 ± 0.03 | 1716 ± 28 | 616 ± 25 | 31.21 ± 0.76 |
| [O III] 5007 | 42.44 ± 0.02 | 540 ± 68 | 331 ± 29 | 30.72 ± 0.56 |
| He I Narrow | 40.27 ± 0.39 | 124 ± 62 | 51 ± 25 | 0.24 ± 0.13 |
| He I Broad | 40.80 ± 0.31 | 1187 ± 63 | 504 ± 25 | 0.81 ± 0.37 |
| [O I] 6300 | 40.44 ± 0.24 | 124 ± 62 | 51 ± 25 | 0.38 ± 0.12 |
| H α Narrow | 41.09 ± 0.09 | 124 ± 62 | 51 ± 25 | 1.71 ± 0.20 |
| Hα Broad | 43.14 ± 0.01 | 1957 ± 69 | 736 ± 25 | 195.16 ± 0.70 |
| [N II] 6585 | 40.84 ± 0.14 | 124 ± 62 | 51 ± 25 | 0.98 ± 0.16 |
| [S II] 6718 | 40.85 ± 0.12 | 124 ± 62 | 51 ± 25 | 1.00 ± 0.13 |
| [S II] 6732 | 40.81 ± 0.13 | 124 ± 62 | 51 ± 25 | 0.91 ± 0.17 |

Emission Summary

| | |
|------------------------------|-------|
| H α broad SNR | 24.59 |
| H β broad SNR | 7.93 |
| H γ broad SNR | 1.73 |
| AGN frac | 1.00 |
| Host frac | 0.00 |
| $\log L_{5100, \text{Host}}$ | 42.29 |
| Fe II/H β | 2.24 |
| Fe II/[O III] | 2.33 |

Quality Flags

| | |
|------------------|-----|
| spurious_hab/hbb | 0/0 |
| 15100 | 0 |
| balmer | 0 |
| balmer_snr | 1 |
| hb_width | 0 |
| balmer_width | 2 |