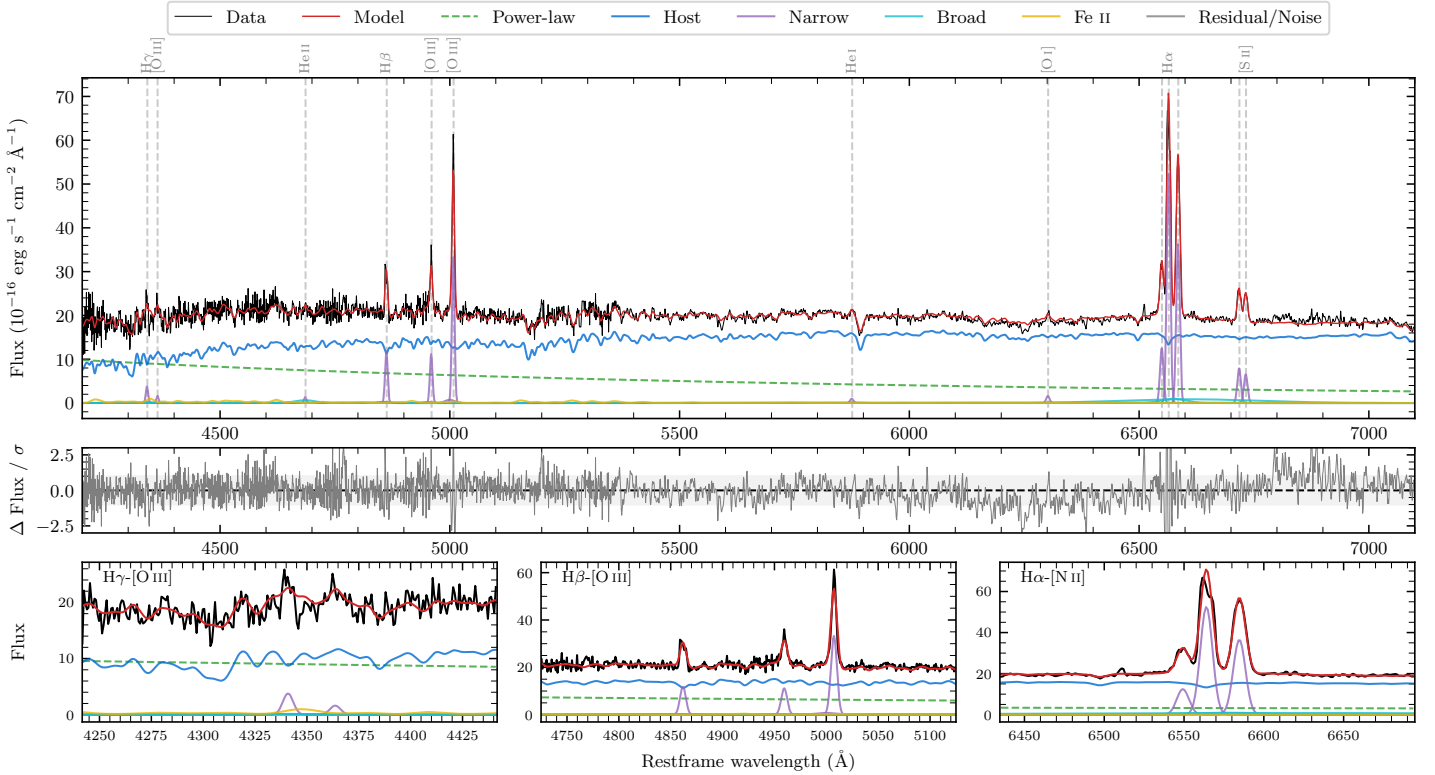
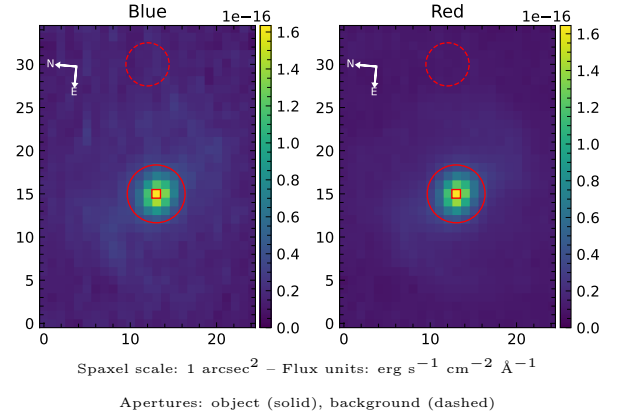


# ESO 421–9

Spectrum ID	19242182_sp1	Spectrum type	Sy 1.5+
Alt name	g0432173–302358	Quality flag	good
$z$	0.0548	AGN reference	6dFGS
RA, Dec	68.0722, –30.3993	MW $E(B - V)$	0.020
MJD	60266.57	Power law $\alpha_\nu$	$0.49 \pm 0.01$
SNR/ $\text{\AA}$ B/R	13.9/25.5	$\log L_{5100, \text{AGN}}$	$43.34 \pm 0.06$
Obs airmass	1.04	$\log H\beta_{\text{Br}}/[\text{O III}]$	$< -0.47$
SMSS ID	19242182	$\log M_{L5100}/M_\odot$	–
Neighbour	8.8", 2037570946	$\log M_{H\alpha}/M_\odot$	$7.60 \pm 0.22$
SMSS $\langle r_{6''}^{\text{ap}} \rangle$	$15.68 \pm 0.03$	$\log M_{H\beta}/M_\odot$	–
2MASS $K_{\text{ext}}$	$11.36 \pm 0.05$	$\log M_{[\text{O III}]} / M_\odot$	–



## Emission Line Measurements

Line	$\log L$ (erg s <sup>–1</sup> )	FWHM (km s <sup>–1</sup> )	$\sigma$ (km s <sup>–1</sup> )	EW (Å)
H $\gamma$ Narrow	$40.29 \pm 0.14$	$415 \pm 63$	$259 \pm 48$	$3.00 \pm 0.89$
<b>H<math>\gamma</math> Broad</b>	–	–	–	–
[O III] 4364	$39.89 \pm 0.27$	$413 \pm 62$	$174 \pm 25$	$1.21 \pm 0.50$
He II Narrow	$39.84 \pm 0.30$	$413 \pm 62$	$174 \pm 25$	$1.29 \pm 0.53$
<b>He II Broad</b>	<b><math>40.43 \pm 0.26</math></b>	<b><math>3284 \pm 62</math></b>	<b><math>1394 \pm 25</math></b>	<b><math>5.01 \pm 1.47</math></b>
H $\beta$ Narrow	$40.84 \pm 0.04$	$415 \pm 63$	$259 \pm 48$	$13.98 \pm 0.99$
<b>H<math>\beta</math> Broad</b>	$< 40.83$	–	–	–
[O III] 5007	$41.30 \pm 0.02$	$415 \pm 63$	$259 \pm 48$	$43.42 \pm 1.06$
He I Narrow	$39.82 \pm 0.21$	$413 \pm 62$	$174 \pm 25$	$2.14 \pm 0.52$
<b>He I Broad</b>	–	–	–	–
[O I] 6300	$40.04 \pm 0.11$	$413 \pm 62$	$174 \pm 25$	$4.30 \pm 0.59$
H $\alpha$ Narrow	$41.58 \pm 0.01$	$413 \pm 62$	$174 \pm 25$	$163.68 \pm 0.96$
<b>H<math>\alpha</math> Broad</b>	<b><math>41.47 \pm 0.04</math></b>	<b><math>5123 \pm 1227</math></b>	<b><math>4970 \pm 148</math></b>	<b><math>129.35 \pm 4.40</math></b>
[N II] 6585	$41.42 \pm 0.01$	$413 \pm 62$	$174 \pm 25$	$115.17 \pm 0.90$
[S II] 6718	$40.77 \pm 0.02$	$413 \pm 62$	$174 \pm 25$	$26.77 \pm 0.79$
[S II] 6732	$40.69 \pm 0.03$	$413 \pm 62$	$174 \pm 25$	$22.25 \pm 0.76$

## Emission Summary

H $\alpha$ broad SNR	1.26
H $\beta$ broad SNR	0.33
H $\gamma$ broad SNR	0.00
AGN frac	0.31
Host frac	0.69
$\log L_{5100, \text{Host}}$	43.68
Fe II/H $\beta$	–
Fe II/[O III]	0.42

## Quality Flags

spurious_hab/hbb	0/0
15100	2
balmer	2
balmer_snr	2
hb_width	2
balmer_width	2