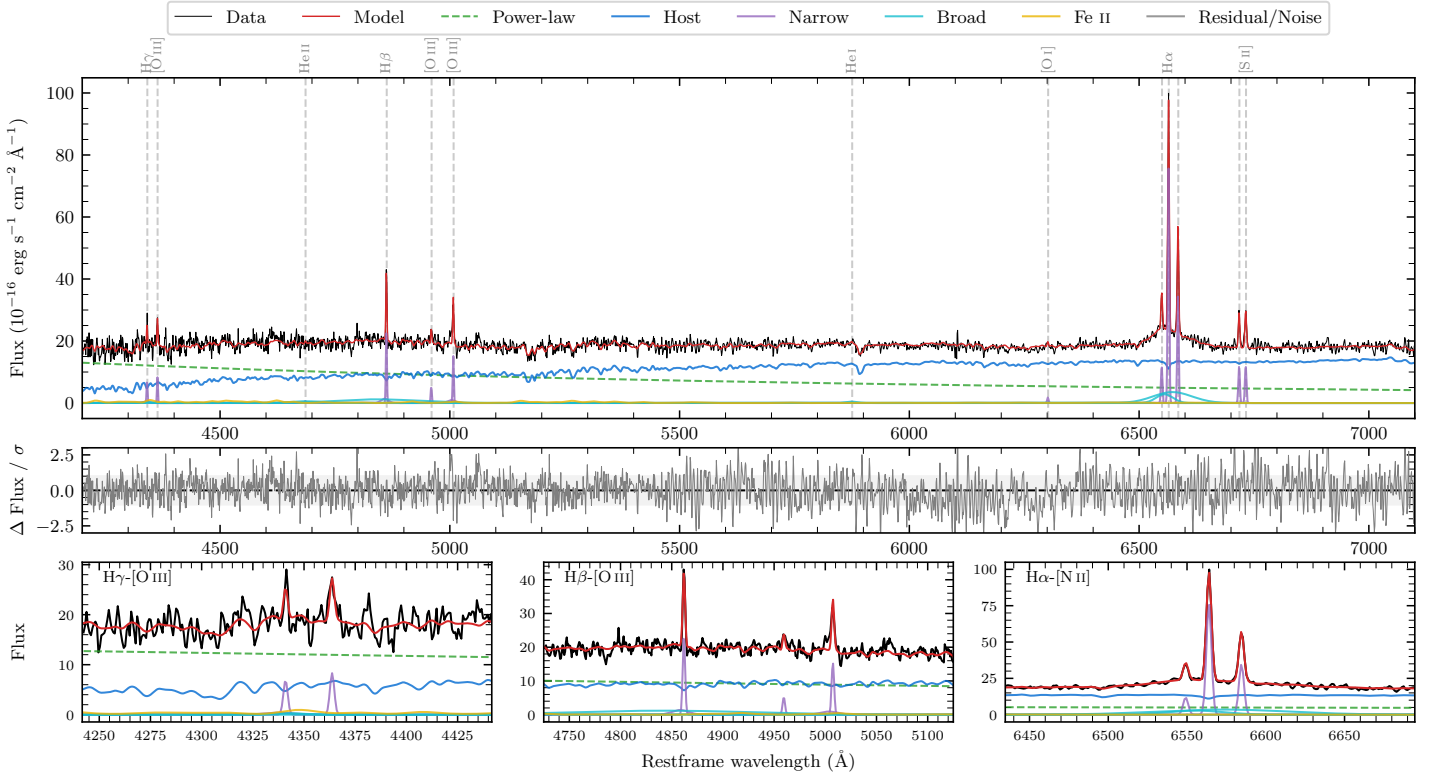
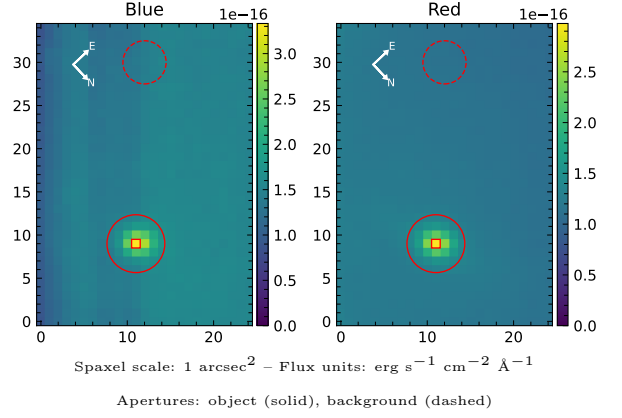


MCG-06-11-001

Spectrum ID	19189384_sp1	Spectrum type	Sy 1.5+
Alt name	g0432381-332450	Quality flag	good
z	0.0324	AGN reference	6dFGS
RA, Dec	68.1586, -33.4137	MW $E(B-V)$	0.017
MJD	59668.37	Power law α_ν	0.17 ± 0.17
SNR/ \AA B/R	11.4/21.8	$\log L_{5100, \text{AGN}}$	43.03 ± 0.03
Obs airmass	1.22	$\log H\beta_{\text{Br}}/[\text{O III}]$	< 0.10
SMSS ID	19189384	$\log M_{L5100}/M_\odot$	—
Neighbour	8.6", 2037480978	$\log M_{H\alpha}/M_\odot$	6.98 ± 0.07
SMSS $\langle r_{6''}^{\text{ap}} \rangle$	15.58 ± 0.04	$\log M_{H\beta}/M_\odot$	—
2MASS K_{ext}	11.11 ± 0.07	$\log M_{[\text{O III}]} / M_\odot$	—



Emission Line Measurements

Line	$\log L$ (erg s ⁻¹)	FWHM (km s ⁻¹)	σ (km s ⁻¹)	EW (Å)
H γ Narrow	39.82 ± 0.14	185 ± 63	292 ± 48	2.22 ± 0.74
Hγ Broad	—	—	—	—
[O III] 4364	39.75 ± 0.11	176 ± 62	74 ± 25	1.93 ± 0.29
He II Narrow	—	—	—	—
He II Broad	—	—	—	—
H β Narrow	40.39 ± 0.05	185 ± 63	292 ± 48	10.58 ± 0.72
Hβ Broad	< 40.33	—	—	—
[O III] 5007	40.23 ± 0.06	185 ± 63	292 ± 48	7.81 ± 0.73
He I Narrow	38.55 ± 0.44	176 ± 62	74 ± 25	0.23 ± 0.20
He I Broad	39.55 ± 0.21	1519 ± 63	645 ± 25	2.32 ± 0.62
[O I] 6300	39.24 ± 0.16	176 ± 62	74 ± 25	1.32 ± 0.30
H α Narrow	40.89 ± 0.01	176 ± 62	74 ± 25	64.65 ± 0.40
Hα Broad	41.11 ± 0.02	3238 ± 212	1441 ± 32	105.77 ± 1.90
[N II] 6585	40.55 ± 0.01	176 ± 62	74 ± 25	29.68 ± 0.39
[S II] 6718	40.09 ± 0.03	176 ± 62	74 ± 25	10.70 ± 0.41
[S II] 6732	40.10 ± 0.03	176 ± 62	74 ± 25	11.00 ± 0.42

Emission Summary

H α broad SNR	3.76
H β broad SNR	0.00
H γ broad SNR	0.00
AGN frac	0.49
Host frac	0.51
$\log L_{5100, \text{Host}}$	43.05
Fe II/H β	—
Fe II/[O III]	—

Quality Flags

spurious_hab/hbb	0/2
15100	1
balmer	2
balmer_snr	2
hb_width	2
balmer_width	2