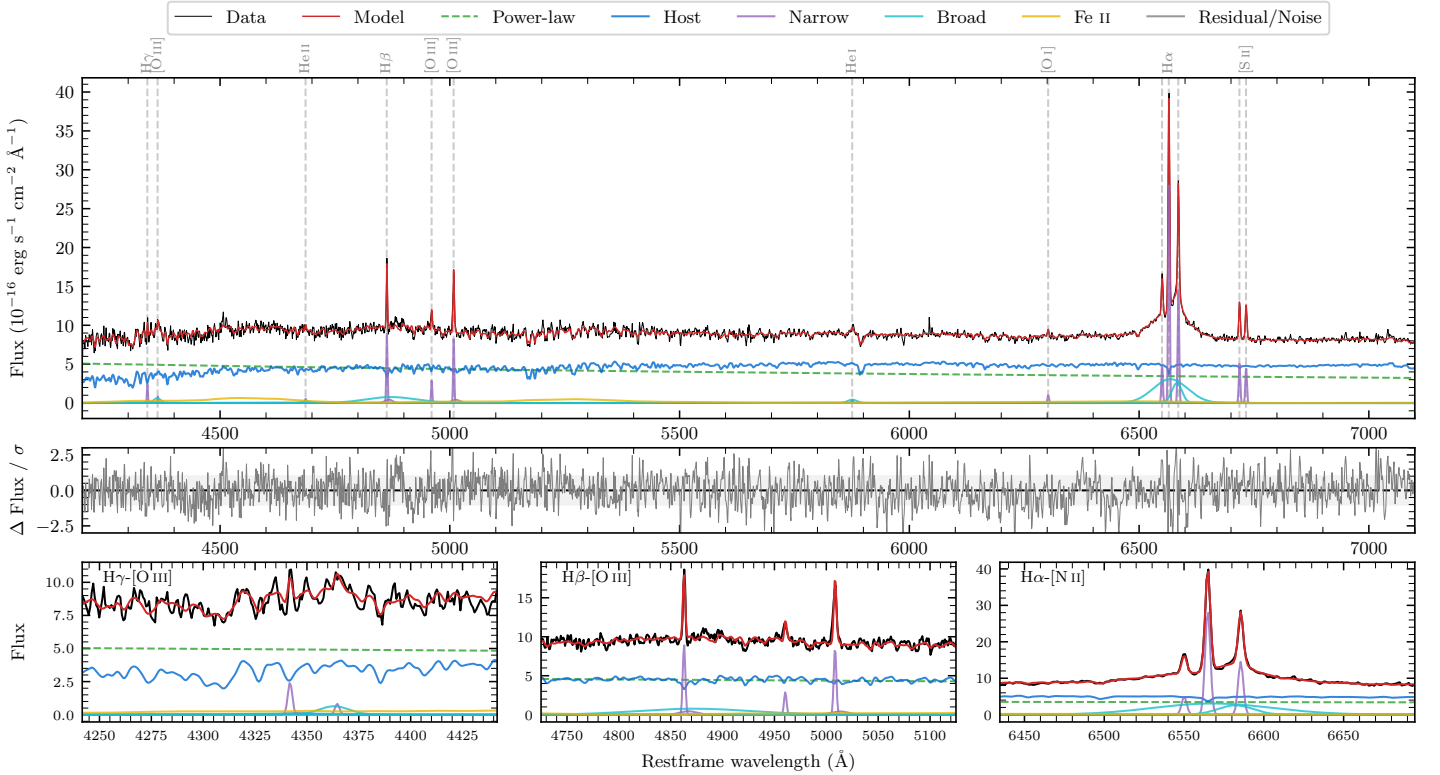
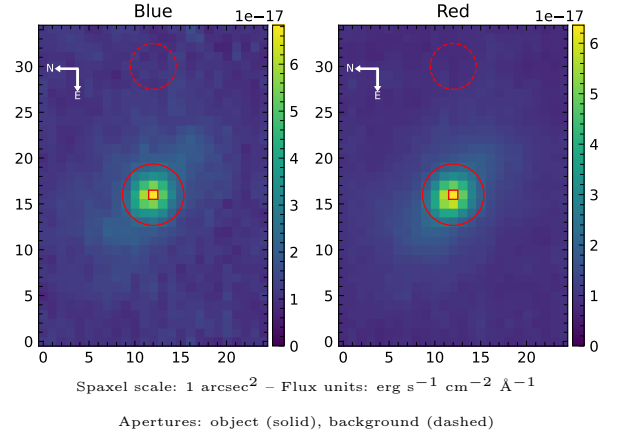


LEDA 131818

Spectrum ID	1909982_sp1	Spectrum type	Sy 1.2
Alt name	g2342053-391259	Quality flag	good
z	0.0429	AGN reference	6dFGS
RA, Dec	355.5220, -39.2162	MW $E(B - V)$	0.013
MJD	60223.55	Power law α_ν	-1.14 ± 0.13
SNR/ \AA B/R	20.2/34.5	$\log L_{5100, \text{AGN}}$	42.97 ± 0.01
Obs airmass	1.01	$\log H\beta_{\text{Br}}/[\text{O III}]$	0.48 ± 0.05
SMSS ID	1909982	$\log M_{L5100}/M_\odot$	8.24 ± 0.04
Neighbour	10.9", 2003573913	$\log M_{\text{H}\alpha}/M_\odot$	6.77 ± 0.05
SMSS $\langle r_{6'' \text{ap}} \rangle$	16.20 ± 0.03	$\log M_{\text{H}\beta}/M_\odot$	8.01 ± 0.06
2MASS K_{ext}	12.20 ± 0.10	$\log M_{[\text{O III}]} / M_\odot$	7.90 ± 0.07



Emission Line Measurements

Line	$\log L$ (erg s^{-1})	FWHM (km s^{-1})	σ (km s^{-1})	EW (\AA)
H γ Narrow	39.59 ± 0.10	191 ± 63	282 ± 37	1.86 ± 0.46
Hγ Broad	39.91 ± 0.14	1268 ± 105	869 ± 210	3.57 ± 0.79
[O III] 4364	39.00 ± 0.28	177 ± 62	75 ± 25	0.47 ± 0.17
He II Narrow	38.88 ± 0.31	177 ± 62	75 ± 25	0.38 ± 0.16
He II Broad	39.43 ± 0.26	1366 ± 66	580 ± 26	1.34 ± 0.56
H β Narrow	40.21 ± 0.03	191 ± 63	282 ± 37	8.48 ± 0.42
Hβ Broad	40.68 ± 0.04	7723 ± 250	2921 ± 29	24.95 ± 1.18
[O III] 5007	40.20 ± 0.03	191 ± 63	282 ± 37	8.54 ± 0.42
He I Narrow	38.81 ± 0.24	177 ± 62	75 ± 25	0.40 ± 0.12
He I Broad	39.69 ± 0.09	1179 ± 62	500 ± 25	2.97 ± 0.32
[O I] 6300	39.25 ± 0.08	177 ± 62	75 ± 25	1.15 ± 0.13
H α Narrow	40.72 ± 0.01	177 ± 62	75 ± 25	35.45 ± 0.18
Hα Broad	41.21 ± 0.01	2368 ± 116	1289 ± 25	108.60 ± 0.74
[N II] 6585	40.43 ± 0.01	177 ± 62	75 ± 25	18.06 ± 0.21
[S II] 6718	39.98 ± 0.02	177 ± 62	75 ± 25	6.52 ± 0.15
[S II] 6732	39.93 ± 0.02	177 ± 62	75 ± 25	5.89 ± 0.15

Emission Summary

H α broad SNR	12.05
H β broad SNR	1.82
H γ broad SNR	1.59
AGN frac	0.51
Host frac	0.49
$\log L_{5100, \text{Host}}$	42.95
Fe II/H β	1.41
Fe II/[O III]	4.23

Quality Flags

spurious_hab/hbb	0/0
15100	0
balmer	1
balmer_snr	2
hb_width	0
balmer_width	1