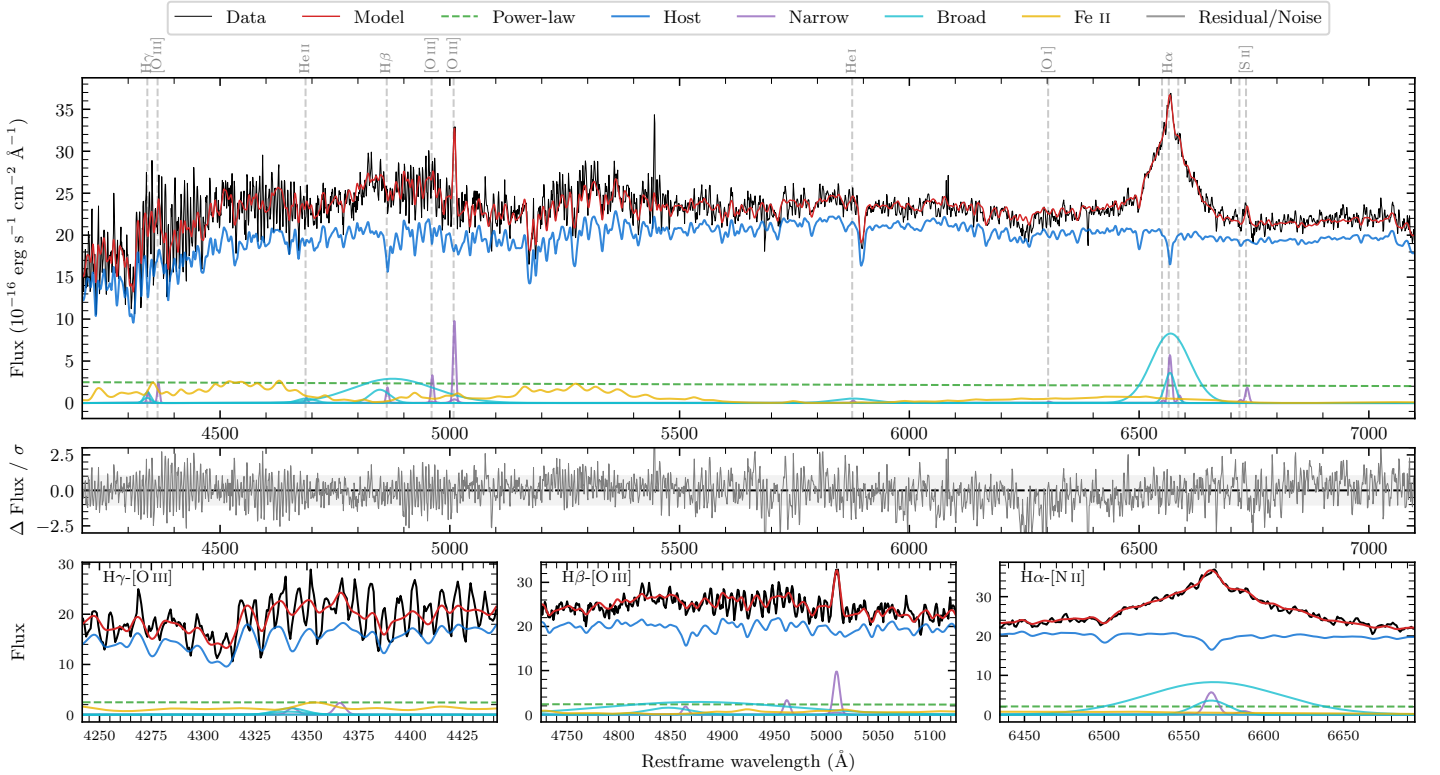
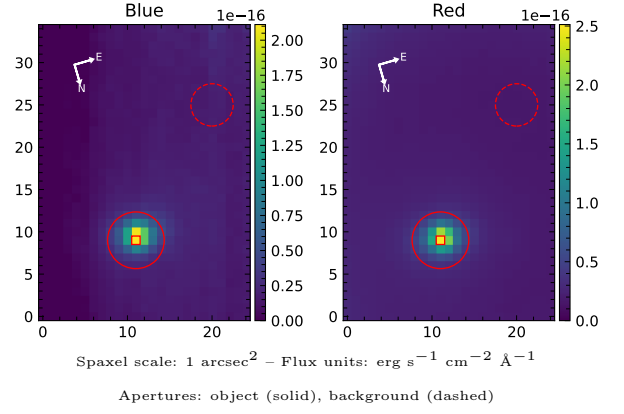


2MASX J05373307–4222299

Spectrum ID	18743823_sp2	Spectrum type	Sy 1.5+
Alt name	g0537331–422230	Quality flag	good
z	0.0363	AGN reference	6dFGS
RA, Dec	84.3879, –42.3749	MW $E(B - V)$	0.026
MJD	59995.5	Power law α_ν	-1.61 ± 0.19
SNR/ \AA B/R	13.9/31.4	$\log L_{5100, \text{AGN}}$	42.55 ± 0.07
Obs airmass	1.14	$\log H\beta_{\text{Br}}/[\text{O III}]$	< 0.16
SMSS ID	18743823	$\log M_{L5100}/M_\odot$	–
Neighbour	None $< 15''$	$\log M_{\text{H}\alpha}/M_\odot$	7.18 ± 0.06
SMSS $\langle r_6^{\text{ap}} \rangle$	15.50 ± 0.09	$\log M_{\text{H}\beta}/M_\odot$	–
2MASS K_{ext}	11.88 ± 0.07	$\log M_{[\text{O III}]} / M_\odot$	–



Emission Line Measurements

Line	$\log L$ (erg s^{-1})	FWHM (km s^{-1})	σ (km s^{-1})	EW (\AA)
H γ Narrow	39.50 ± 0.41	422 ± 64	215 ± 42	4.06 ± 3.38
Hγ Broad	–	–	–	–
[O III] 4364	39.66 ± 0.26	410 ± 63	173 ± 25	6.31 ± 2.34
He II Narrow	39.13 ± 0.46	410 ± 63	173 ± 25	1.88 ± 1.82
He II Broad	–	–	–	–
H β Narrow	39.67 ± 0.22	422 ± 64	215 ± 42	6.51 ± 2.75
Hβ Broad	< 40.57	–	–	–
[O III] 5007	40.40 ± 0.04	422 ± 64	215 ± 42	35.72 ± 2.76
He I Narrow	38.92 ± 0.44	410 ± 63	173 ± 25	1.29 ± 0.95
He I Broad	40.25 ± 0.11	5191 ± 62	2204 ± 25	27.49 ± 3.50
[O I] 6300	–	–	–	–
H α Narrow	40.23 ± 0.05	410 ± 63	173 ± 25	27.13 ± 1.10
Hα Broad	41.48 ± 0.01	3124 ± 201	1515 ± 25	480.05 ± 3.67
[N II] 6585	39.43 ± 0.20	410 ± 63	173 ± 25	4.31 ± 1.07
[S II] 6718	39.06 ± 0.34	410 ± 63	173 ± 25	1.86 ± 1.02
[S II] 6732	39.75 ± 0.09	410 ± 63	173 ± 25	9.05 ± 1.07

Emission Summary

H α broad SNR	7.23
H β broad SNR	0.97
H γ broad SNR	0.00
AGN frac	0.11
Host frac	0.89
$\log L_{5100, \text{Host}}$	43.47
Fe II/H β	–
Fe II/[O III]	–

Quality Flags

spurious_hab/hbb	0/2
15100	2
balmer	2
balmer_snr	2
hb_width	2
balmer_width	2