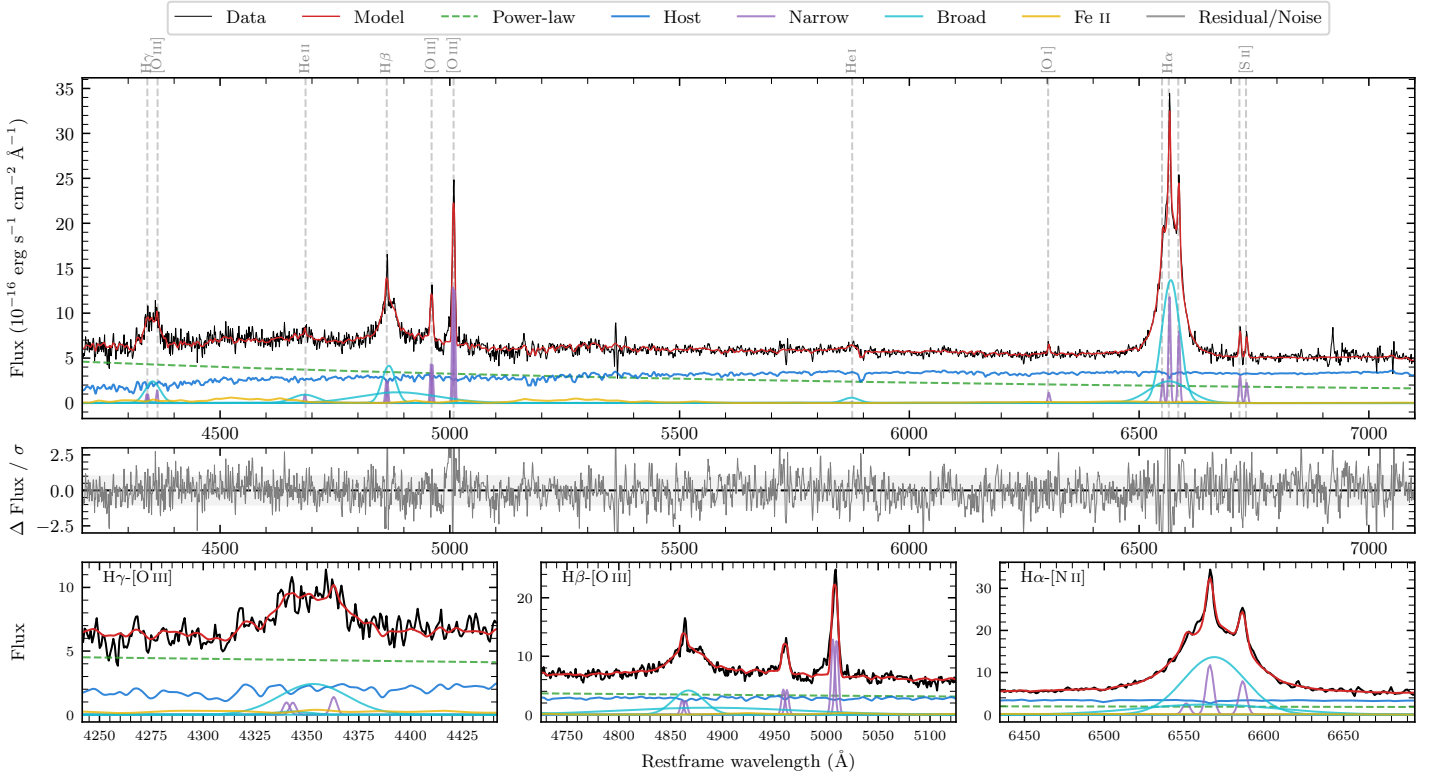
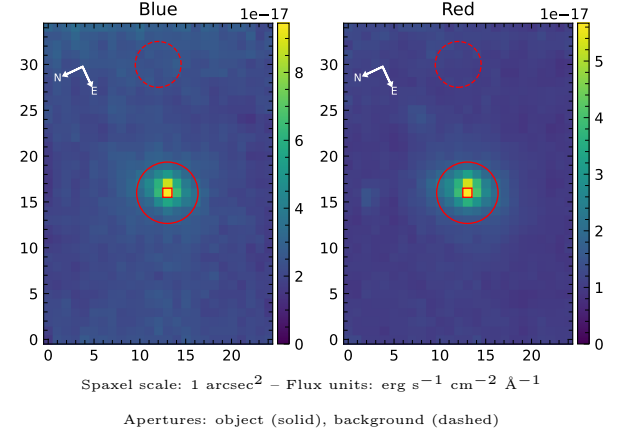


2MASS J05371866–4443048

Spectrum ID	18683722_sp1	Spectrum type	Sy 1.2
Alt name	g0537187–444305	Quality flag	good
z	0.0997	AGN reference	6dFGS
RA, Dec	84.3277, –44.7180	MW $E(B - V)$	0.029
MJD	60263.66	Power law α_ν	-0.03 ± 0.20
SNR/Å B/R	11.7/17.8	$\log L_{5100, \text{AGN}}$	43.60 ± 0.04
Obs airmass	1.03	$\log H\beta_{\text{Br}}/[\text{O III}]$	0.56 ± 0.02
SMSS ID	18683722	$\log M_{L5100}/M_\odot$	7.56 ± 0.03
Neighbour	9.3", 2036772918	$\log M_{\text{H}\alpha}/M_\odot$	7.46 ± 0.03
SMSS $\langle r_6''_{\text{ap}} \rangle$	16.77 ± 0.09	$\log M_{\text{H}\beta}/M_\odot$	7.68 ± 0.03
2MASS K_{ext}	13.19 ± 0.12	$\log M_{[\text{O III}]} / M_\odot$	7.58 ± 0.03



Emission Line Measurements

Line	$\log L$ (erg s ⁻¹)	FWHM (km s ⁻¹)	σ (km s ⁻¹)	EW (Å)
H γ Narrow	40.32 ± 0.18	423 ± 63	149 ± 25	1.92 ± 0.37
Hγ Broad	41.46 ± 0.04	2632 ± 107	906 ± 31	26.70 ± 1.17
[O III] 4364	40.17 ± 0.19	253 ± 63	107 ± 25	1.40 ± 0.35
He II Narrow	40.04 ± 0.21	253 ± 63	107 ± 25	1.18 ± 0.34
He II Broad	41.25 ± 0.06	4119 ± 92	1749 ± 38	18.86 ± 1.45
H β Narrow	40.76 ± 0.06	423 ± 63	149 ± 25	6.69 ± 0.44
Hβ Broad	42.05 ± 0.02	2576 ± 80	2866 ± 70	131.52 ± 2.87
[O III] 5007	41.50 ± 0.01	423 ± 63	149 ± 25	38.56 ± 0.51
He I Narrow	–	–	–	–
He I Broad	40.85 ± 0.06	2100 ± 81	892 ± 33	11.91 ± 0.95
[O I] 6300	40.25 ± 0.07	253 ± 63	107 ± 25	3.46 ± 0.36
H α Narrow	41.28 ± 0.01	253 ± 63	107 ± 25	40.07 ± 0.55
Hα Broad	42.41 ± 0.01	2265 ± 65	959 ± 25	534.43 ± 2.10
[N II] 6585	41.11 ± 0.02	253 ± 63	107 ± 25	27.20 ± 0.71
[S II] 6718	40.69 ± 0.03	253 ± 63	107 ± 25	10.88 ± 0.44
[S II] 6732	40.58 ± 0.05	253 ± 63	107 ± 25	8.33 ± 0.50

Emission Summary

H α broad SNR	27.92
H β broad SNR	9.22
H γ broad SNR	4.56
AGN frac	0.54
Host frac	0.46
$\log L_{5100, \text{Host}}$	43.54
Fe II/H β	0.30
Fe II/[O III]	1.08

Quality Flags

spurious_hab/hbb	0/0
15100	0
balmer	0
balmer_snr	0
hb_width	2
balmer_width	0