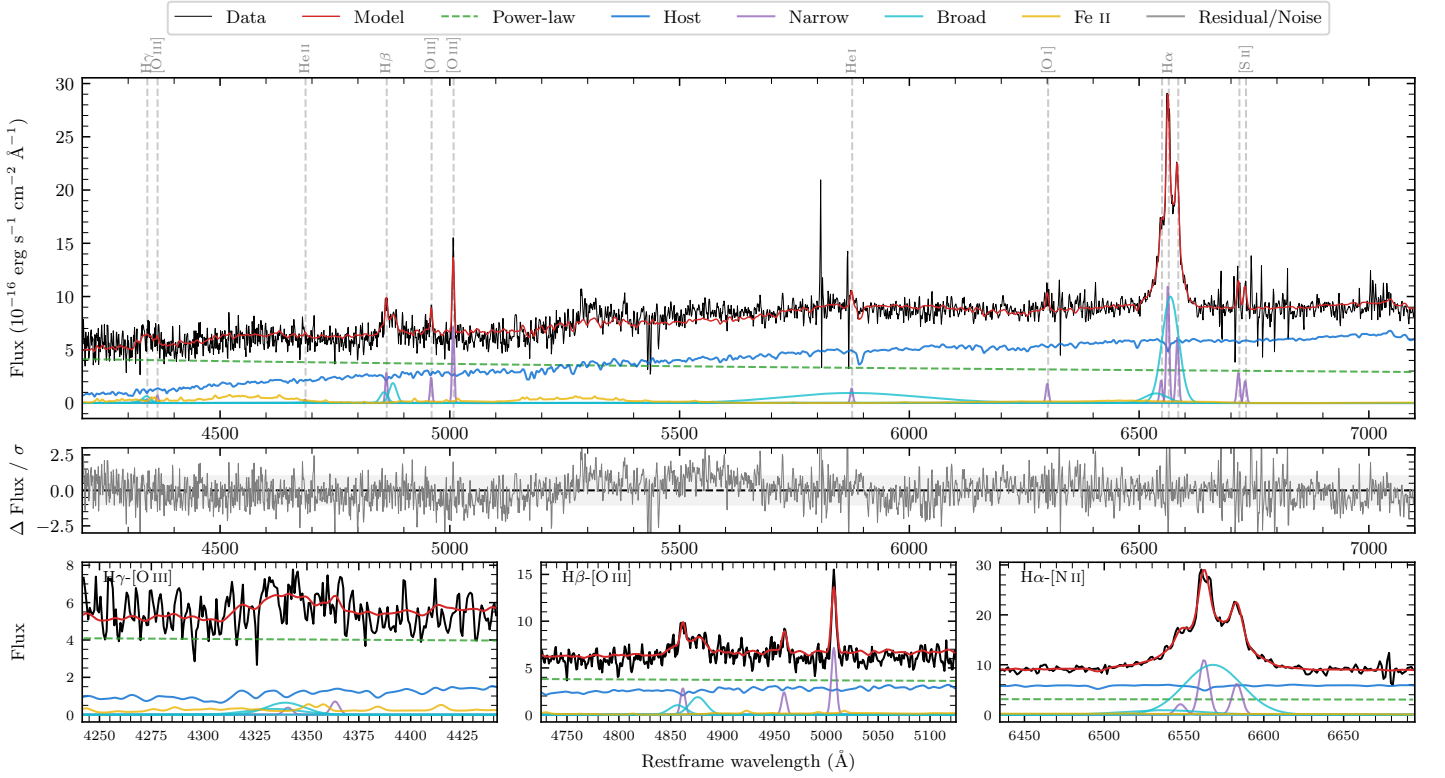
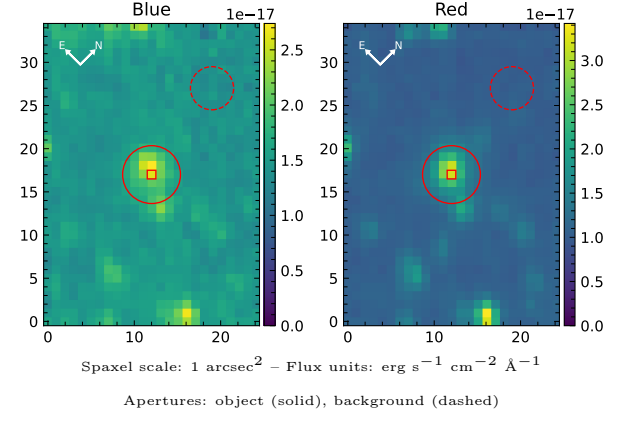


2MASS J17224354–1738455

Spectrum ID	185609646_sp1	Spectrum type	Sy 1.5
Alt name	c1722435–173846	Quality flag	good
z	0.0847	AGN reference	6dFGS
RA, Dec	260.6812, –17.6461	MW $E(B - V)$	0.302
MJD	60162.44	Power law α_ν	-1.34 ± 0.23
SNR/Å B/R	7.7/11.7	$\log L_{5100, \text{AGN}}$	43.52 ± 0.03
Obs airmass	1.03	$\log H\beta_{\text{Br}}/[\text{O III}]$	0.13 ± 0.07
SMSS ID	185609646	$\log M_{L5100}/M_\odot$	7.29 ± 0.13
Neighbour	4.7", 185609645	$\log M_{\text{H}\alpha}/M_\odot$	7.11 ± 0.03
SMSS $\langle r_{6''}^{\text{ap}} \rangle$	17.49 ± 0.05	$\log M_{\text{H}\beta}/M_\odot$	7.00 ± 0.14
2MASS K_{ext}	12.89 ± 0.14	$\log M_{[\text{O III}]} / M_\odot$	7.07 ± 0.13



Emission Line Measurements

Line	$\log L$ (erg s ⁻¹)	FWHM (km s ⁻¹)	σ (km s ⁻¹)	EW (Å)
H γ Narrow	–	–	–	–
Hγ Broad	40.73 ± 0.13	1702 ± 199	639 ± 77	6.77 ± 1.29
[O III] 4364	39.85 ± 0.32	336 ± 63	141 ± 25	0.99 ± 0.49
He II Narrow	39.56 ± 0.43	336 ± 63	141 ± 25	0.53 ± 0.46
He II Broad	–	–	–	–
H β Narrow	40.52 ± 0.10	335 ± 63	159 ± 31	4.84 ± 0.84
Hβ Broad	41.06 ± 0.06	1978 ± 302	697 ± 31	17.13 ± 1.10
[O III] 5007	40.93 ± 0.03	335 ± 63	159 ± 31	12.79 ± 0.94
He I Narrow	40.27 ± 0.14	336 ± 63	141 ± 25	3.16 ± 0.72
He I Broad	41.83 ± 0.04	17661 ± 62	7500 ± 25	114.55 ± 4.96
[O I] 6300	40.41 ± 0.13	336 ± 63	141 ± 25	4.60 ± 0.71
H α Narrow	41.22 ± 0.03	336 ± 63	141 ± 25	30.19 ± 0.82
Hα Broad	41.99 ± 0.01	2011 ± 69	789 ± 31	178.56 ± 2.07
[N II] 6585	40.97 ± 0.04	336 ± 63	141 ± 25	17.08 ± 0.79
[S II] 6718	40.64 ± 0.08	336 ± 63	141 ± 25	8.05 ± 0.95
[S II] 6732	40.50 ± 0.09	336 ± 63	141 ± 25	5.90 ± 0.85

Emission Summary

H α broad SNR	11.43
H β broad SNR	2.14
H γ broad SNR	1.12
AGN frac	0.56
Host frac	0.44
$\log L_{5100, \text{Host}}$	43.41
Fe II/H β	2.50
Fe II/[O III]	3.42

Quality Flags

spurious_hab/hbb	0/0
15100	0
balmer	1
balmer_snr	1
hb_width	0
balmer_width	1