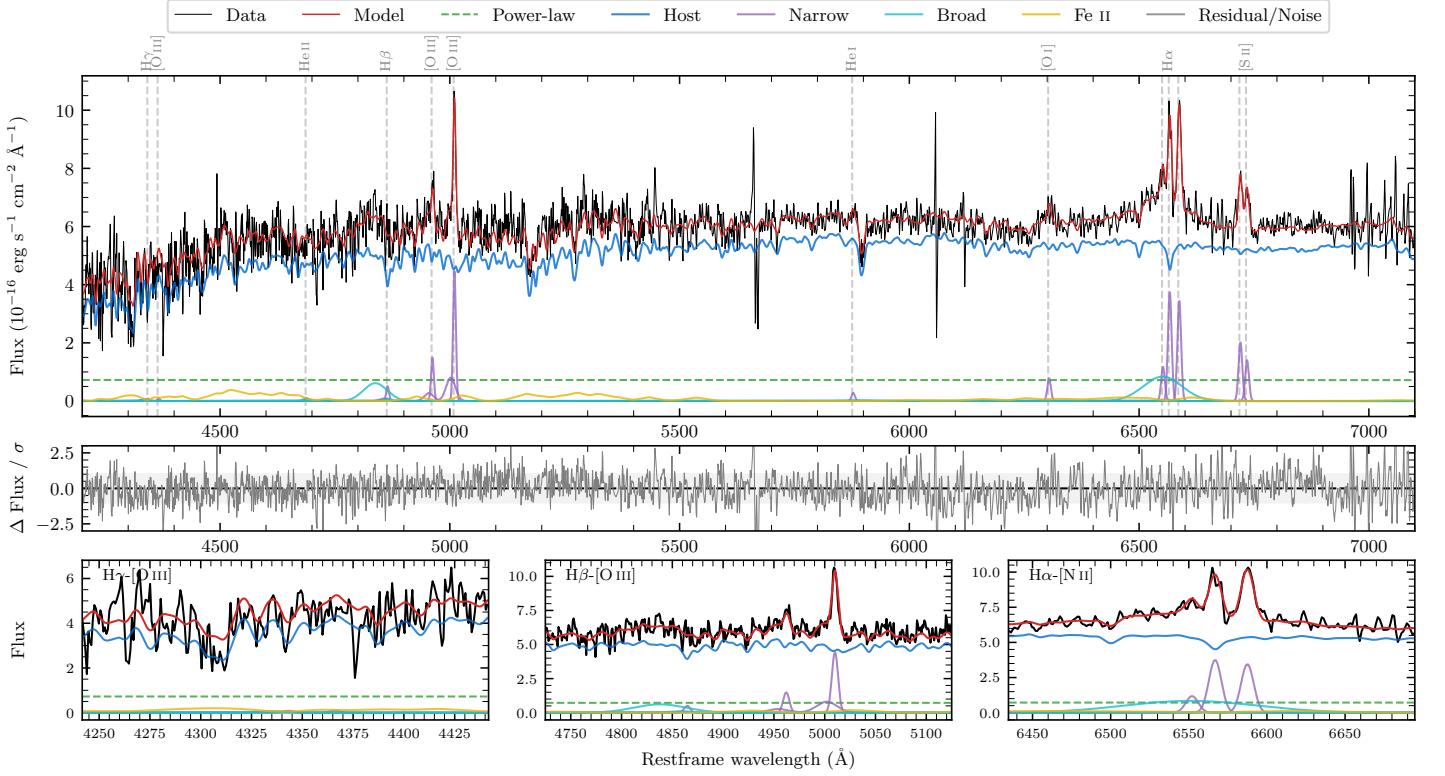
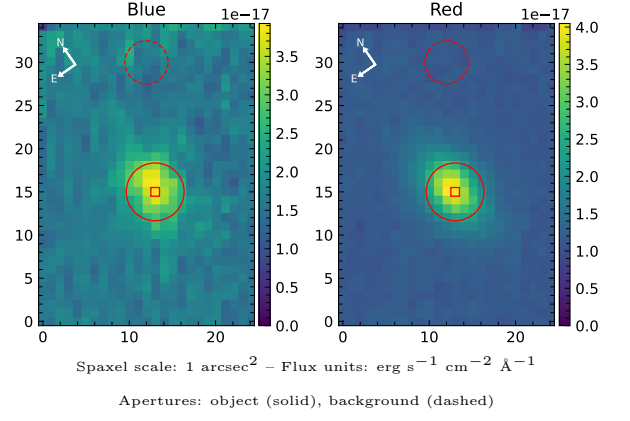


6dFGS gJ044045.9–372906

Spectrum ID	18479272_sp1	Spectrum type	Sy 1.5
Alt name	g0440459–372906	Quality flag	good
z	0.0405	AGN reference	6dFGS
RA, Dec	70.1911, –37.4850	MW $E(B - V)$	0.013
MJD	60580.75	Power law α_ν	-1.98 ± 0.02
SNR/ \AA B/R	9.4/20.8	$\log L_{5100, \text{AGN}}$	42.14 ± 0.08
Obs airmass	1.01	$\log H\beta_{\text{Br}}/[\text{O III}]$	-0.11 ± 0.09
SMSS ID	18479272	$\log M_{L5100}/M_\odot$	7.28 ± 0.06
Neighbour	9.8", 18479273	$\log M_{H\alpha}/M_\odot$	6.91 ± 0.07
SMSS $\langle r_6^{\text{ap}} \rangle$	16.23 ± 0.03	$\log M_{H\beta}/M_\odot$	7.21 ± 0.08
2MASS K_{ext}	12.83 ± 0.12	$\log M_{[\text{O III}]} / M_\odot$	7.36 ± 0.07



Emission Line Measurements

Line	$\log L$ (erg s $^{-1}$)	FWHM (km s $^{-1}$)	σ (km s $^{-1}$)	EW (Angstrom)
H γ Narrow	–	–	–	–
Hγ Broad	–	–	–	–
[O III] 4364	–	–	–	–
He II Narrow	–	–	–	–
He II Broad	–	–	–	–
H β Narrow	39.37 ± 0.25	470 ± 64	459 ± 41	8.72 ± 3.60
Hβ Broad	40.22 ± 0.08	3880 ± 148	1243 ± 25	59.18 ± 6.34
[O III] 5007	40.33 ± 0.04	470 ± 64	459 ± 41	78.08 ± 3.98
He I Narrow	38.99 ± 0.26	431 ± 62	182 ± 25	3.64 ± 1.25
He I Broad	–	–	–	–
[O I] 6300	39.47 ± 0.11	431 ± 62	182 ± 25	10.86 ± 1.40
H α Narrow	40.17 ± 0.03	431 ± 62	182 ± 25	54.38 ± 1.53
Hα Broad	40.55 ± 0.03	4415 ± 124	1640 ± 25	129.80 ± 4.43
[N II] 6585	40.13 ± 0.02	431 ± 62	182 ± 25	50.15 ± 1.69
[S II] 6718	39.91 ± 0.03	431 ± 62	182 ± 25	29.90 ± 1.35
[S II] 6732	39.75 ± 0.05	431 ± 62	182 ± 25	20.80 ± 1.28

Emission Summary

H α broad SNR	1.49
H β broad SNR	1.09
H γ broad SNR	0.00
AGN frac	0.13
Host frac	0.87
$\log L_{5100, \text{Host}}$	42.97
Fe II/H β	1.66
Fe II/[O III]	1.26

Quality Flags

spurious_hab/hbb	0/0
15100	2
balmer	1
balmer_snr	2
hb_width	0
balmer_width	2