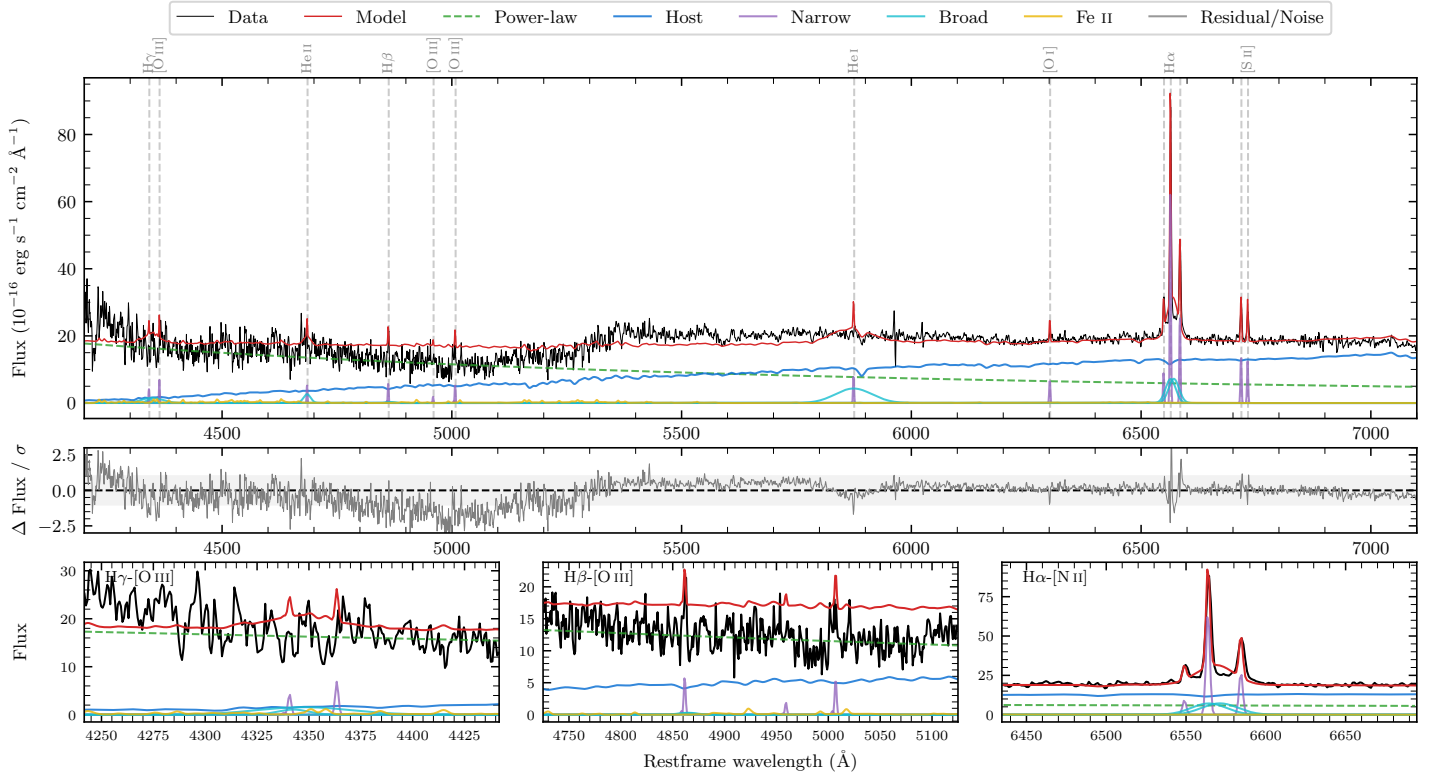
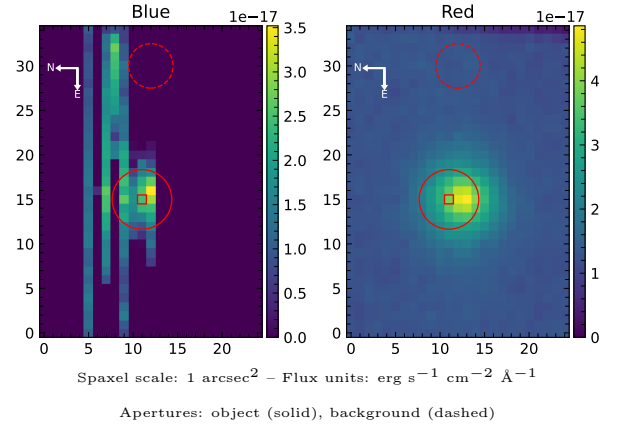


LEDA 15898

Spectrum ID	18467702_sp1	Spectrum type	Bad
Alt name	g0443551-392608	Quality flag	bad_blue
z	0.0568	AGN reference	6dFGS
RA, Dec	70.9796, -39.4357	MW $E(B-V)$	0.022
MJD	60254.68	Power law α_ν	0.48 ± 0.02
SNR/ \AA B/R	4.3/4.5	$\log L_{5100, \text{AGN}}$	43.63 ± 0.01
Obs airmass	1.02	$\log H\beta_{\text{Br}}/[\text{O III}]$	—
SMSS ID	18467702	$\log M_{L5100}/M_\odot$	—
Neighbour	None $< 15''$	$\log M_{\text{H}\alpha}/M_\odot$	6.40 ± 0.06
SMSS $\langle r_6'' \text{ap} \rangle$	16.55 ± 0.07	$\log M_{\text{H}\beta}/M_\odot$	—
2MASS K_{ext}	12.76 ± 0.12	$\log M_{[\text{O III}]} / M_\odot$	—



Emission Line Measurements

Line	$\log L$ (erg s ⁻¹)	FWHM (km s ⁻¹)	σ (km s ⁻¹)	EW (Å)
H γ Narrow	39.91 ± 0.38	138 ± 63	79 ± 32	0.60 ± 0.41
Hγ Broad	—	—	—	—
[O III] 4364	40.04 ± 0.27	135 ± 63	54 ± 25	0.89 ± 0.34
He II Narrow	39.99 ± 0.29	135 ± 63	54 ± 25	0.93 ± 0.36
He II Broad	40.62 ± 0.22	1184 ± 63	503 ± 25	4.05 ± 1.13
H β Narrow	40.11 ± 0.25	138 ± 63	79 ± 32	1.24 ± 0.44
Hβ Broad	—	—	—	—
[O III] 5007	40.10 ± 0.26	138 ± 63	79 ± 32	1.32 ± 0.45
He I Narrow	40.25 ± 0.27	135 ± 63	54 ± 25	2.99 ± 1.00
He I Broad	41.54 ± 0.08	4793 ± 63	2035 ± 25	59.16 ± 6.37
[O I] 6300	40.22 ± 0.21	135 ± 63	54 ± 25	3.32 ± 1.02
H α Narrow	41.21 ± 0.04	135 ± 63	54 ± 25	35.35 ± 1.52
Hα Broad	41.51 ± 0.05	1251 ± 64	470 ± 25	72.37 ± 4.42
[N II] 6585	40.82 ± 0.08	135 ± 63	54 ± 25	14.61 ± 1.47
[S II] 6718	40.54 ± 0.12	135 ± 63	54 ± 25	8.16 ± 1.28
[S II] 6732	40.49 ± 0.13	135 ± 63	54 ± 25	7.21 ± 1.32

Emission Summary

H α broad SNR	3.03
H β broad SNR	0.00
H γ broad SNR	0.00
AGN frac	0.66
Host frac	0.34
$\log L_{5100, \text{Host}}$	43.34
Fe II/H β	—
Fe II/[O III]	8.49

Quality Flags

spurious_hab/hbb	0/0
15100	2
balmer	2
balmer_snr	2
hb_width	2
balmer_width	2