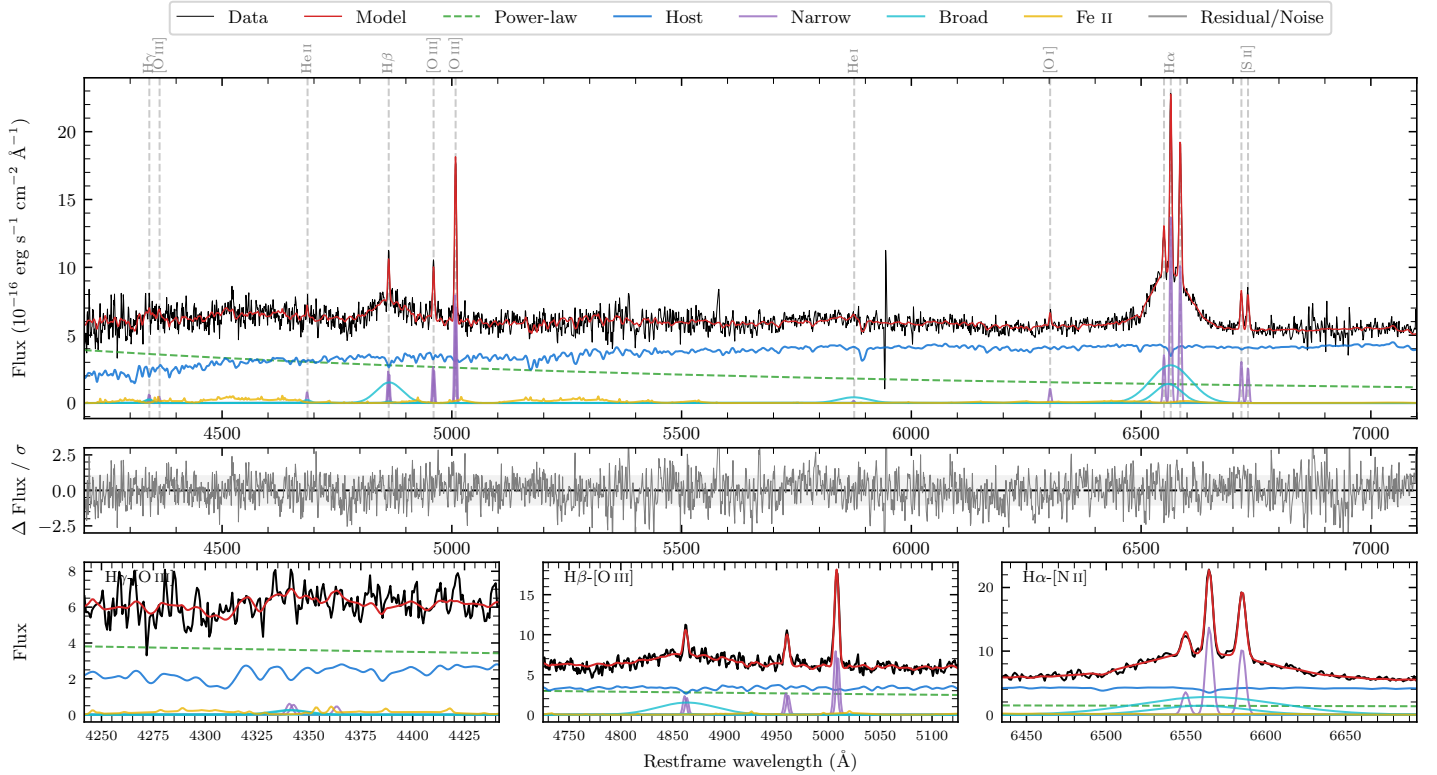
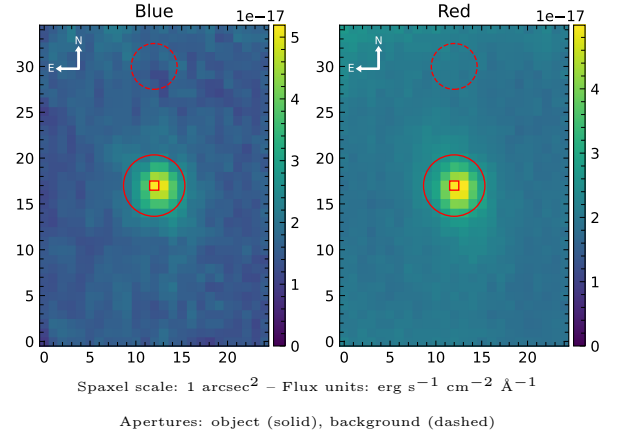


ESO 360-17

Spectrum ID	18460747_sp1	Spectrum type	Sy 1.5
Alt name	g0435577-355858	Quality flag	good
z	0.0605	AGN reference	6dFGS
RA, Dec	68.9905, -35.9827	MW $E(B-V)$	0.015
MJD	60296.57	Power law α_ν	0.31 ± 0.15
SNR/ \AA B/R	10.8/16.6	$\log L_{5100, \text{AGN}}$	43.05 ± 0.03
Obs airmass	1.02	$\log H\beta_{\text{Br}}/[\text{O III}]$	0.23 ± 0.03
SMSS ID	18460747	$\log M_{L5100}/M_\odot$	7.66 ± 0.06
Neighbour	13.0", 18460746	$\log M_{\text{H}\alpha}/M_\odot$	7.45 ± 0.03
SMSS $\langle r_6''_{\text{ap}} \rangle$	16.19 ± 0.06	$\log M_{\text{H}\beta}/M_\odot$	7.56 ± 0.07
2MASS K_{ext}	12.43 ± 0.13	$\log M_{[\text{O III}]} / M_\odot$	7.57 ± 0.06



Emission Line Measurements

Line	$\log L$ (erg s $^{-1}$)	FWHM (km s $^{-1}$)	σ (km s $^{-1}$)	EW (Å)
H γ Narrow	39.60 ± 0.27	303 ± 63	122 ± 25	1.27 ± 0.39
Hγ Broad	40.10 ± 0.20	1350 ± 121	488 ± 41	3.10 ± 0.93
[O III] 4364	39.21 ± 0.39	244 ± 63	102 ± 25	0.52 ± 0.37
He II Narrow	39.47 ± 0.26	244 ± 63	102 ± 25	1.12 ± 0.38
He II Broad	39.64 ± 0.36	1218 ± 69	517 ± 28	1.58 ± 0.85
H β Narrow	40.23 ± 0.05	303 ± 63	122 ± 25	6.98 ± 0.47
Hβ Broad	41.01 ± 0.03	3848 ± 228	1487 ± 35	41.57 ± 1.68
[O III] 5007	40.78 ± 0.01	303 ± 63	122 ± 25	26.39 ± 0.47
He I Narrow	38.91 ± 0.43	244 ± 63	102 ± 25	0.52 ± 0.43
He I Broad	40.51 ± 0.07	3948 ± 66	1676 ± 27	20.54 ± 2.04
[O I] 6300	39.73 ± 0.08	244 ± 63	102 ± 25	4.00 ± 0.47
H α Narrow	40.85 ± 0.01	244 ± 63	102 ± 25	58.38 ± 0.73
Hα Broad	41.57 ± 0.01	4024 ± 121	1572 ± 35	307.95 ± 2.89
[N II] 6585	40.73 ± 0.01	244 ± 63	102 ± 25	44.54 ± 0.69
[S II] 6718	40.20 ± 0.03	244 ± 63	102 ± 25	13.90 ± 0.68
[S II] 6732	40.14 ± 0.04	244 ± 63	102 ± 25	12.00 ± 0.69

Emission Summary

H α broad SNR	7.12
H β broad SNR	2.86
H γ broad SNR	1.10
AGN frac	0.43
Host frac	0.56
$\log L_{5100, \text{Host}}$	43.16
Fe II/H β	0.72
Fe II/[O III]	1.21

Quality Flags

spurious_hab/hbb	0/0
15100	1
balmer	1
balmer_snr	1
hb_width	0
balmer_width	1