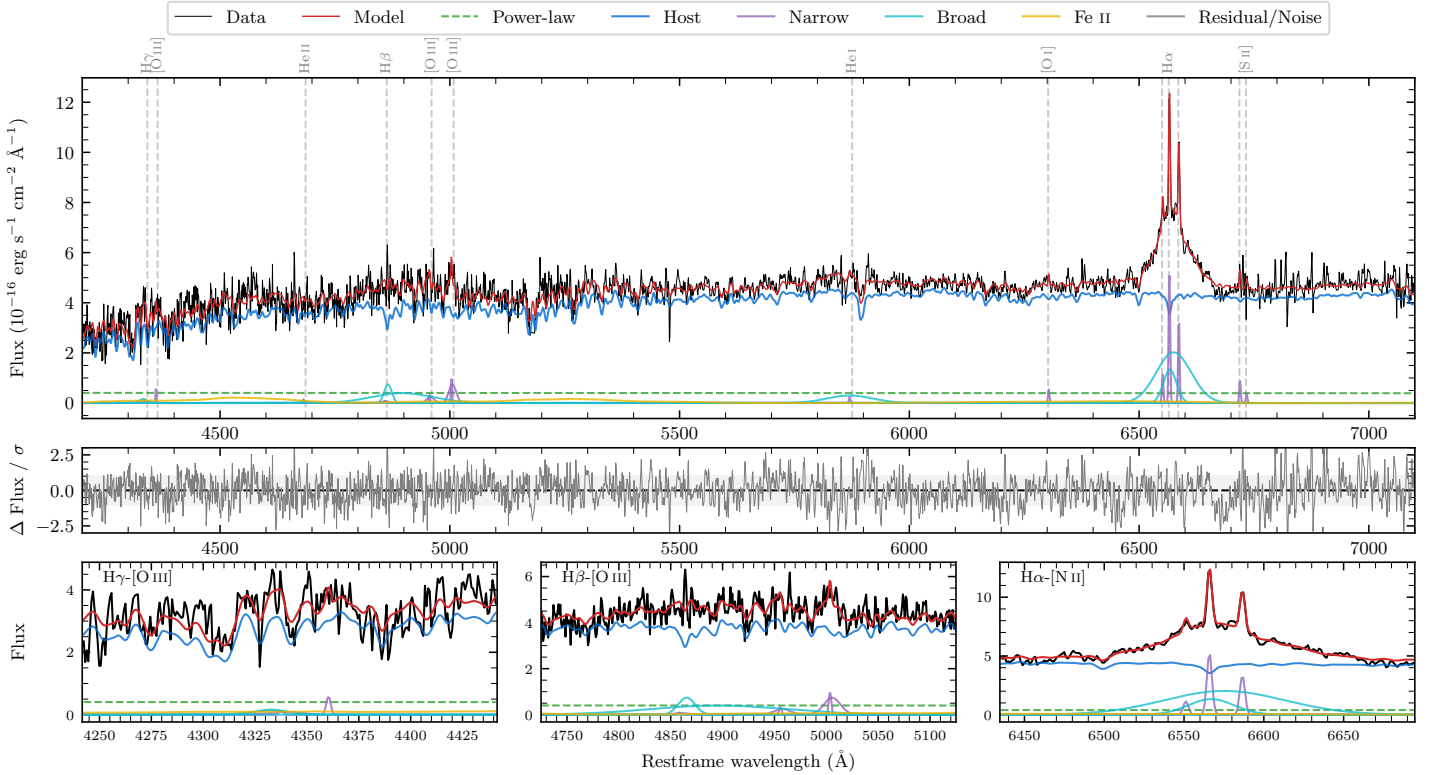
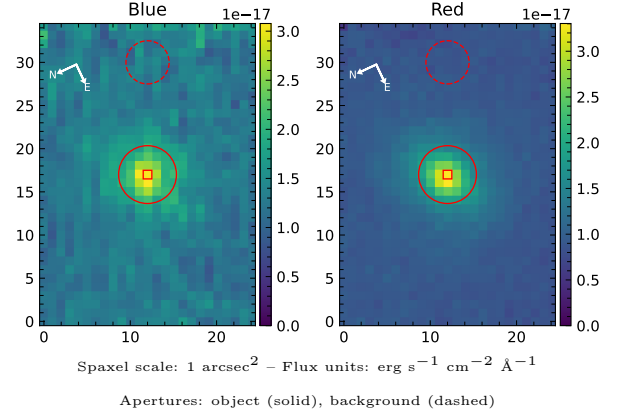


LEDA 132254

Spectrum ID	18439522_sp1	Spectrum type	Sy 1.2
Alt name	g0430108-364206	Quality flag	good
z	0.0760	AGN reference	6dFGS
RA, Dec	67.5449, -36.7018	MW $E(B - V)$	0.018
MJD	60581.75	Power law α_ν	-1.93 ± 0.08
SNR/ \AA B/R	9.5/20.1	$\log L_{5100, \text{AGN}}$	42.47 ± 0.15
Obs airmass	1.00	$\log H\beta_{\text{Br}}/[\text{O III}]$	0.66 ± 0.09
SMSS ID	18439522	$\log M_{L5100}/M_\odot$	6.68 ± 0.13
Neighbour	None $< 15''$	$\log M_{\text{H}\alpha}/M_\odot$	7.12 ± 0.04
SMSS $\langle r_6'' \text{ap} \rangle$	16.76 ± 0.10	$\log M_{\text{H}\beta}/M_\odot$	6.86 ± 0.12
2MASS K_{ext}	12.76 ± 0.14	$\log M_{[\text{O III}]} / M_\odot$	6.67 ± 0.13



Emission Line Measurements

Line	$\log L$ (erg s ⁻¹)	FWHM (km s ⁻¹)	σ (km s ⁻¹)	EW (Å)
H γ Narrow	—	—	—	—
Hγ Broad	—	—	—	—
[O III] 4364	39.38 ± 0.33	183 ± 63	73 ± 25	4.16 ± 2.00
He II Narrow	—	—	—	—
He II Broad	—	—	—	—
H β Narrow	—	—	—	—
Hβ Broad	41.09 ± 0.06	1648 ± 205	2902 ± 87	216.44 ± 14.92
[O III] 5007	40.44 ± 0.07	308 ± 89	438 ± 27	47.62 ± 4.99
He I Narrow	39.16 ± 0.28	183 ± 63	73 ± 25	2.55 ± 1.12
He I Broad	40.76 ± 0.06	5942 ± 63	2523 ± 25	101.04 ± 7.44
[O I] 6300	39.52 ± 0.13	183 ± 63	73 ± 25	5.80 ± 1.07
H α Narrow	40.52 ± 0.02	183 ± 63	73 ± 25	57.80 ± 1.66
Hα Broad	41.57 ± 0.01	2733 ± 123	1284 ± 25	656.44 ± 6.65
[N II] 6585	40.32 ± 0.03	183 ± 63	73 ± 25	36.90 ± 1.29
[S II] 6718	39.76 ± 0.09	183 ± 63	73 ± 25	10.15 ± 1.39
[S II] 6732	39.38 ± 0.25	183 ± 63	73 ± 25	4.20 ± 1.96

Emission Summary

H α broad SNR	7.77
H β broad SNR	2.59
H γ broad SNR	0.90
AGN frac	0.10
Host frac	0.90
$\log L_{5100, \text{Host}}$	43.43
Fe II/H β	0.63
Fe II/[O III]	2.87

Quality Flags

spurious_hab/hbb	0/0
15100	2
balmer	1
balmer_snr	2
hb_width	2
balmer_width	2