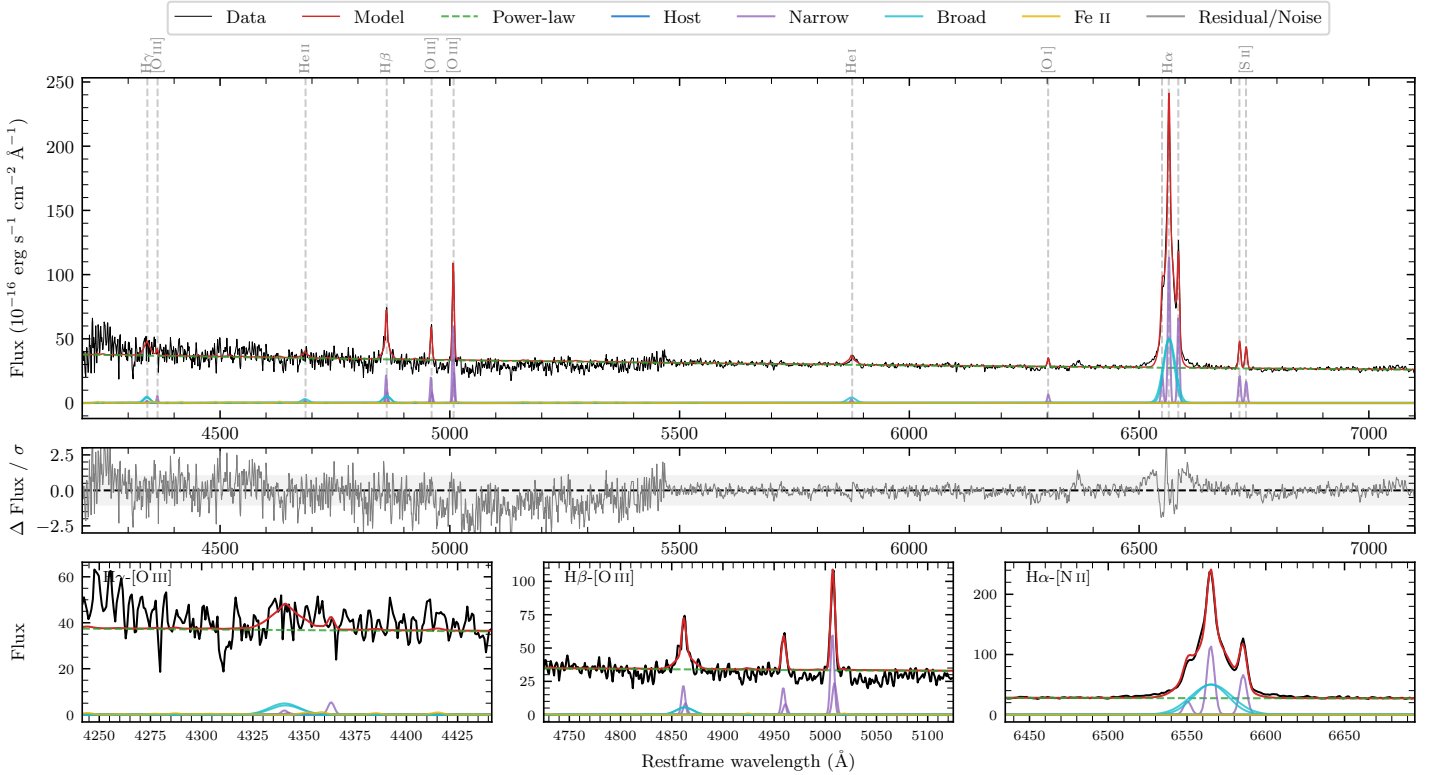
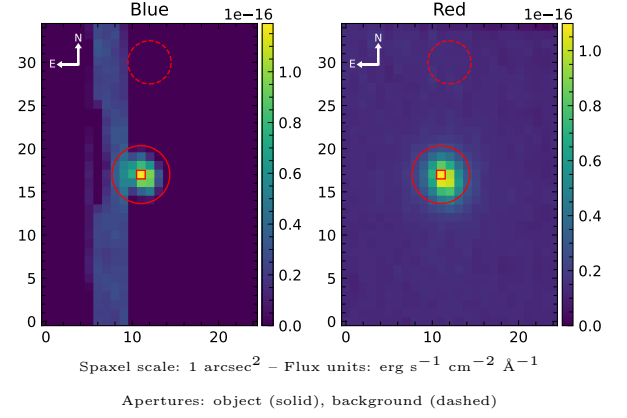


LEDA 578275

Spectrum ID	18336952_sp1	Spectrum type	Bad
Alt name	g0440404-411044	Quality flag	bad_blue
z	0.0329	AGN reference	6dFGS
RA, Dec	70.1681, -41.1788	MW $E(B-V)$	0.021
MJD	60254.69	Power law α_ν	-1.29 ± 0.03
SNR/ \AA B/R	7.5/7.3	$\log L_{5100, \text{AGN}}$	43.62 ± 0.01
Obs airmass	1.03	$\log H\beta_{\text{Br}}/[\text{O III}]$	-0.23 ± 0.08
SMSS ID	18336952	$\log M_{L5100}/M_\odot$	6.88 ± 0.02
Neighbour	4.7", 2036235183	$\log M_{\text{H}\alpha}/M_\odot$	6.66 ± 0.05
SMSS $\langle r_{6''}^{\text{ap}} \rangle$	15.77 ± 0.06	$\log M_{\text{H}\beta}/M_\odot$	6.42 ± 0.06
2MASS K_{ext}	nan \pm nan	$\log M_{[\text{O III}]} / M_\odot$	6.66 ± 0.03



Emission Line Measurements

Line	$\log L$ (erg s ⁻¹)	FWHM (km s ⁻¹)	σ (km s ⁻¹)	EW (Å)
H γ Narrow	—	—	—	—
Hγ Broad	40.67 ± 0.10	1190 ± 63	422 ± 25	4.60 ± 0.65
[O III] 4364	39.74 ± 0.33	257 ± 63	108 ± 25	0.60 ± 0.29
He II Narrow	39.40 ± 0.46	257 ± 63	108 ± 25	0.29 ± 0.24
He II Broad	40.19 ± 0.24	1181 ± 62	501 ± 25	1.80 ± 0.56
H β Narrow	40.55 ± 0.06	294 ± 63	126 ± 25	4.20 ± 0.25
Hβ Broad	40.78 ± 0.07	1180 ± 25	415 ± 25	6.82 ± 0.51
[O III] 5007	41.00 ± 0.02	294 ± 63	126 ± 25	12.17 ± 0.29
He I Narrow	39.63 ± 0.40	257 ± 63	108 ± 25	0.57 ± 0.31
He I Broad	40.44 ± 0.15	1195 ± 63	507 ± 25	3.70 ± 0.70
[O I] 6300	39.99 ± 0.17	257 ± 63	108 ± 25	1.38 ± 0.33
H α Narrow	41.24 ± 0.03	257 ± 63	108 ± 25	25.66 ± 0.54
Hα Broad	41.89 ± 0.01	1290 ± 72	487 ± 25	114.40 ± 0.96
[N II] 6585	41.01 ± 0.03	257 ± 63	108 ± 25	14.86 ± 0.43
[S II] 6718	40.52 ± 0.06	257 ± 63	108 ± 25	4.94 ± 0.36
[S II] 6732	40.42 ± 0.07	257 ± 63	108 ± 25	3.91 ± 0.36

Emission Summary

H α broad SNR	19.80
H β broad SNR	2.26
H γ broad SNR	1.96
AGN frac	0.99
Host frac	0.00
$\log L_{5100, \text{Host}}$	41.27
Fe II/H β	0.48
Fe II/[O III]	0.28

Quality Flags

spurious_hab/hbb	0/0
15100	0
balmer	1
balmer_snr	1
hb_width	0
balmer_width	1