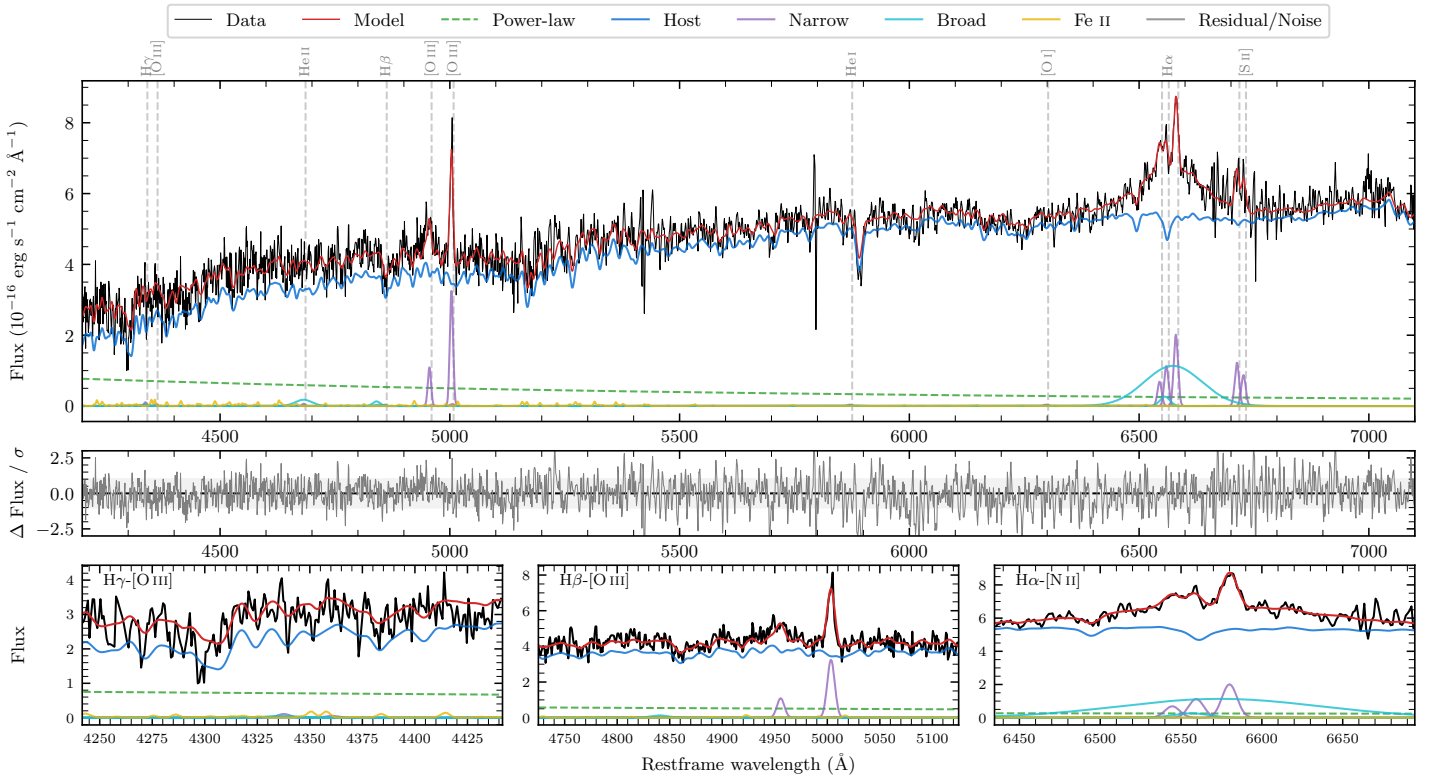
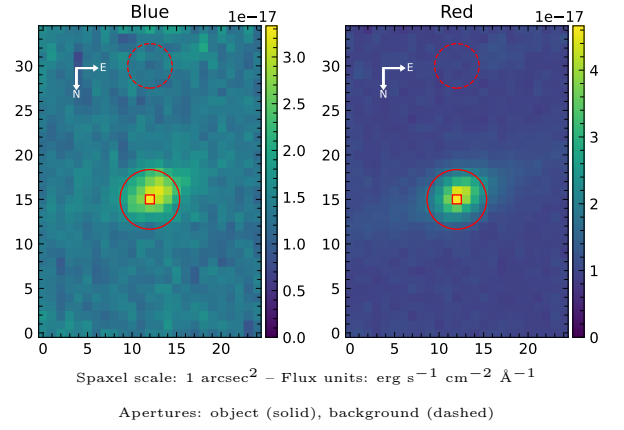


LEDA 146662

Spectrum ID	18318735_sp1	Spectrum type	Sy 1.5+
Alt name	g0454429-431423	Quality flag	good
z	0.0869	AGN reference	6dFGS
RA, Dec	73.6787, -43.2396	MW $E(B-V)$	0.011
MJD	60949.74	Power law α_ν	0.49 ± 0.01
SNR/ \AA B/R	9.7/22.5	$\log L_{5100, \text{AGN}}$	42.67 ± 0.15
Obs airmass	1.03	$\log H\beta_{\text{Br}}/[\text{O III}]$	< -0.06
SMSS ID	18318735	$\log M_{L5100}/M_\odot$	—
Neighbour	None $< 15''$	$\log M_{\text{H}\alpha}/M_\odot$	7.77 ± 0.08
SMSS $\langle r_6''_{\text{ap}} \rangle$	16.95 ± 0.06	$\log M_{\text{H}\beta}/M_\odot$	—
2MASS K_{ext}	12.13 ± 0.08	$\log M_{[\text{O III}]} / M_\odot$	—



Emission Line Measurements

Line	$\log L$ (erg s ⁻¹)	FWHM (km s ⁻¹)	σ (km s ⁻¹)	EW (Å)
H γ Narrow	—	—	—	—
Hγ Broad	—	—	—	—
[O III] 4364	—	—	—	—
He II Narrow	—	—	—	—
He II Broad	40.23 ± 0.23	2728 ± 62	1159 ± 25	14.98 ± 5.34
H β Narrow	—	—	—	—
Hβ Broad	< 40.73	—	—	—
[O III] 5007	40.79 ± 0.02	501 ± 62	213 ± 25	64.16 ± 2.83
He I Narrow	—	—	—	—
He I Broad	—	—	—	—
[O I] 6300	—	—	—	—
H α Narrow	40.44 ± 0.06	499 ± 62	212 ± 25	56.20 ± 3.46
Hα Broad	41.58 ± 0.02	5721 ± 504	2397 ± 29	793.63 ± 14.99
[N II] 6585	40.69 ± 0.03	499 ± 62	212 ± 25	101.30 ± 3.67
[S II] 6718	40.48 ± 0.04	499 ± 62	212 ± 25	66.22 ± 5.40
[S II] 6732	40.34 ± 0.06	499 ± 62	212 ± 25	47.69 ± 4.73

Emission Summary

H α broad SNR	3.24
H β broad SNR	0.48
H γ broad SNR	0.00
AGN frac	0.11
Host frac	0.88
$\log L_{5100, \text{Host}}$	43.55
Fe II/H β	—
Fe II/[O III]	0.37

Quality Flags

spurious_hab/hbb	0/0
15100	2
balmer	2
balmer_snr	2
hb_width	2
balmer_width	2