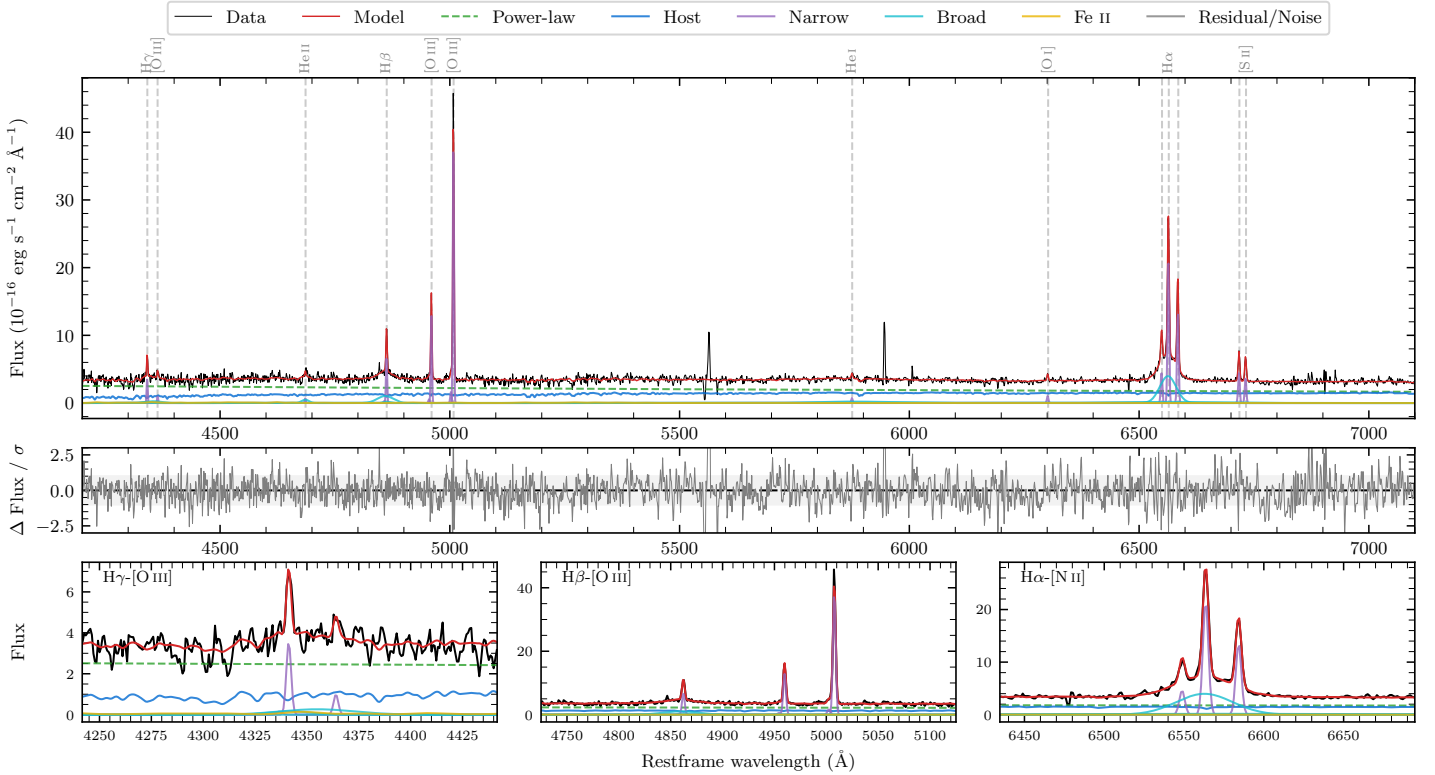
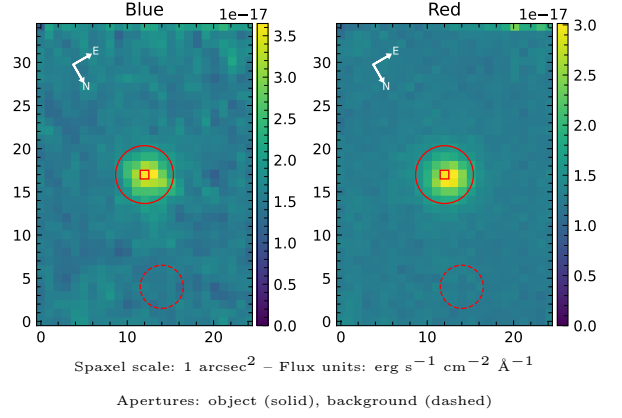


LEDA 3084960

Spectrum ID	18032661_sp2	Spectrum type	Sy 1.5
Alt name	g0404433-295323	Quality flag	good
z	0.0600	AGN reference	6dFGS
RA, Dec	61.1802, -29.8898	MW $E(B - V)$	0.009
MJD	60552.74	Power law α_ν	-1.19 ± 0.21
SNR/ \AA B/R	7.2/11.6	$\log L_{5100, \text{AGN}}$	42.98 ± 0.03
Obs airmass	1.08	$\log H\beta_{\text{Br}}/[\text{O III}]$	-0.43 ± 0.05
SMSS ID	18032661	$\log M_{L5100}/M_\odot$	7.18 ± 0.08
Neighbour	None $< 15''$	$\log M_{\text{H}\alpha}/M_\odot$	6.67 ± 0.04
SMSS $\langle r_6''_{\text{ap}} \rangle$	17.14 ± 0.09	$\log M_{\text{H}\beta}/M_\odot$	6.94 ± 0.09
2MASS K_{ext}	13.93 ± 0.15	$\log M_{[\text{O III}]} / M_\odot$	7.27 ± 0.08



Emission Line Measurements

Line	$\log L$ (erg s ⁻¹)	FWHM (km s ⁻¹)	σ (km s ⁻¹)	EW (Å)
H γ Narrow	39.99 ± 0.07	195 ± 62	106 ± 26	4.59 ± 0.47
Hγ Broad	—	—	—	—
[O III] 4364	39.42 ± 0.23	194 ± 62	79 ± 25	1.23 ± 0.38
He II Narrow	39.30 ± 0.28	194 ± 62	79 ± 25	0.98 ± 0.34
He II Broad	39.95 ± 0.16	1178 ± 62	500 ± 25	4.46 ± 0.90
H β Narrow	40.33 ± 0.03	195 ± 62	106 ± 26	10.86 ± 0.44
Hβ Broad	40.66 ± 0.05	2267 ± 194	863 ± 37	22.78 ± 1.35
[O III] 5007	41.09 ± 0.01	195 ± 62	106 ± 26	64.23 ± 0.51
He I Narrow	39.43 ± 0.13	194 ± 62	79 ± 25	1.61 ± 0.30
He I Broad	40.58 ± 0.08	9086 ± 70	3858 ± 28	22.44 ± 2.52
[O I] 6300	39.60 ± 0.12	194 ± 62	79 ± 25	2.51 ± 0.35
H α Narrow	40.94 ± 0.01	194 ± 62	79 ± 25	56.40 ± 0.48
Hα Broad	41.31 ± 0.02	1954 ± 69	979 ± 91	133.16 ± 3.02
[N II] 6585	40.73 ± 0.01	194 ± 62	79 ± 25	35.31 ± 0.46
[S II] 6718	40.26 ± 0.02	194 ± 62	79 ± 25	12.09 ± 0.33
[S II] 6732	40.17 ± 0.03	194 ± 62	79 ± 25	9.86 ± 0.34

Emission Summary

H α broad SNR	8.28
H β broad SNR	2.54
H γ broad SNR	0.89
AGN frac	0.65
Host frac	0.35
$\log L_{5100, \text{Host}}$	42.71
Fe II/H β	0.40
Fe II/[O III]	0.15

Quality Flags

spurious_hab/hbb	0/0
15100	0
balmer	1
balmer_snr	2
hb_width	0
balmer_width	0