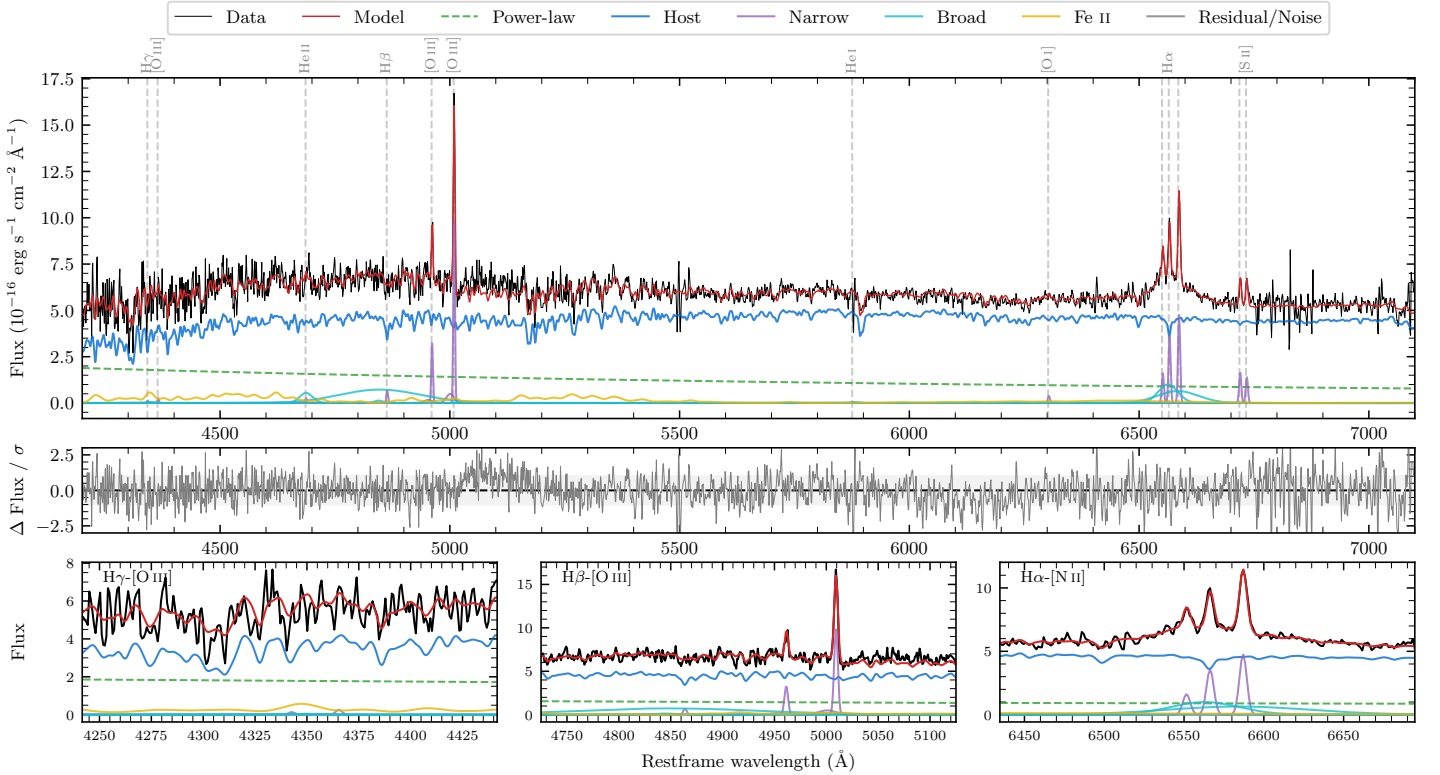
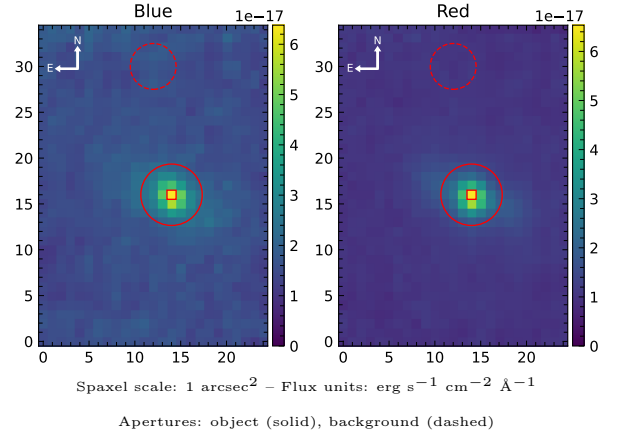


LEDA 827551

Spectrum ID	17832134_sp1	Spectrum type	Sy 1.5+
Alt name	g0321104-212929	Quality flag	good
z	0.0722	AGN reference	6dFGS
RA, Dec	50.2932, -21.4914	MW $E(B - V)$	0.021
MJD	60258.52	Power law α_ν	-0.33 ± 0.15
SNR/ \AA B/R	11.9/21.7	$\log L_{5100, \text{AGN}}$	42.94 ± 0.03
Obs airmass	1.09	$\log H\beta_{\text{Br}}/[\text{O III}]$	< -0.29
SMSS ID	17832134	$\log M_{L5100}/M_\odot$	—
Neighbour	None $< 15''$	$\log M_{\text{H}\alpha}/M_\odot$	7.00 ± 0.05
SMSS $\langle r_6''_{\text{ap}} \rangle$	16.90 ± 0.12	$\log M_{\text{H}\beta}/M_\odot$	—
2MASS K_{ext}	12.50 ± 0.14	$\log M_{[\text{O III}]} / M_\odot$	—



Emission Line Measurements

Line	$\log L$ (erg s ⁻¹)	FWHM (km s ⁻¹)	σ (km s ⁻¹)	EW (Å)
H γ Narrow	—	—	—	—
Hγ Broad	—	—	—	—
[O III] 4364	—	—	—	—
He II Narrow	39.20 ± 0.44	252 ± 62	106 ± 25	0.80 ± 0.60
He II Broad	—	—	—	—
H β Narrow	39.70 ± 0.21	257 ± 63	311 ± 45	2.66 ± 1.47
Hβ Broad	< 40.57	—	—	—
[O III] 5007	40.86 ± 0.03	257 ± 63	311 ± 45	41.16 ± 1.72
He I Narrow	—	—	—	—
He I Broad	—	—	—	—
[O I] 6300	39.46 ± 0.18	252 ± 62	106 ± 25	2.40 ± 0.58
H α Narrow	40.45 ± 0.02	252 ± 62	106 ± 25	24.86 ± 0.69
Hα Broad	41.23 ± 0.02	3036 ± 144	1357 ± 37	151.60 ± 3.54
[N II] 6585	40.57 ± 0.02	252 ± 62	106 ± 25	33.31 ± 0.75
[S II] 6718	40.13 ± 0.05	252 ± 62	106 ± 25	12.30 ± 0.78
[S II] 6732	40.05 ± 0.05	252 ± 62	106 ± 25	10.42 ± 0.72

Emission Summary

H α broad SNR	3.12
H β broad SNR	0.27
H γ broad SNR	0.00
AGN frac	0.24
Host frac	0.76
$\log L_{5100, \text{Host}}$	43.44
Fe II/H β	—
Fe II/[O III]	—

Quality Flags

spurious_hab/hbb	0/1
15100	1
balmer	2
balmer_snr	2
hb_width	2
balmer_width	2