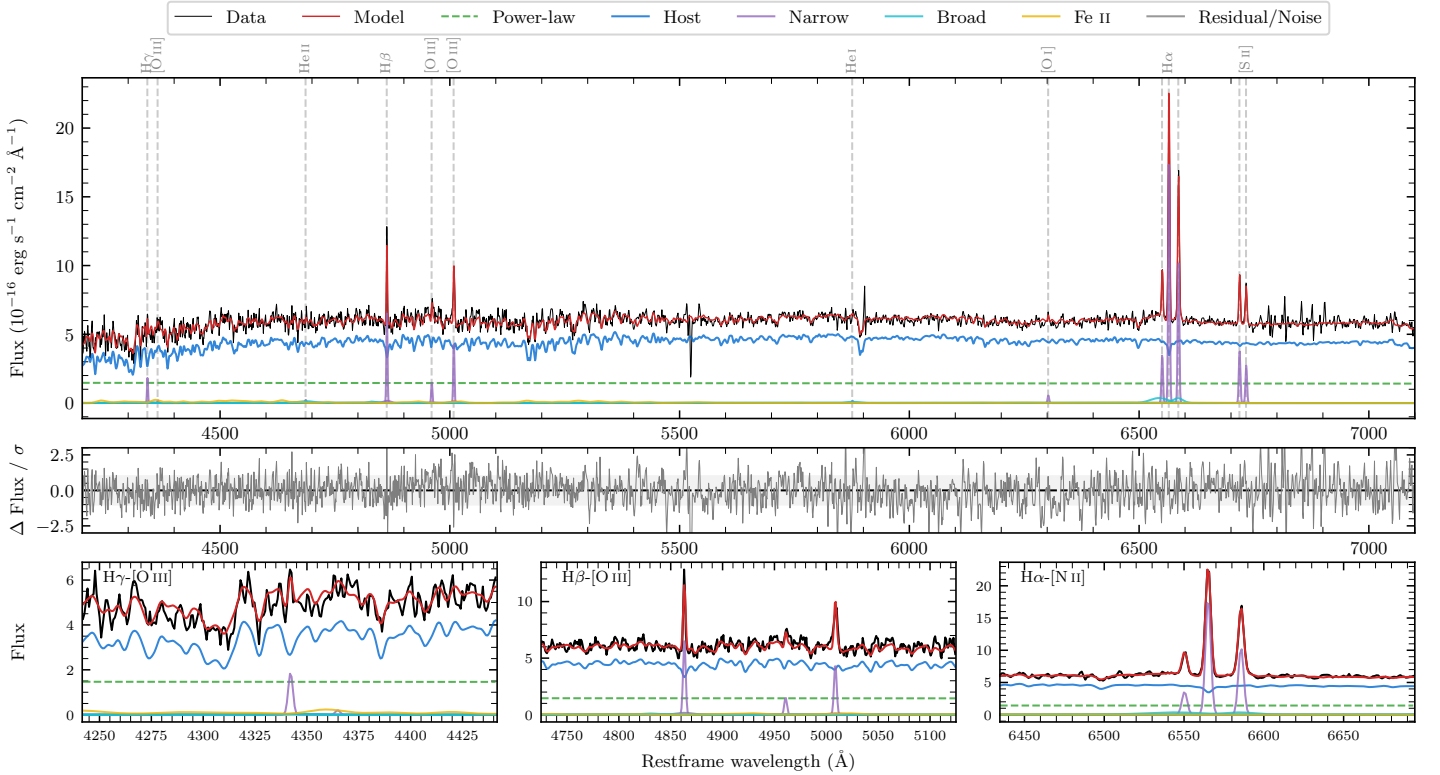
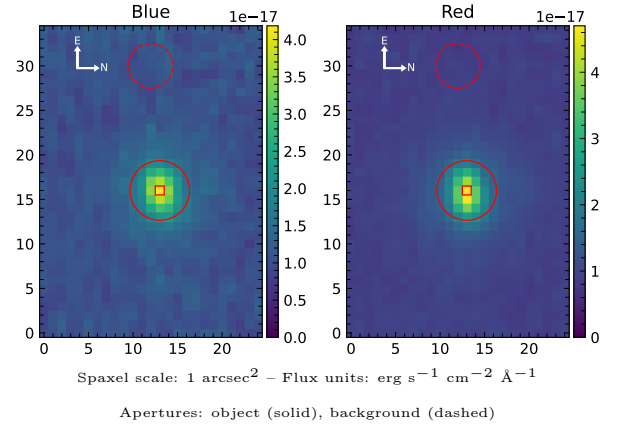


LEDA 783834

Spectrum ID	17653314_sp1	Spectrum type	Sy 1.5+
Alt name	g0309513-245938	Quality flag	good
z	0.0677	AGN reference	6dFGS
RA, Dec	47.4636, -24.9938	MW $E(B - V)$	0.017
MJD	60182.78	Power law α_ν	-1.92 ± 0.05
SNR/ \AA B/R	14.6/25.9	$\log L_{5100, \text{AGN}}$	42.91 ± 0.02
Obs airmass	1.01	$\log H\beta_{\text{Br}}/[\text{O III}]$	< 0.02
SMSS ID	17653314	$\log M_{L5100}/M_\odot$	—
Neighbour	None $< 15''$	$\log M_{\text{H}\alpha}/M_\odot$	6.63 ± 0.08
SMSS $\langle r_6''_{\text{ap}} \rangle$	16.56 ± 0.04	$\log M_{\text{H}\beta}/M_\odot$	—
2MASS K_{ext}	12.59 ± 0.14	$\log M_{[\text{O III}]} / M_\odot$	—



Emission Line Measurements

Line	$\log L$ (erg s ⁻¹)	FWHM (km s ⁻¹)	σ (km s ⁻¹)	EW (Å)
H γ Narrow	39.85 ± 0.11	194 ± 63	202 ± 64	4.42 ± 1.32
Hγ Broad	—	—	—	—
[O III] 4364	—	—	—	—
He II Narrow	38.93 ± 0.43	186 ± 62	76 ± 25	0.53 ± 0.44
He II Broad	39.88 ± 0.28	2798 ± 62	1188 ± 25	4.68 ± 1.83
H β Narrow	40.45 ± 0.04	194 ± 63	202 ± 64	17.64 ± 1.15
Hβ Broad	< 40.32	—	—	—
[O III] 5007	40.30 ± 0.05	194 ± 63	202 ± 64	12.43 ± 1.17
He I Narrow	38.88 ± 0.41	186 ± 62	76 ± 25	0.47 ± 0.31
He I Broad	39.53 ± 0.31	1460 ± 62	620 ± 25	2.12 ± 1.02
[O I] 6300	39.43 ± 0.14	186 ± 62	76 ± 25	1.71 ± 0.33
H α Narrow	40.95 ± 0.01	186 ± 62	76 ± 25	57.10 ± 0.40
Hα Broad	40.51 ± 0.06	3309 ± 119	1106 ± 25	20.42 ± 1.20
[N II] 6585	40.71 ± 0.01	186 ± 62	76 ± 25	33.00 ± 0.34
[S II] 6718	40.28 ± 0.02	186 ± 62	76 ± 25	12.28 ± 0.35
[S II] 6732	40.15 ± 0.03	186 ± 62	76 ± 25	8.92 ± 0.34

Emission Summary

H α broad SNR	1.03
H β broad SNR	0.52
H γ broad SNR	0.00
AGN frac	0.26
Host frac	0.74
$\log L_{5100, \text{Host}}$	43.37
Fe II/H β	—
Fe II/[O III]	2.26

Quality Flags

spurious_hab/hbb	0/0
15100	1
balmer	2
balmer_snr	2
hb_width	2
balmer_width	2