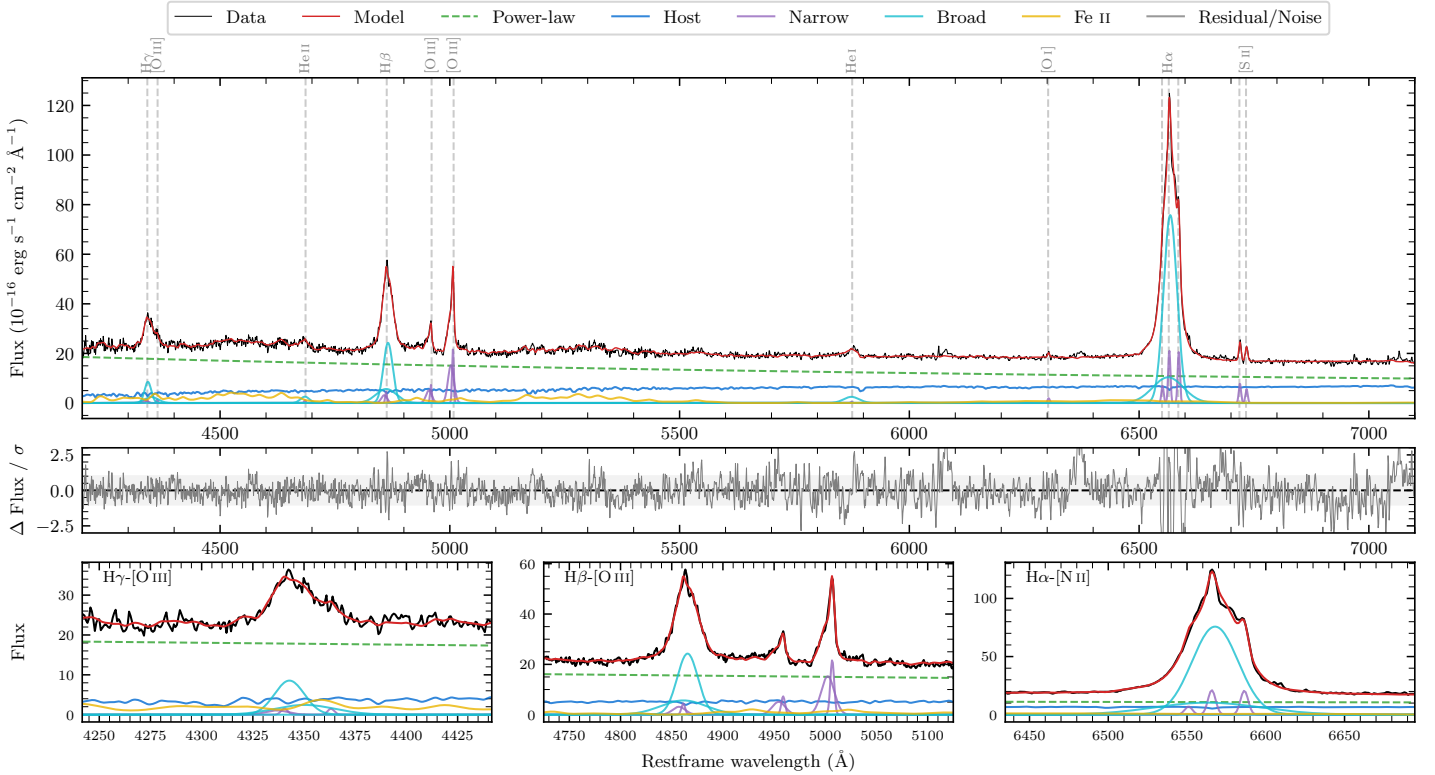
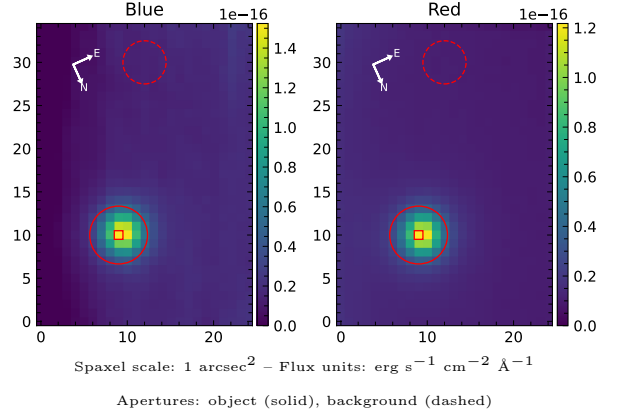


LEDA 3096712

Spectrum ID	1762405_sp1	Spectrum type	Sy 1.2
Alt name	g2257390-365607	Quality flag	good
z	0.0387	AGN reference	6dFGS
RA, Dec	344.4126, -36.9352	MW $E(B-V)$	0.014
MJD	59904.46	Power law α_ν	-0.80 ± 0.08
SNR/ \AA B/R	15.3/28.0	$\log L_{5100, \text{AGN}}$	43.42 ± 0.02
Obs airmass	1.12	$\log H\beta_{\text{Br}}/[\text{O III}]$	0.43 ± 0.01
SMSS ID	1762405	$\log M_{L5100}/M_\odot$	7.08 ± 0.03
Neighbour	None $< 15''$	$\log M_{\text{H}\alpha}/M_\odot$	7.04 ± 0.03
SMSS $\langle r_6''_{\text{ap}} \rangle$	nan \pm nan	$\log M_{\text{H}\beta}/M_\odot$	7.05 ± 0.03
2MASS K_{ext}	11.78 ± 0.05	$\log M_{[\text{O III}]} / M_\odot$	6.99 ± 0.03



Emission Line Measurements

Line	$\log L$ (erg s^{-1})	FWHM (km s^{-1})	σ (km s^{-1})	EW (\AA)
H γ Narrow	39.89 ± 0.32	412 ± 68	351 ± 27	1.23 ± 0.39
Hγ Broad	40.96 ± 0.04	1354 ± 106	576 ± 60	14.32 ± 0.63
[O III] 4364	39.35 ± 0.34	266 ± 63	112 ± 25	0.36 ± 0.20
He II Narrow	39.28 ± 0.36	266 ± 63	112 ± 25	0.33 ± 0.18
He II Broad	40.38 ± 0.09	1470 ± 129	624 ± 54	4.02 ± 0.45
H β Narrow	40.41 ± 0.09	412 ± 68	351 ± 27	4.65 ± 0.36
Hβ Broad	41.53 ± 0.01	1635 ± 39	714 ± 30	62.24 ± 0.68
[O III] 5007	41.11 ± 0.01	412 ± 68	351 ± 27	24.04 ± 0.37
He I Narrow	39.01 ± 0.34	266 ± 63	112 ± 25	0.23 ± 0.12
He I Broad	40.59 ± 0.03	2020 ± 111	858 ± 46	8.81 ± 0.35
[O I] 6300	39.63 ± 0.08	266 ± 63	112 ± 25	1.06 ± 0.14
H α Narrow	40.68 ± 0.02	266 ± 63	112 ± 25	12.46 ± 0.21
Hα Broad	42.13 ± 0.01	1686 ± 63	697 ± 25	349.76 ± 0.61
[N II] 6585	40.67 ± 0.02	266 ± 63	112 ± 25	12.26 ± 0.20
[S II] 6718	40.26 ± 0.02	266 ± 63	112 ± 25	4.90 ± 0.15
[S II] 6732	40.12 ± 0.03	266 ± 63	112 ± 25	3.53 ± 0.15

Emission Summary

H α broad SNR	60.90
H β broad SNR	21.12
H γ broad SNR	7.59
AGN frac	0.74
Host frac	0.26
$\log L_{5100, \text{Host}}$	42.96
Fe II/H β	0.96
Fe II/[O III]	2.56

Quality Flags

spurious_hab/hbb	0/0
15100	0
balmer	0
balmer_snr	0
hb_width	0
balmer_width	1