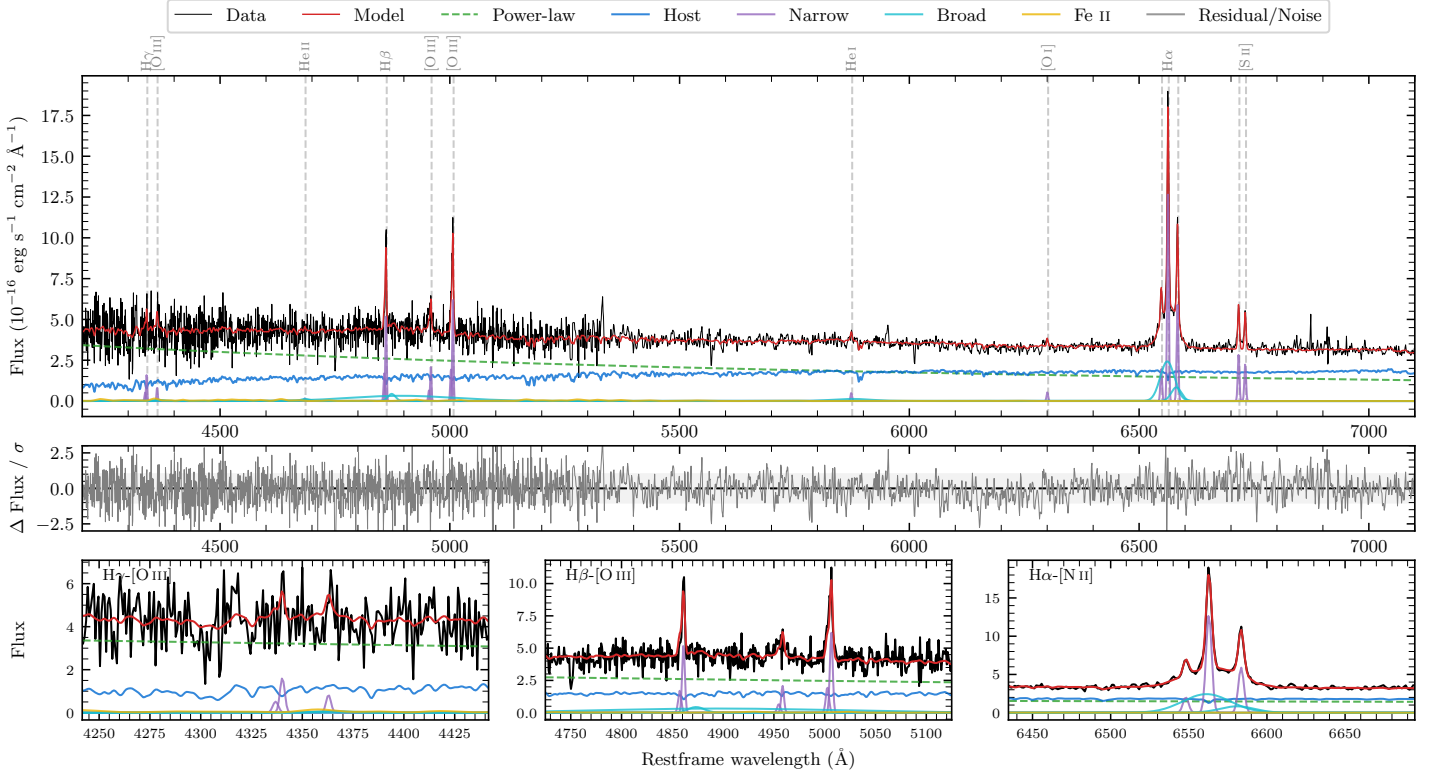
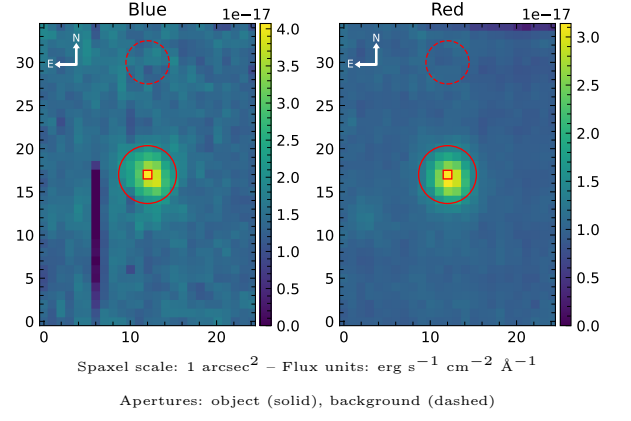


6dFGS gJ040933.4–372407

Spectrum ID	17533677_sp1	Spectrum type	Sy 1.2
Alt name	g0409334–372407	Quality flag	good
z	0.0585	AGN reference	6dFGS
RA, Dec	62.3890, –37.4019	MW $E(B - V)$	0.005
MJD	60257.66	Power law α_ν	-0.12 ± 0.21
SNR/ \AA B/R	7.2/12.0	$\log L_{5100, \text{AGN}}$	43.00 ± 0.03
Obs airmass	1.02	$\log H\beta_{\text{Br}}/[\text{O III}]$	0.54 ± 0.08
SMSS ID	17533677	$\log M_{L5100}/M_\odot$	7.06 ± 0.30
Neighbour	10.8", 17533678	$\log M_{H\alpha}/M_\odot$	6.47 ± 0.05
SMSS $\langle r_6'' \text{ap} \rangle$	17.16 ± 0.04	$\log M_{H\beta}/M_\odot$	6.95 ± 0.31
2MASS K_{ext}	nan \pm nan	$\log M_{[\text{O III}]} / M_\odot$	6.81 ± 0.31



Emission Line Measurements

Line	$\log L$ (erg s $^{-1}$)	FWHM (km s $^{-1}$)	σ (km s $^{-1}$)	EW (Angstrom)
H γ Narrow	39.76 ± 0.16	223 ± 63	133 ± 25	2.17 ± 0.47
Hγ Broad	—	—	—	—
[O III] 4364	39.34 ± 0.31	195 ± 63	82 ± 25	0.82 ± 0.38
He II Narrow	—	—	—	—
He II Broad	39.44 ± 0.43	1337 ± 65	567 ± 26	1.18 ± 1.00
H β Narrow	40.33 ± 0.04	223 ± 63	133 ± 25	9.92 ± 0.50
Hβ Broad	40.95 ± 0.07	1969 ± 661	5561 ± 130	41.83 ± 3.94
[O III] 5007	40.41 ± 0.03	223 ± 63	133 ± 25	12.58 ± 0.48
He I Narrow	39.25 ± 0.20	195 ± 63	82 ± 25	1.18 ± 0.31
He I Broad	40.09 ± 0.17	5105 ± 65	2168 ± 26	8.10 ± 1.87
[O I] 6300	39.31 ± 0.15	195 ± 63	82 ± 25	1.53 ± 0.32
H α Narrow	40.71 ± 0.01	195 ± 63	82 ± 25	41.60 ± 0.55
Hα Broad	41.01 ± 0.01	1933 ± 75	673 ± 25	83.37 ± 1.33
[N II] 6585	40.37 ± 0.02	195 ± 63	82 ± 25	19.30 ± 0.46
[S II] 6718	40.06 ± 0.03	195 ± 63	82 ± 25	9.82 ± 0.39
[S II] 6732	39.96 ± 0.04	195 ± 63	82 ± 25	7.80 ± 0.40

Emission Summary

H α broad SNR	4.81
H β broad SNR	1.36
H γ broad SNR	0.00
AGN frac	0.63
Host frac	0.37
$\log L_{5100, \text{Host}}$	42.77
Fe II/H β	0.19
Fe II/[O III]	0.65

Quality Flags

spurious_hab/hbb	0/0
15100	0
balmer	1
balmer_snr	2
hb_width	2
balmer_width	0