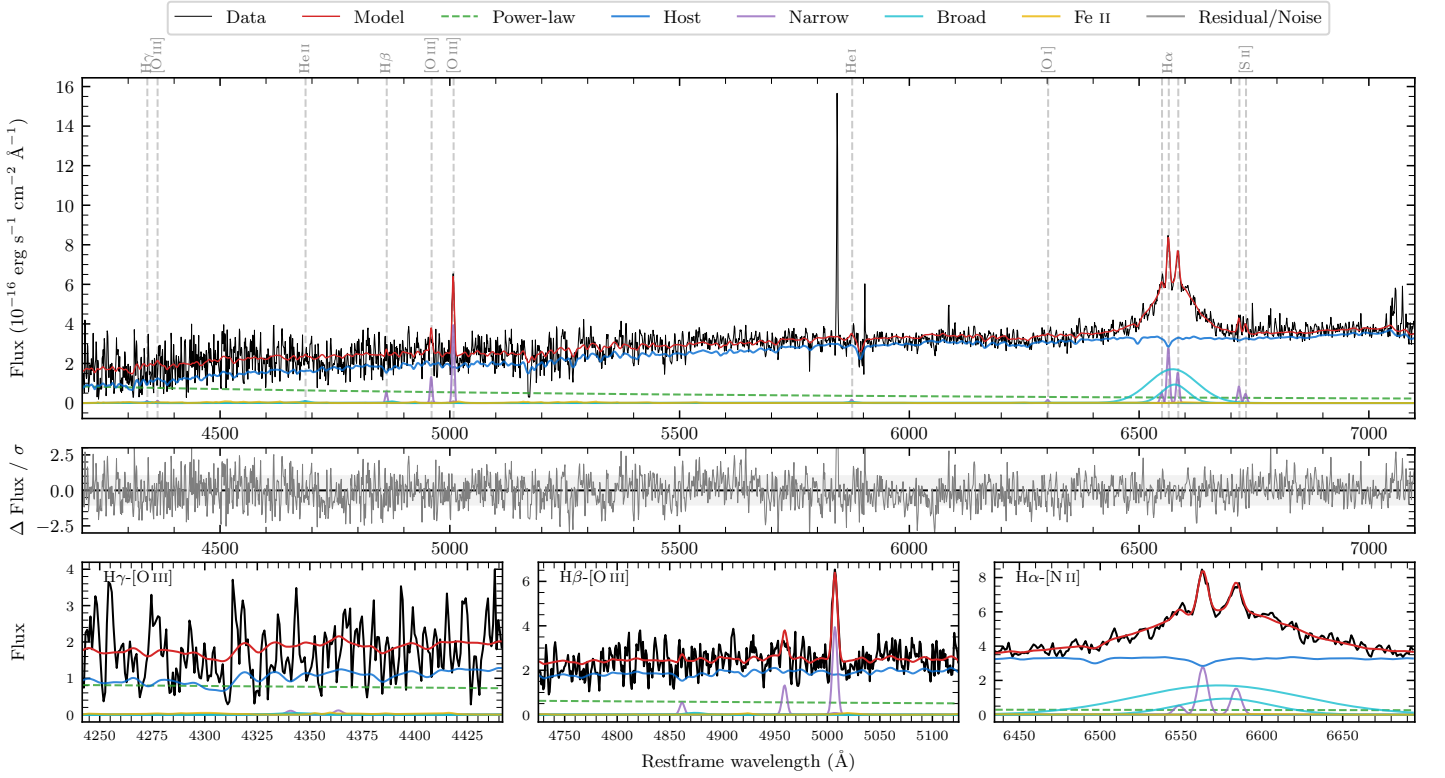
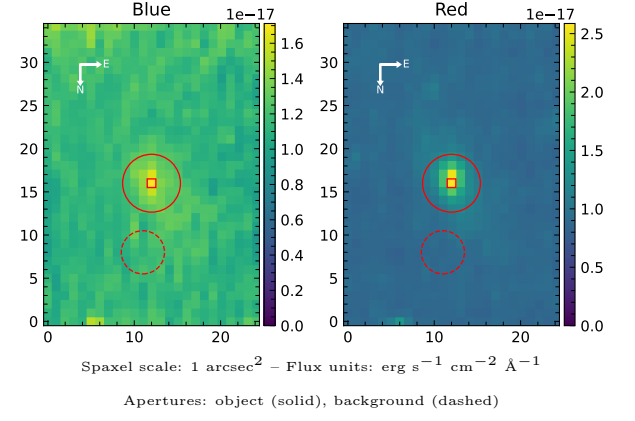


6dFGS gJ161944.1–132616

Spectrum ID	174340801_sp1	Spectrum type	Sy 1.5+
Alt name	g1619441–132616	Quality flag	good
z	0.0786	AGN reference	6dFGS
RA, Dec	244.9336, –13.4379	MW $E(B - V)$	0.318
MJD	60165.4	Power law α_ν	0.48 ± 0.02
SNR/ \AA B/R	4.4/10.1	$\log L_{5100, \text{AGN}}$	42.61 ± 0.06
Obs airmass	1.05	$\log H\beta_{\text{Br}}/[\text{O III}]$	< 0.09
SMSS ID	174340801	$\log M_{L5100}/M_\odot$	–
Neighbour	10.7", 174340798	$\log M_{\text{H}\alpha}/M_\odot$	7.60 ± 0.04
SMSS $\langle r_{6''}^{\text{ap}} \rangle$	18.15 ± 0.04	$\log M_{\text{H}\beta}/M_\odot$	–
2MASS K_{ext}	12.53 ± 0.10	$\log M_{[\text{O III}]} / M_\odot$	–



Emission Line Measurements

Line	$\log L$ (erg s $^{-1}$)	FWHM (km s $^{-1}$)	σ (km s $^{-1}$)	EW (Angstroms)
H γ Narrow	–	–	–	–
Hγ Broad	–	–	–	–
[O III] 4364	–	–	–	–
He II Narrow	–	–	–	–
He II Broad	39.63 ± 0.53	1637 ± 62	695 ± 25	4.36 ± 4.31
H β Narrow	39.73 ± 0.24	334 ± 63	148 ± 26	6.02 ± 2.80
Hβ Broad	< 40.70	–	–	–
[O III] 5007	40.61 ± 0.04	334 ± 63	148 ± 26	48.06 ± 3.41
He I Narrow	39.30 ± 0.42	337 ± 62	140 ± 25	3.55 ± 3.04
He I Broad	–	–	–	–
[O I] 6300	39.29 ± 0.42	337 ± 62	140 ± 25	4.20 ± 2.86
H α Narrow	40.55 ± 0.03	337 ± 62	140 ± 25	83.97 ± 3.81
Hα Broad	41.68 ± 0.01	4407 ± 200	1800 ± 41	1131.82 ± 17.90
[N II] 6585	40.29 ± 0.08	337 ± 62	140 ± 25	47.00 ± 4.31
[S II] 6718	40.04 ± 0.16	337 ± 62	140 ± 25	27.28 ± 5.39
[S II] 6732	39.78 ± 0.17	337 ± 62	140 ± 25	15.24 ± 4.62

Emission Summary

H α broad SNR	4.87
H β broad SNR	0.37
H γ broad SNR	0.00
AGN frac	0.21
Host frac	0.79
$\log L_{5100, \text{Host}}$	43.18
Fe II/H β	–
Fe II/[O III]	–

Quality Flags

spurious_hab/hbb	0/0
15100	2
balmer	2
balmer_snr	2
hb_width	2
balmer_width	2