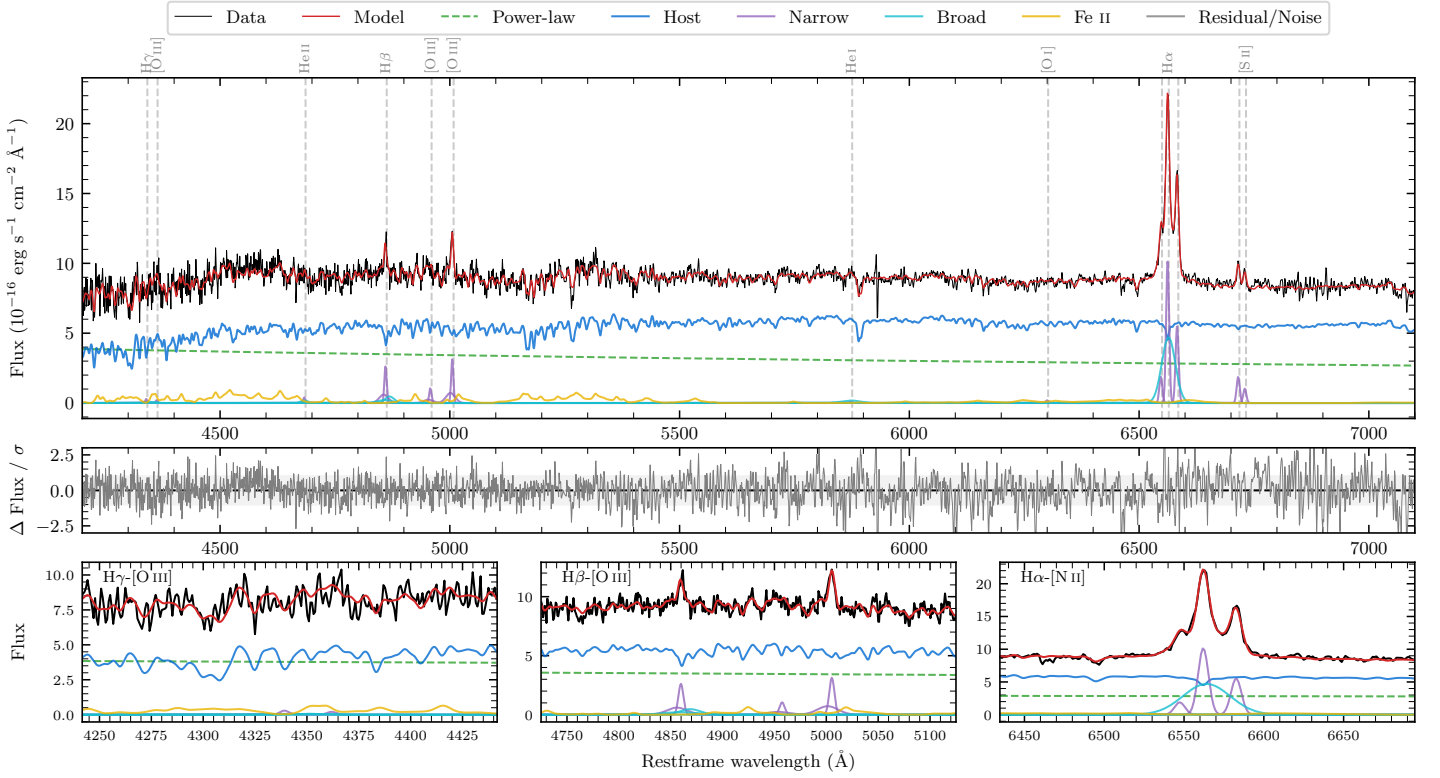
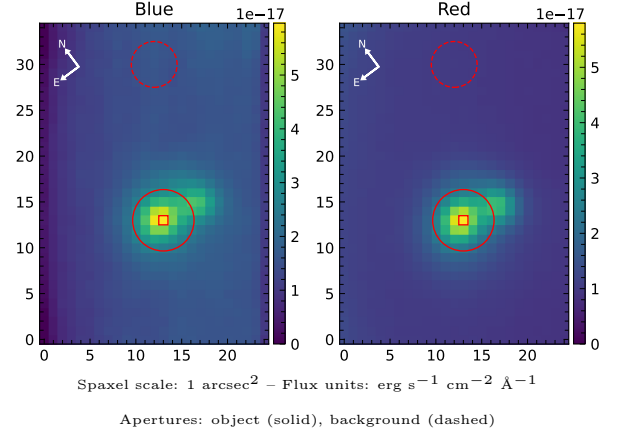


LEDA 193275

Spectrum ID	1743013_sp1	Spectrum type	Sy 1.5
Alt name	g2238225-353348	Quality flag	good
z	0.0620	AGN reference	6dFGS
RA, Dec	339.5936, -35.5632	MW $E(B - V)$	0.011
MJD	59438.47	Power law α_ν	-1.30 ± 0.21
SNR/ \AA B/R	15.6/34.4	$\log L_{5100, \text{AGN}}$	43.21 ± 0.03
Obs airmass	1.57	$\log H\beta_{\text{Br}}/[\text{O III}]$	-0.22 ± 0.16
SMSS ID	1743013	$\log M_{L5100}/M_\odot$	7.01 ± 0.13
Neighbour	3.3", 2003015250	$\log M_{\text{H}\alpha}/M_\odot$	6.45 ± 0.05
SMSS $\langle r_{6''}^{\text{ap}} \rangle$	16.19 ± 0.02	$\log M_{\text{H}\beta}/M_\odot$	6.53 ± 0.16
2MASS K_{ext}	12.30 ± 0.08	$\log M_{[\text{O III}]} / M_\odot$	6.75 ± 0.14



Emission Line Measurements

Line	$\log L$ (erg s^{-1})	FWHM (km s^{-1})	σ (km s^{-1})	EW (\AA)
H γ Narrow	39.49 ± 0.41	403 ± 65	439 ± 41	0.85 ± 0.84
Hγ Broad	—	—	—	—
[O III] 4364	—	—	—	—
He II Narrow	39.38 ± 0.37	355 ± 63	149 ± 25	0.71 ± 0.40
He II Broad	39.56 ± 0.42	1178 ± 62	500 ± 25	1.07 ± 0.72
H β Narrow	40.48 ± 0.07	403 ± 65	440 ± 41	9.26 ± 0.78
Hβ Broad	40.35 ± 0.15	1663 ± 244	696 ± 98	6.16 ± 0.98
[O III] 5007	40.57 ± 0.05	403 ± 65	440 ± 41	11.63 ± 0.81
He I Narrow	38.83 ± 0.49	355 ± 63	149 ± 25	0.23 ± 0.22
He I Broad	39.97 ± 0.16	2474 ± 63	1050 ± 25	3.25 ± 0.63
[O I] 6300	39.19 ± 0.28	355 ± 63	149 ± 25	0.56 ± 0.22
H α Narrow	40.92 ± 0.01	355 ± 63	149 ± 25	31.25 ± 0.29
Hα Broad	41.25 ± 0.01	1586 ± 63	570 ± 25	65.82 ± 0.59
[N II] 6585	40.66 ± 0.02	355 ± 63	149 ± 25	17.09 ± 0.28
[S II] 6718	40.20 ± 0.03	355 ± 63	149 ± 25	5.99 ± 0.26
[S II] 6732	39.94 ± 0.06	355 ± 63	149 ± 25	3.30 ± 0.25

Emission Summary

H α broad SNR	8.95
H β broad SNR	1.34
H γ broad SNR	0.00
AGN frac	0.40
Host frac	0.60
$\log L_{5100, \text{Host}}$	43.39
Fe II/H β	6.97
Fe II/[O III]	3.77

Quality Flags

spurious_hab/hbb	0/0
15100	1
balmer	1
balmer_snr	2
hb_width	0
balmer_width	0