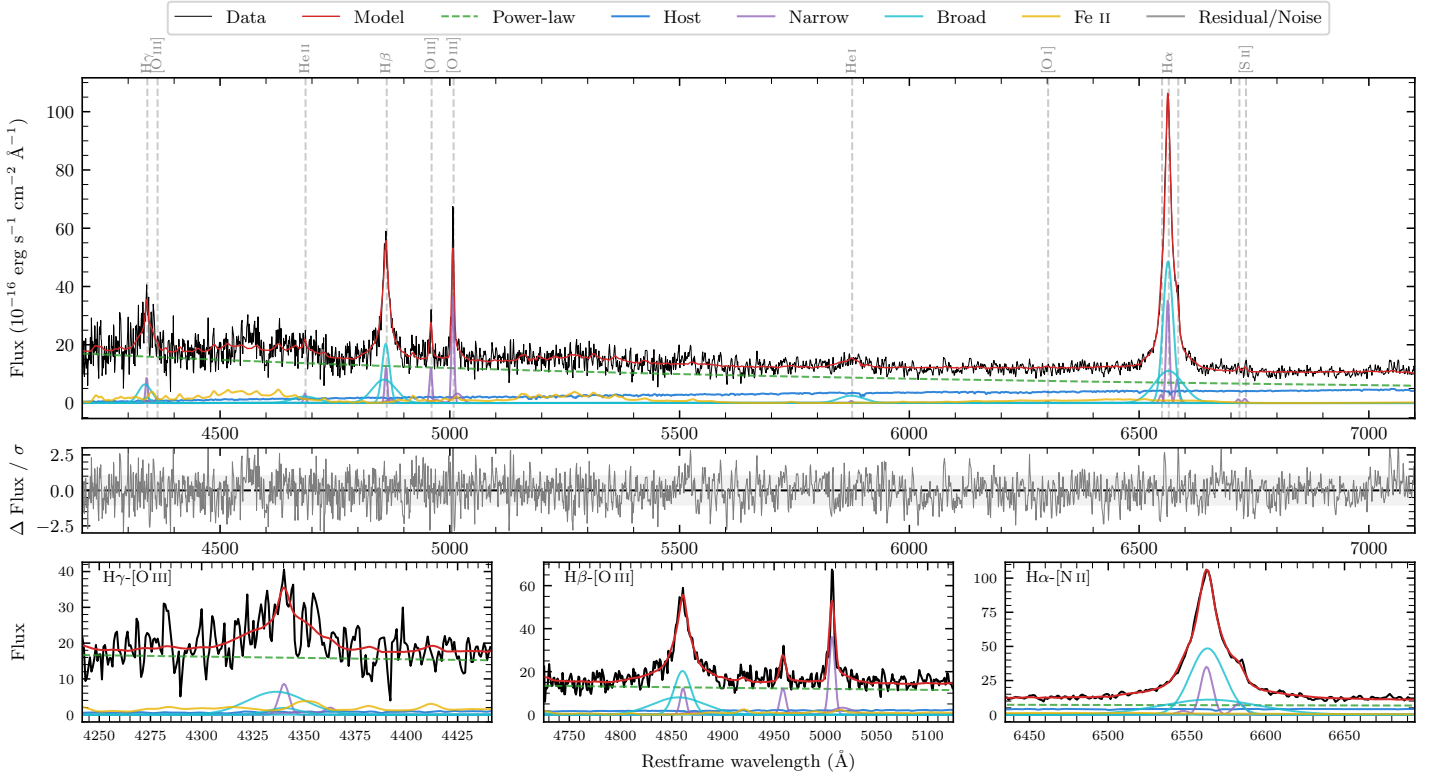
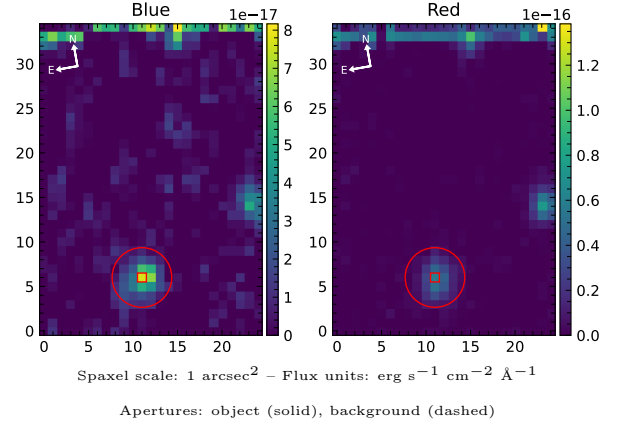


2MASS J17033601–2047200

Spectrum ID	173614751_sp1	Spectrum type	Sy 1.2
Alt name	4127689216182079360	Quality flag	good
z	0.0267	AGN reference	AllBRICS2
RA, Dec	255.9001, -20.7889	MW $E(B - V)$	0.246
MJD	60842.55	Power law α_ν	-0.00 ± 0.19
SNR/ \AA B/R	5.7/7.8	$\log L_{5100, \text{AGN}}$	43.00 ± 0.02
Obs airmass	1.02	$\log H\beta_{\text{Br}}/[\text{O III}]$	0.43 ± 0.03
SMSS ID	173614751	$\log M_{L5100}/M_\odot$	6.81 ± 0.04
Neighbour	12.6", 173614747	$\log M_{\text{H}\alpha}/M_\odot$	6.50 ± 0.04
SMSS $\langle r_6^{\text{ap}} \rangle$	15.67 ± 0.06	$\log M_{\text{H}\beta}/M_\odot$	6.81 ± 0.05
2MASS K_{ext}	nan \pm nan	$\log M_{[\text{O III}]} / M_\odot$	6.73 ± 0.05



Emission Line Measurements

Line	$\log L$ (erg s ⁻¹)	FWHM (km s ⁻¹)	σ (km s ⁻¹)	EW (Å)
H γ Narrow	40.08 ± 0.16	422 ± 64	417 ± 41	4.56 ± 1.02
Hγ Broad	40.68 ± 0.08	2065 ± 235	804 ± 47	17.15 ± 1.41
[O III] 4364	39.28 ± 0.40	408 ± 63	172 ± 25	0.72 ± 0.55
He II Narrow	39.58 ± 0.26	408 ± 63	172 ± 25	1.66 ± 0.60
He II Broad	40.42 ± 0.12	4092 ± 70	1737 ± 28	11.59 ± 1.75
H β Narrow	40.29 ± 0.11	422 ± 64	417 ± 41	9.12 ± 1.00
Hβ Broad	41.20 ± 0.02	1468 ± 63	839 ± 37	74.70 ± 1.74
[O III] 5007	40.77 ± 0.03	422 ± 64	417 ± 41	29.40 ± 1.07
He I Narrow	39.01 ± 0.44	408 ± 63	172 ± 25	0.69 ± 0.50
He I Broad	40.47 ± 0.06	3231 ± 72	1372 ± 29	20.28 ± 2.91
[O I] 6300	38.91 ± 0.44	408 ± 63	172 ± 25	0.64 ± 0.58
H α Narrow	40.76 ± 0.03	408 ± 63	172 ± 25	48.88 ± 0.83
Hα Broad	41.58 ± 0.01	1338 ± 64	659 ± 25	323.75 ± 2.03
[N II] 6585	40.12 ± 0.06	408 ± 63	172 ± 25	11.39 ± 0.74
[S II] 6718	39.34 ± 0.24	408 ± 63	172 ± 25	1.95 ± 0.70
[S II] 6732	39.39 ± 0.22	408 ± 63	172 ± 25	2.19 ± 0.70

Emission Summary

H α broad SNR	21.04
H β broad SNR	9.98
H γ broad SNR	3.06
AGN frac	0.84
Host frac	0.16
$\log L_{5100, \text{Host}}$	42.26
Fe II/H β	0.99
Fe II/[O III]	2.68

Quality Flags

spurious_hab/hbb	0/0
15100	0
balmer	0
balmer_snr	0
hb_width	1
balmer_width	0