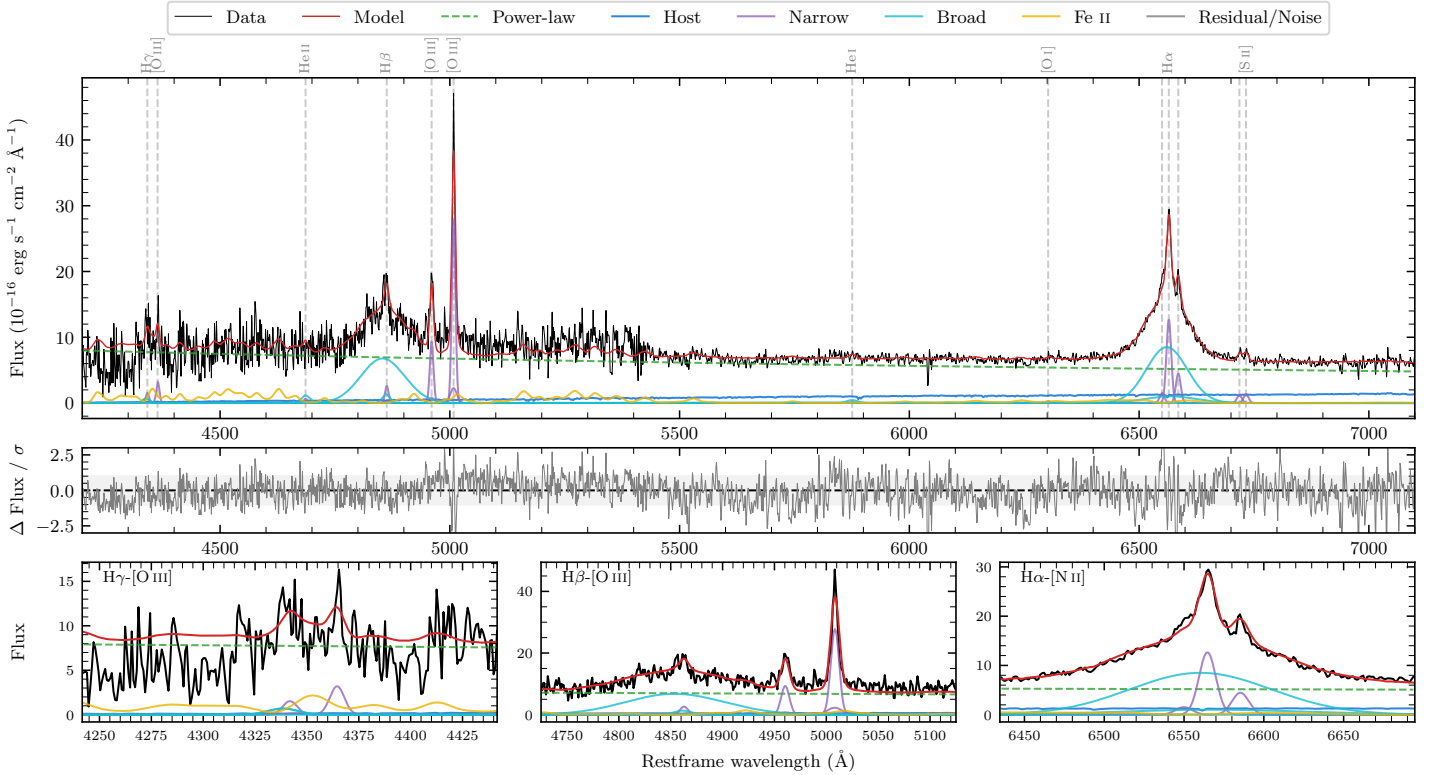
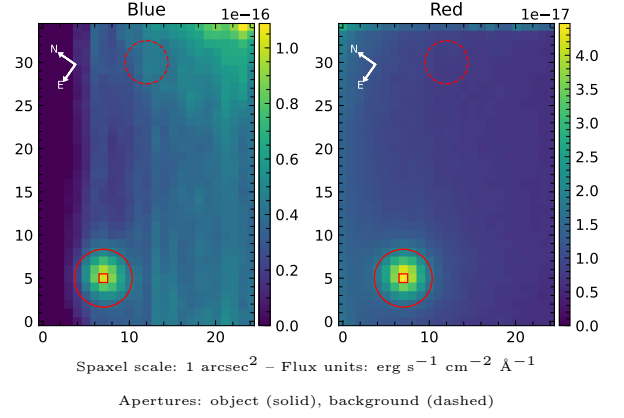


LEDA 74977

Spectrum ID	17326535_sp1	Spectrum type	Bad
Alt name	g0345125-393429	Quality flag	bad_blue
z	0.0429	AGN reference	6dFGS
RA, Dec	56.3022, -39.5748	MW $E(B-V)$	0.016
MJD	59193.5	Power law α_ν	-1.03 ± 0.19
SNR/ \AA B/R	3.8/13.3	$\log L_{5100, \text{AGN}}$	43.16 ± 0.01
Obs airmass	1.02	$\log H\beta_{\text{Br}}/[\text{O III}]$	0.42 ± 0.03
SMSS ID	17326535	$\log M_{L5100}/M_\odot$	8.10 ± 0.10
Neighbour	None $< 15''$	$\log M_{H\alpha}/M_\odot$	7.69 ± 0.02
SMSS $\langle r_6''_{\text{ap}} \rangle$	14.98 ± 0.05	$\log M_{H\beta}/M_\odot$	8.20 ± 0.10
2MASS K_{ext}	10.85 ± 0.03	$\log M_{[\text{O III}]} / M_\odot$	8.14 ± 0.10



Emission Line Measurements

Line	$\log L$ (erg s ⁻¹)	FWHM (km s ⁻¹)	σ (km s ⁻¹)	EW (Å)
H γ Narrow	39.84 ± 0.40	583 ± 64	268 ± 33	2.06 ± 1.47
Hγ Broad	—	—	—	—
[O III] 4364	40.10 ± 0.22	567 ± 63	240 ± 25	3.81 ± 1.19
He II Narrow	—	—	—	—
He II Broad	40.07 ± 0.31	1368 ± 64	581 ± 26	3.85 ± 1.61
H β Narrow	40.12 ± 0.26	583 ± 64	268 ± 33	4.40 ± 1.29
Hβ Broad	41.57 ± 0.02	5997 ± 706	2489 ± 41	125.20 ± 3.69
[O III] 5007	41.16 ± 0.02	583 ± 64	269 ± 33	49.63 ± 1.33
He I Narrow	38.90 ± 0.52	567 ± 63	240 ± 25	0.33 ± 0.30
He I Broad	39.77 ± 0.19	1408 ± 65	598 ± 26	2.37 ± 0.49
[O I] 6300	39.17 ± 0.35	567 ± 63	240 ± 25	0.65 ± 0.32
H α Narrow	40.87 ± 0.01	567 ± 63	240 ± 25	33.72 ± 0.41
Hα Broad	41.69 ± 0.01	4869 ± 83	1835 ± 37	218.88 ± 1.33
[N II] 6585	40.42 ± 0.03	567 ± 63	240 ± 25	11.97 ± 0.75
[S II] 6718	39.85 ± 0.08	567 ± 63	240 ± 25	3.29 ± 0.36
[S II] 6732	39.91 ± 0.07	567 ± 63	240 ± 25	3.81 ± 0.36

Emission Summary

H α broad SNR	4.83
H β broad SNR	4.12
H γ broad SNR	0.95
AGN frac	0.92
Host frac	0.08
$\log L_{5100, \text{Host}}$	42.09
Fe II/H β	0.46
Fe II/[O III]	1.20

Quality Flags

spurious_hab/hbb	0/0
15100	0
balmer	0
balmer_snr	2
hb_width	0
balmer_width	0