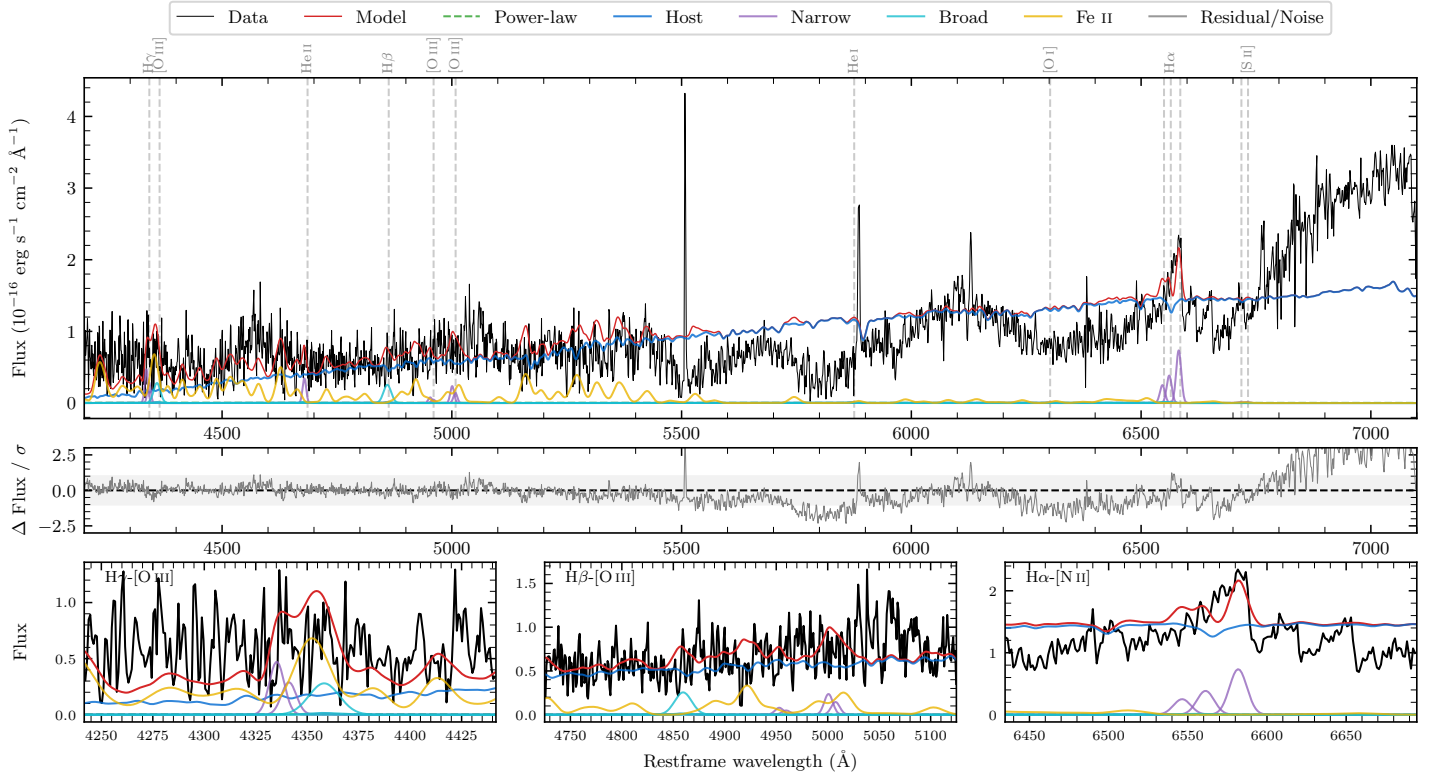
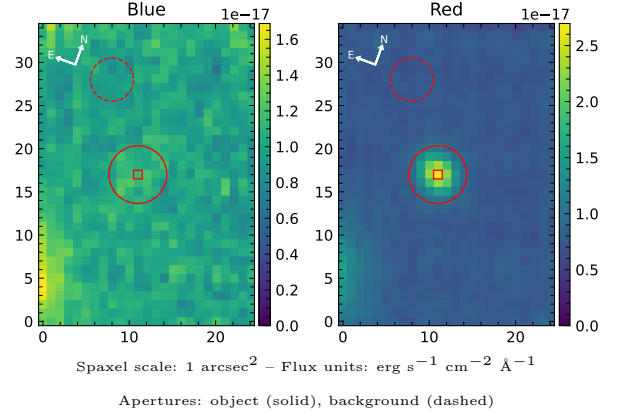


# LEDA 199033

Spectrum ID	17242600_sp1	Spectrum type	Bad
Alt name	g0307393-292306	Quality flag	bad_all
$z$	0.0707	AGN reference	6dFGS
RA, Dec	46.9136, -29.3851	MW $E(B - V)$	0.013
MJD	60224.61	Power law $\alpha_\nu$	$-0.38 \pm 0.03$
SNR/ $\text{\AA}$ B/R	0.7/2.7	$\log L_{5100, \text{AGN}}$	$40.33 \pm 0.86$
Obs airmass	1.05	$\log H\beta_{\text{Br}}/[\text{O III}]$	—
SMSS ID	17242600	$\log M_{L5100}/M_\odot$	—
Neighbour	13.9", 2034507678	$\log M_{\text{H}\alpha}/M_\odot$	—
SMSS $\langle r_6^{\text{ap}} \rangle$	$16.83 \pm 0.04$	$\log M_{\text{H}\beta}/M_\odot$	—
2MASS $K_{\text{ext}}$	$12.72 \pm 0.13$	$\log M_{[\text{O III}]} / M_\odot$	—



## Emission Line Measurements

Line	$\log L$ (erg s <sup>-1</sup> )	FWHM (km s <sup>-1</sup> )	$\sigma$ (km s <sup>-1</sup> )	EW (Å)
H $\gamma$ Narrow	$39.97 \pm 0.12$	$811 \pm 97$	$319 \pm 27$	$1665.32 \pm 813.24$
<b>H<math>\gamma</math> Broad</b>	—	—	—	—
[O III] 4364	—	—	—	—
He II Narrow	$39.64 \pm 0.14$	$589 \pm 62$	$250 \pm 25$	$920.45 \pm 702.86$
<b>He II Broad</b>	—	—	—	—
H $\beta$ Narrow	—	—	—	—
<b>H<math>\beta</math> Broad</b>	—	—	—	—
[O III] 5007	$39.71 \pm 0.17$	$811 \pm 97$	$319 \pm 27$	$1215.44 \pm 851.08$
He I Narrow	—	—	—	—
<b>He I Broad</b>	—	—	—	—
[O I] 6300	—	—	—	—
H $\alpha$ Narrow	$39.84 \pm 0.11$	$589 \pm 62$	$250 \pm 25$	$2492.17 \pm 816.07$
<b>H<math>\alpha</math> Broad</b>	—	—	—	—
[N II] 6585	$40.12 \pm 0.06$	$589 \pm 62$	$250 \pm 25$	$4798.86 \pm 879.29$
[S II] 6718	—	—	—	—
[S II] 6732	—	—	—	—

## Emission Summary

H $\alpha$ broad SNR	0.00
H $\beta$ broad SNR	0.00
H $\gamma$ broad SNR	0.00
AGN frac	0.01
Host frac	0.99
$\log L_{5100, \text{Host}}$	42.59
Fe II/H $\beta$	—
Fe II/[O III]	—

## Quality Flags

spurious_hab/hbb	0/0
15100	2
balmer	2
balmer_snr	2
hb_width	2
balmer_width	2