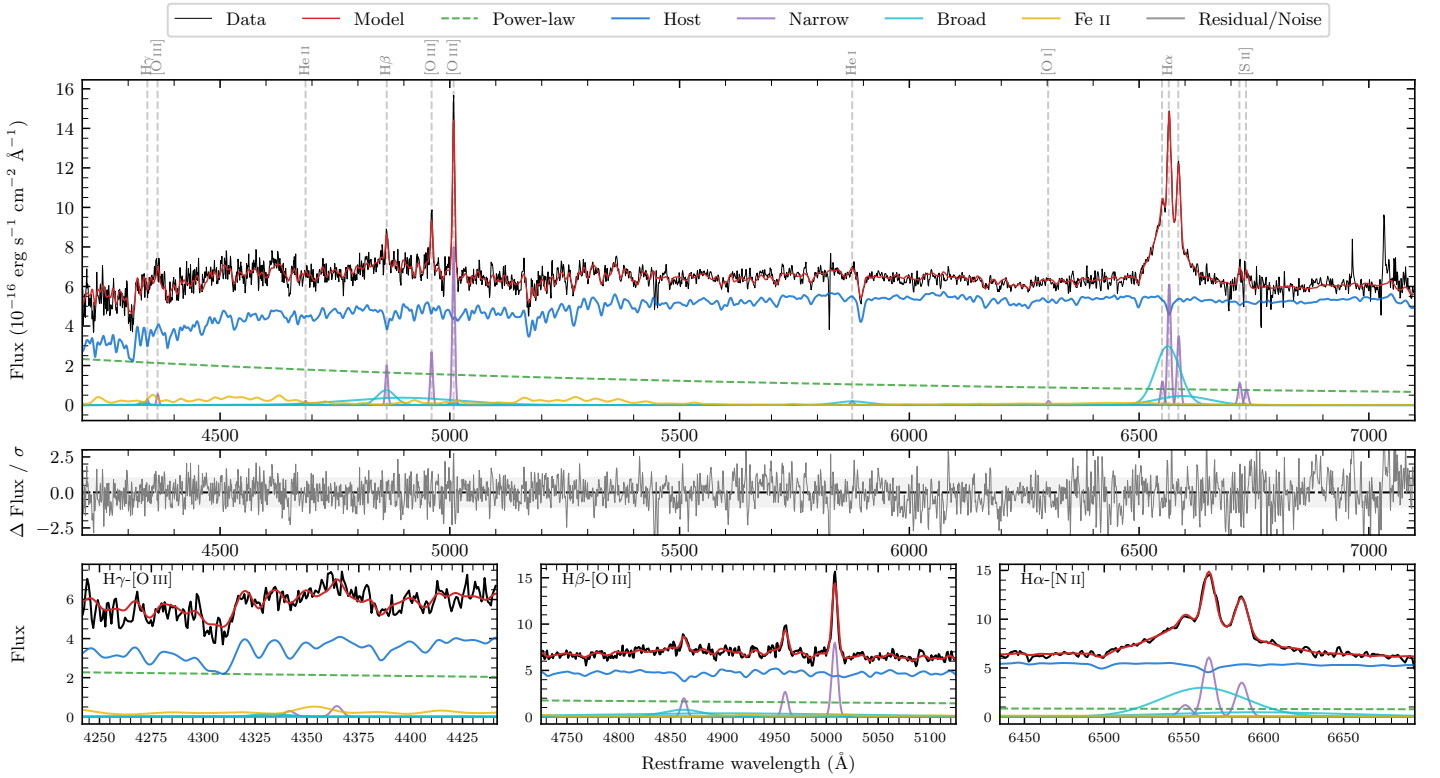
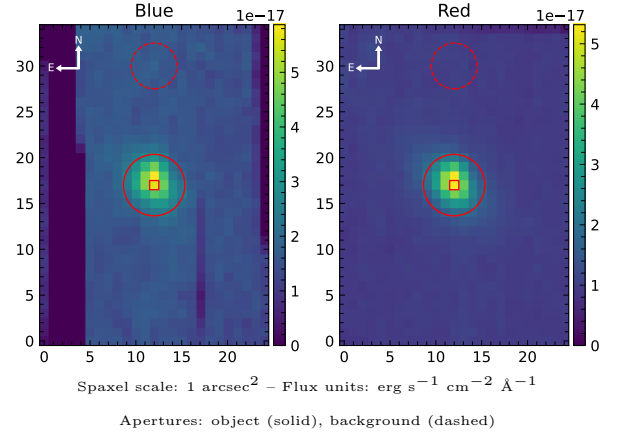


LEDA 632834

Spectrum ID	17170606_sp1	Spectrum type	Sy 1.5
Alt name	g0329498-364609	Quality flag	good
z	0.0817	AGN reference	6dFGS
RA, Dec	52.4576, -36.7691	MW $E(B-V)$	0.011
MJD	60255.6	Power law α_ν	0.38 ± 0.12
SNR/ \AA B/R	16.7/30.4	$\log L_{5100, \text{AGN}}$	43.09 ± 0.04
Obs airmass	1.02	$\log H\beta_{\text{Br}}/[\text{O III}]$	-0.21 ± 0.34
SMSS ID	17170606	$\log M_{L5100}/M_\odot$	7.42 ± 0.03
Neighbour	None $< 15''$	$\log M_{H\alpha}/M_\odot$	7.29 ± 0.02
SMSS $\langle r_6''_{\text{ap}} \rangle$	16.68 ± 0.05	$\log M_{H\beta}/M_\odot$	7.20 ± 0.17
2MASS K_{ext}	13.15 ± 0.14	$\log M_{[\text{O III}]} / M_\odot$	7.43 ± 0.03



Emission Line Measurements

Line	$\log L$ (erg s ⁻¹)	FWHM (km s ⁻¹)	σ (km s ⁻¹)	EW (Å)
H γ Narrow	39.53 ± 0.37	404 ± 63	201 ± 36	0.95 ± 0.91
Hγ Broad	—	—	—	—
[O III] 4364	39.78 ± 0.24	401 ± 63	170 ± 25	1.73 ± 0.59
He II Narrow	39.40 ± 0.39	401 ± 63	170 ± 25	0.86 ± 0.55
He II Broad	—	—	—	—
H β Narrow	40.41 ± 0.06	404 ± 63	202 ± 36	9.48 ± 1.05
Hβ Broad	$40.82^{+0.61}_{-0.07}$	2832 ± 27	1038 ± 25	24.32 ± 1.71
[O III] 5007	41.03 ± 0.02	404 ± 63	202 ± 36	41.86 ± 1.23
He I Narrow	39.50 ± 0.26	401 ± 63	170 ± 25	1.82 ± 0.67
He I Broad	40.49 ± 0.10	4356 ± 66	1850 ± 26	17.76 ± 2.15
[O I] 6300	39.53 ± 0.19	401 ± 63	170 ± 25	2.30 ± 0.70
H α Narrow	41.01 ± 0.01	401 ± 63	170 ± 25	76.37 ± 0.90
Hα Broad	41.68 ± 0.01	3104 ± 72	1310 ± 37	356.76 ± 3.70
[N II] 6585	40.77 ± 0.02	401 ± 63	170 ± 25	44.46 ± 0.88
[S II] 6718	40.27 ± 0.04	401 ± 63	170 ± 25	15.02 ± 1.20
[S II] 6732	40.14 ± 0.08	401 ± 63	170 ± 25	10.99 ± 1.23

Emission Summary

H α broad SNR	8.79
H β broad SNR	1.97
H γ broad SNR	0.81
AGN frac	0.24
Host frac	0.76
$\log L_{5100, \text{Host}}$	43.59
Fe II/H β	—
Fe II/[O III]	—

Quality Flags

spurious_hab/hbb	0/1
15100	2
balmer	1
balmer_snr	2
hb_width	0
balmer_width	1