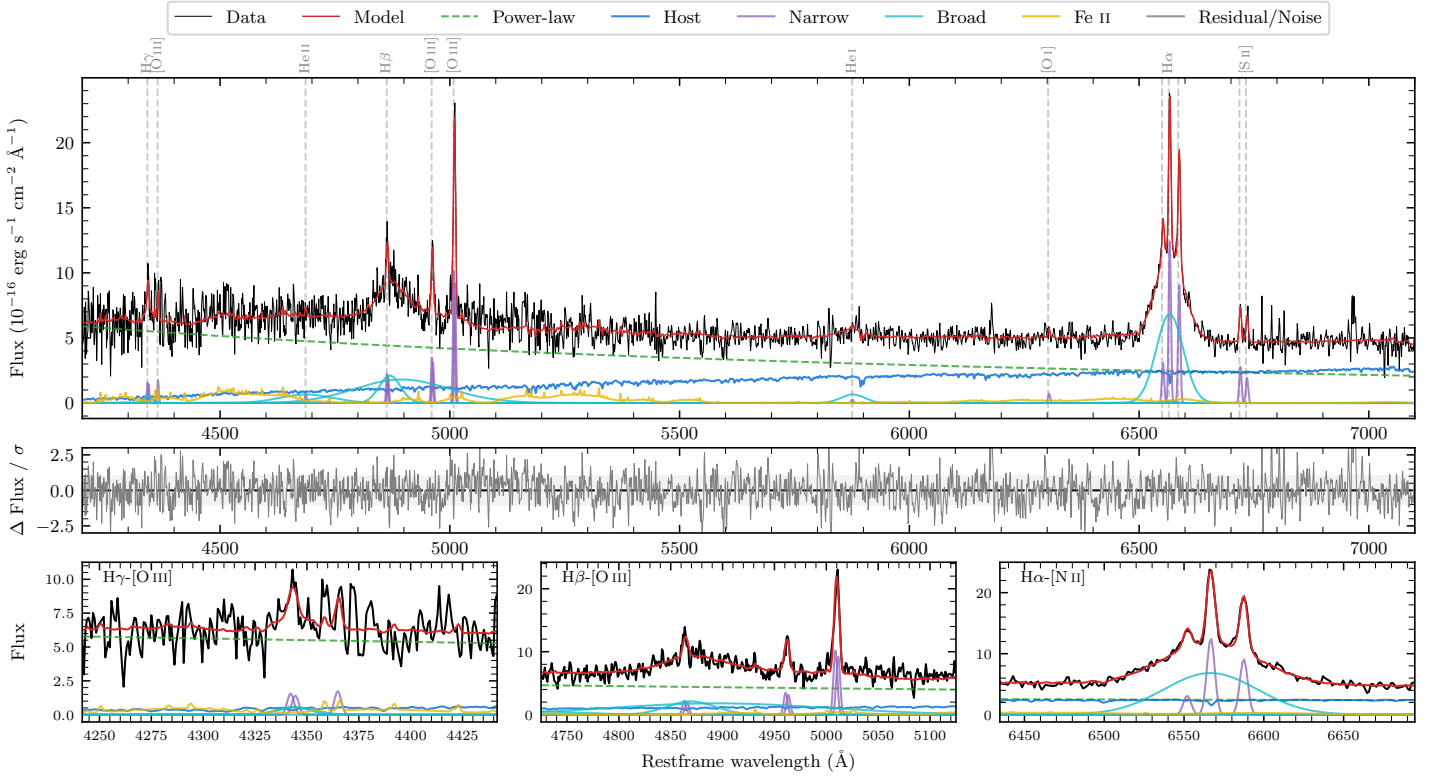
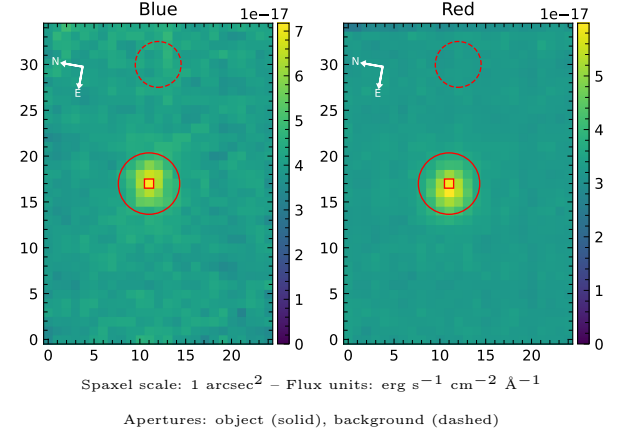


6dFGS gJ155703.2–074134

Spectrum ID	169906444_sp1	Spectrum type	Sy 1.0
Alt name	g1557032–074134	Quality flag	good
z	0.0816	AGN reference	6dFGS
RA, Dec	239.2633, –7.6927	MW $E(B - V)$	0.151
MJD	60077.68	Power law α_ν	-0.03 ± 0.20
SNR/Å B/R	6.8/9.3	$\log L_{5100, \text{AGN}}$	43.53 ± 0.03
Obs airmass	1.19	$\log H\beta_{\text{Br}}/[\text{O III}]$	0.80 ± 0.03
SMSS ID	169906444	$\log M_{L5100}/M_\odot$	8.21 ± 0.10
Neighbour	None $< 15''$	$\log M_{\text{H}\alpha}/M_\odot$	7.46 ± 0.02
SMSS $\langle r_6''_{\text{ap}} \rangle$	16.33 ± 0.04	$\log M_{\text{H}\beta}/M_\odot$	8.35 ± 0.10
2MASS K_{ext}	12.77 ± 0.10	$\log M_{[\text{O III}]} / M_\odot$	8.12 ± 0.10



Emission Line Measurements

Line	$\log L$ (erg s ⁻¹)	FWHM (km s ⁻¹)	σ (km s ⁻¹)	EW (Å)
H γ Narrow	40.33 ± 0.18	349 ± 64	137 ± 25	2.38 ± 0.44
Hγ Broad	40.69 ± 0.16	1343 ± 113	514 ± 39	4.49 ± 0.97
[O III] 4364	40.10 ± 0.21	265 ± 63	112 ± 25	1.41 ± 0.42
He II Narrow	39.75 ± 0.35	265 ± 63	112 ± 25	0.73 ± 0.43
He II Broad	41.22 ± 0.09	8591 ± 66	3648 ± 27	21.41 ± 2.62
H β Narrow	40.54 ± 0.09	349 ± 64	137 ± 25	4.82 ± 0.49
Hβ Broad	42.02 ± 0.02	5662 ± 600	4458 ± 85	145.83 ± 3.95
[O III] 5007	41.22 ± 0.02	349 ± 64	137 ± 25	24.08 ± 0.58
He I Narrow	39.44 ± 0.42	265 ± 63	112 ± 25	0.56 ± 0.44
He I Broad	40.88 ± 0.08	3057 ± 71	1298 ± 29	15.11 ± 1.62
[O I] 6300	39.87 ± 0.19	265 ± 63	112 ± 25	1.72 ± 0.48
H α Narrow	41.13 ± 0.02	265 ± 63	112 ± 25	34.00 ± 0.60
Hα Broad	41.95 ± 0.01	3101 ± 81	1147 ± 25	223.98 ± 2.13
[N II] 6585	41.00 ± 0.02	265 ± 63	112 ± 25	24.88 ± 0.60
[S II] 6718	40.49 ± 0.05	265 ± 63	112 ± 25	8.09 ± 0.73
[S II] 6732	40.34 ± 0.08	265 ± 63	112 ± 25	5.73 ± 0.77

Emission Summary

H α broad SNR	7.51
H β broad SNR	4.15
H γ broad SNR	1.40
AGN frac	0.77
Host frac	0.23
$\log L_{5100, \text{Host}}$	43.00
Fe II/H β	0.33
Fe II/[O III]	2.08

Quality Flags

spurious_hab/hbb	0/0
15100	0
balmer	2
balmer_snr	1
hb_width	2
balmer_width	1