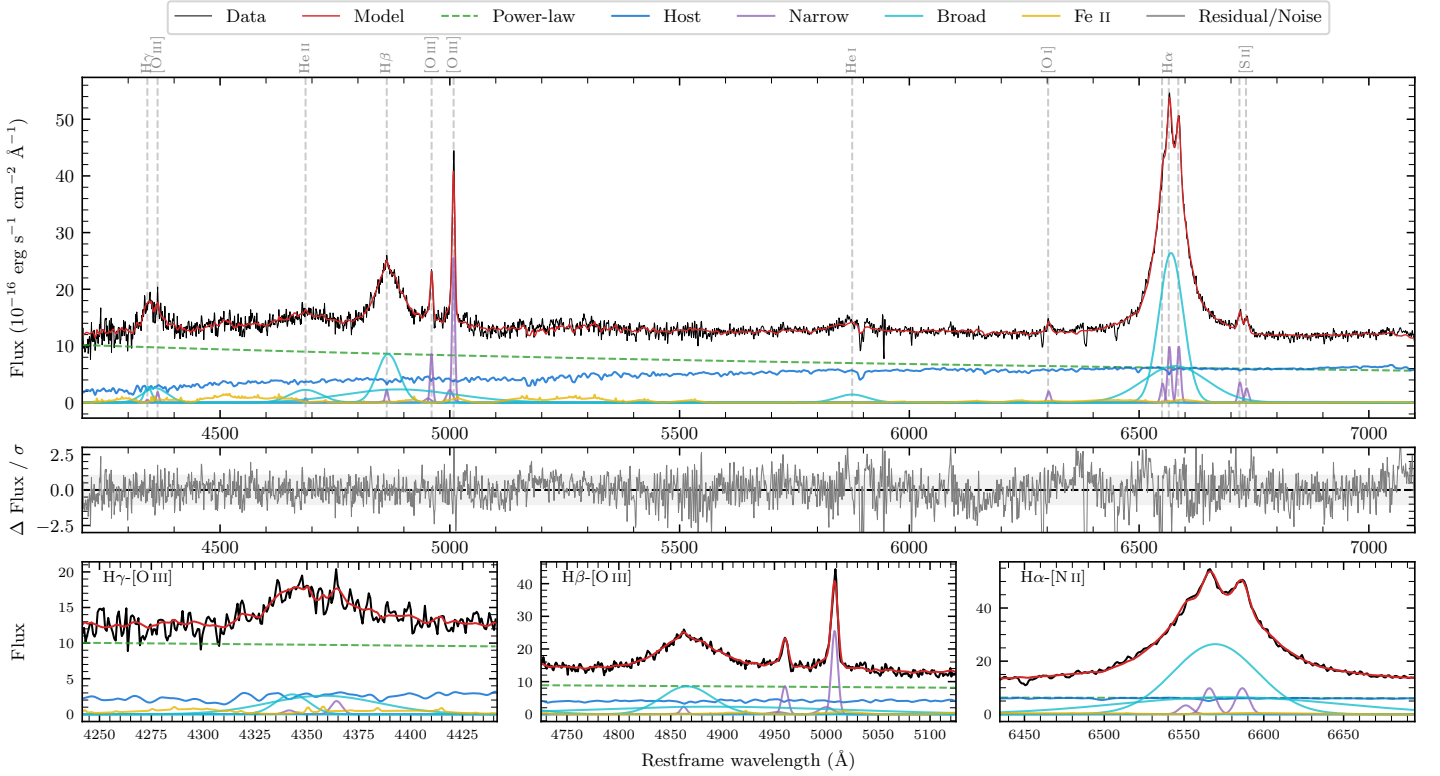
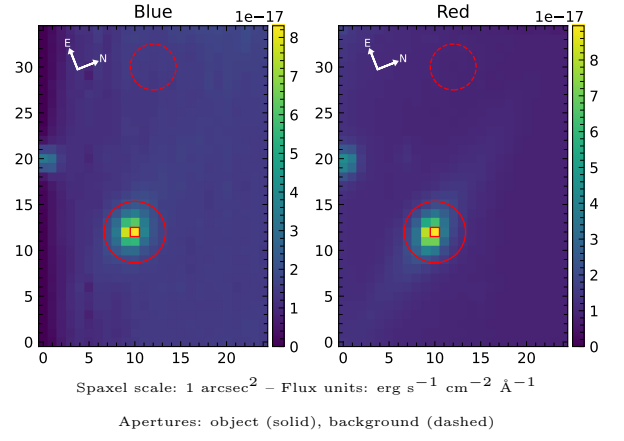


NVSS J160445-103326

Spectrum ID	169841662_sp1	Spectrum Type	Sy 1.2
Alt name	g1604459-103326	Quality Flag	good
z	0.0601	AGN reference	6dFGS
RA, Dec	241.1912, -10.5573	MW $E(B - V)$	0.237
MJD	59397.48	Power law α_ν	-0.88 ± 0.12
SNR/ \AA B/R	12.5/25.5	$\log L_{5100, \text{AGN}}$	43.56 ± 0.02
Obs Airmass	1.07	$\log H\beta_{\text{Br}}/[\text{O III}]$	0.35 ± 0.20
SMSS ID	169841662	$\log M_{L5100}/M_\odot$	7.81 ± 0.02
Closest SMSS	11.77", 169841663	$\log M_{\text{H}\alpha}/M_\odot$	7.78 ± 0.02
SMSS Mean r_{psf}	16.6 ± 0.0	$\log M_{\text{H}\beta}/M_\odot$	7.79 ± 0.10
2MASS K_{ext}	12.3 ± 0.1	$\log M_{[\text{O III}]} / M_\odot$	7.77 ± 0.03



Emission Line Measurements

Line	$\log L$ (erg s $^{-1}$)	FWHM (km s $^{-1}$)	σ (km s $^{-1}$)	EW (\AA)
H γ Narrow	—	—	—	—
Hγ Broad	41.34 ± 0.04	2551 ± 620	1305 ± 66	25.05 ± 1.17
[O III] 4364	40.06 ± 0.20	434 ± 63	184 ± 25	1.36 ± 0.36
He II Narrow	39.74 ± 0.29	434 ± 63	184 ± 25	0.70 ± 0.33
He II Broad	—	—	—	—
H β Narrow	40.28 ± 0.12	450 ± 63	291 ± 34	2.54 ± 0.49
Hβ Broad	$41.68^{+0.37}_{-0.02}$	3547 ± 88	1312 ± 38	64.61 ± 1.05
[O III] 5007	41.33 ± 0.01	450 ± 63	291 ± 34	29.77 ± 0.53
He I Narrow	—	—	—	—
He I Broad	41.06 ± 0.03	4147 ± 123	1761 ± 52	18.75 ± 0.86
[O I] 6300	40.24 ± 0.05	434 ± 63	184 ± 25	3.14 ± 0.25
H α Narrow	40.96 ± 0.02	434 ± 63	184 ± 25	17.18 ± 0.34
Hα Broad	42.42 ± 0.01	3217 ± 66	1529 ± 25	494.37 ± 1.21
[N II] 6585	40.96 ± 0.02	434 ± 63	184 ± 25	17.31 ± 0.33
[S II] 6718	40.53 ± 0.03	434 ± 63	184 ± 25	6.51 ± 0.27
[S II] 6732	40.39 ± 0.04	434 ± 63	184 ± 25	4.70 ± 0.26

Emission Summary

H α Broad SNR	31.22
H β Broad SNR	8.15
H γ Broad SNR	4.79
AGN frac	0.67
Host frac	0.33
$\log L_{5100, \text{Host}}$	43.25
Fe II/H β	—
Fe II/[O III]	—

Quality Flags

spurious_hab/hbb	0/1
15100	0
balmer	0
balmer_snr	0
hb_width	0
balmer_width	0