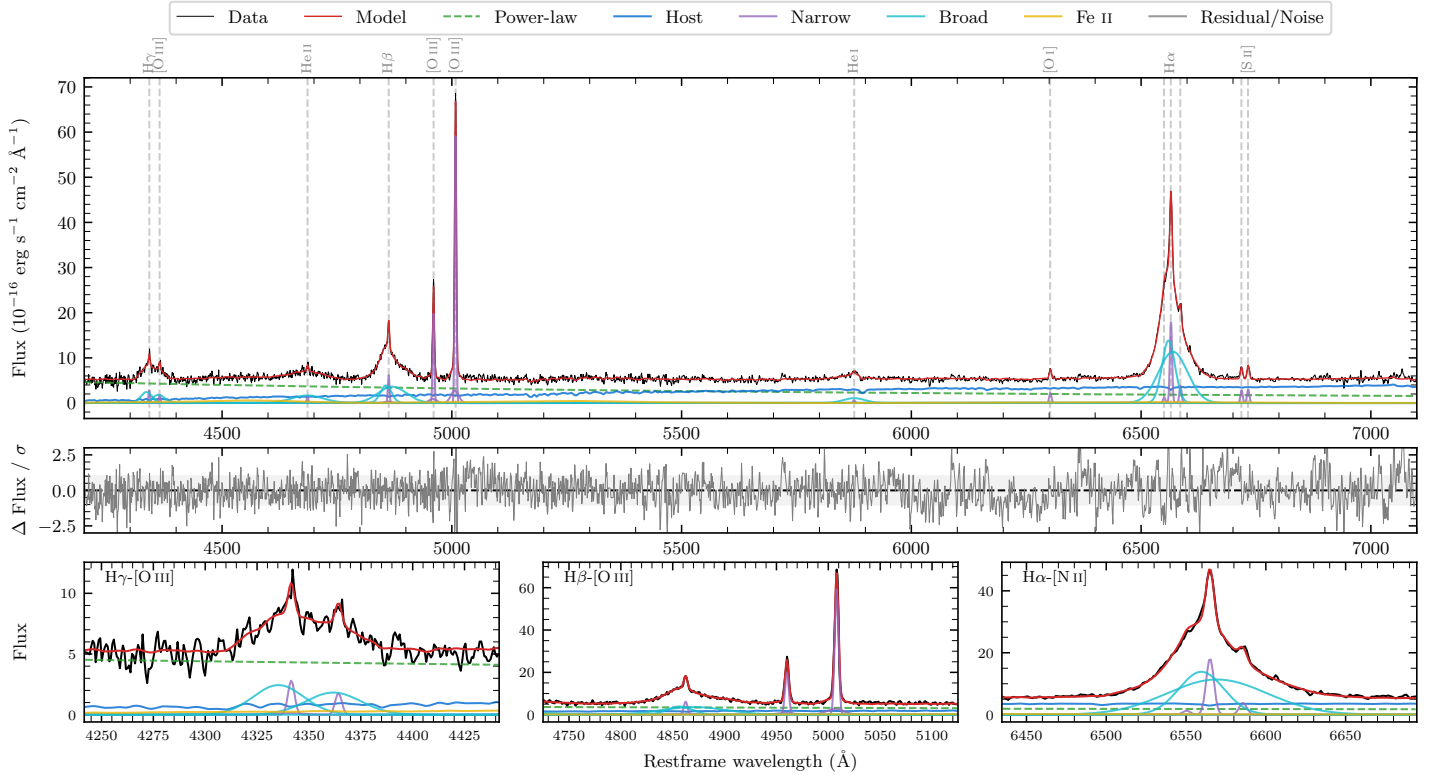
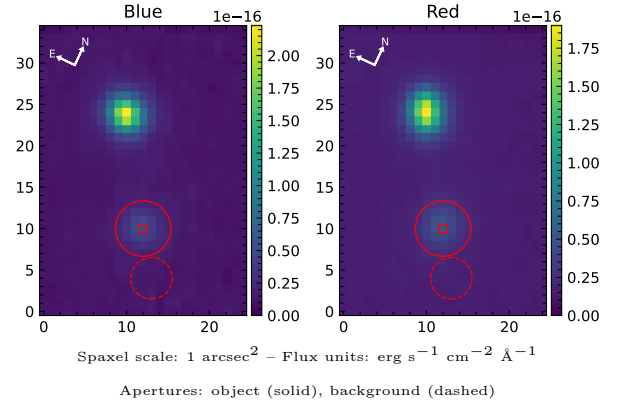


LEDA 3096689

Spectrum ID	1690440_sp1	Spectrum type	Sy 1.5
Alt name	g2234409-370644	Quality flag	good
z	0.0432	AGN reference	6dFGS
RA, Dec	338.6707, -37.1122	MW $E(B-V)$	0.011
MJD	60114.8	Power law α_ν	0.06 ± 0.20
SNR/ \AA B/R	9.8/16.2	$\log L_{5100, \text{AGN}}$	42.84 ± 0.03
Obs airmass	1.01	$\log H\beta_{\text{Br}}/[\text{O III}]$	0.08 ± 0.01
SMSS ID	1690440	$\log M_{L5100}/M_\odot$	7.28 ± 0.05
Neighbour	13.6", 1690441	$\log M_{\text{H}\alpha}/M_\odot$	7.03 ± 0.03
SMSS $\langle r_6''_{\text{ap}} \rangle$	16.39 ± 0.08	$\log M_{\text{H}\beta}/M_\odot$	7.37 ± 0.05
2MASS K_{ext}	12.74 ± 0.08	$\log M_{[\text{O III}]} / M_\odot$	7.47 ± 0.05



Emission Line Measurements

Line	$\log L$ (erg s^{-1})	FWHM (km s^{-1})	σ (km s^{-1})	EW (\AA)
H γ Narrow	39.79 ± 0.09	268 ± 63	233 ± 26	3.27 ± 0.64
Hγ Broad	40.79 ± 0.03	3440 ± 200	1137 ± 43	32.71 ± 1.00
[O III] 4364	39.51 ± 0.13	260 ± 63	109 ± 25	1.73 ± 0.31
He II Narrow	39.46 ± 0.12	260 ± 63	109 ± 25	1.80 ± 0.32
He II Broad	40.82 ± 0.03	5215 ± 202	2215 ± 85	41.31 ± 1.54
H β Narrow	40.18 ± 0.03	268 ± 63	233 ± 26	10.24 ± 0.69
Hβ Broad	41.26 ± 0.01	2731 ± 132	1349 ± 38	121.55 ± 1.48
[O III] 5007	41.18 ± 0.01	268 ± 63	233 ± 26	106.73 ± 0.85
He I Narrow	39.21 ± 0.16	260 ± 63	109 ± 25	1.60 ± 0.33
He I Broad	40.46 ± 0.03	2802 ± 162	1189 ± 68	28.59 ± 1.13
[O I] 6300	39.77 ± 0.04	260 ± 63	109 ± 25	6.69 ± 0.45
H α Narrow	40.70 ± 0.01	260 ± 63	109 ± 25	62.23 ± 0.72
Hα Broad	41.80 ± 0.01	2106 ± 67	969 ± 25	785.95 ± 2.03
[N II] 6585	40.02 ± 0.04	260 ± 63	109 ± 25	13.13 ± 0.73
[S II] 6718	39.90 ± 0.03	260 ± 63	109 ± 25	10.41 ± 0.50
[S II] 6732	39.93 ± 0.02	260 ± 63	109 ± 25	11.20 ± 0.46

Emission Summary

H α broad SNR	41.62
H β broad SNR	12.13
H γ broad SNR	4.66
AGN frac	0.63
Host frac	0.37
$\log L_{5100, \text{Host}}$	42.60
Fe II/H β	0.36
Fe II/[O III]	0.44

Quality Flags

spurious_hab/hbb	0/0
15100	0
balmer	0
balmer_snr	0
hb_width	0
balmer_width	0