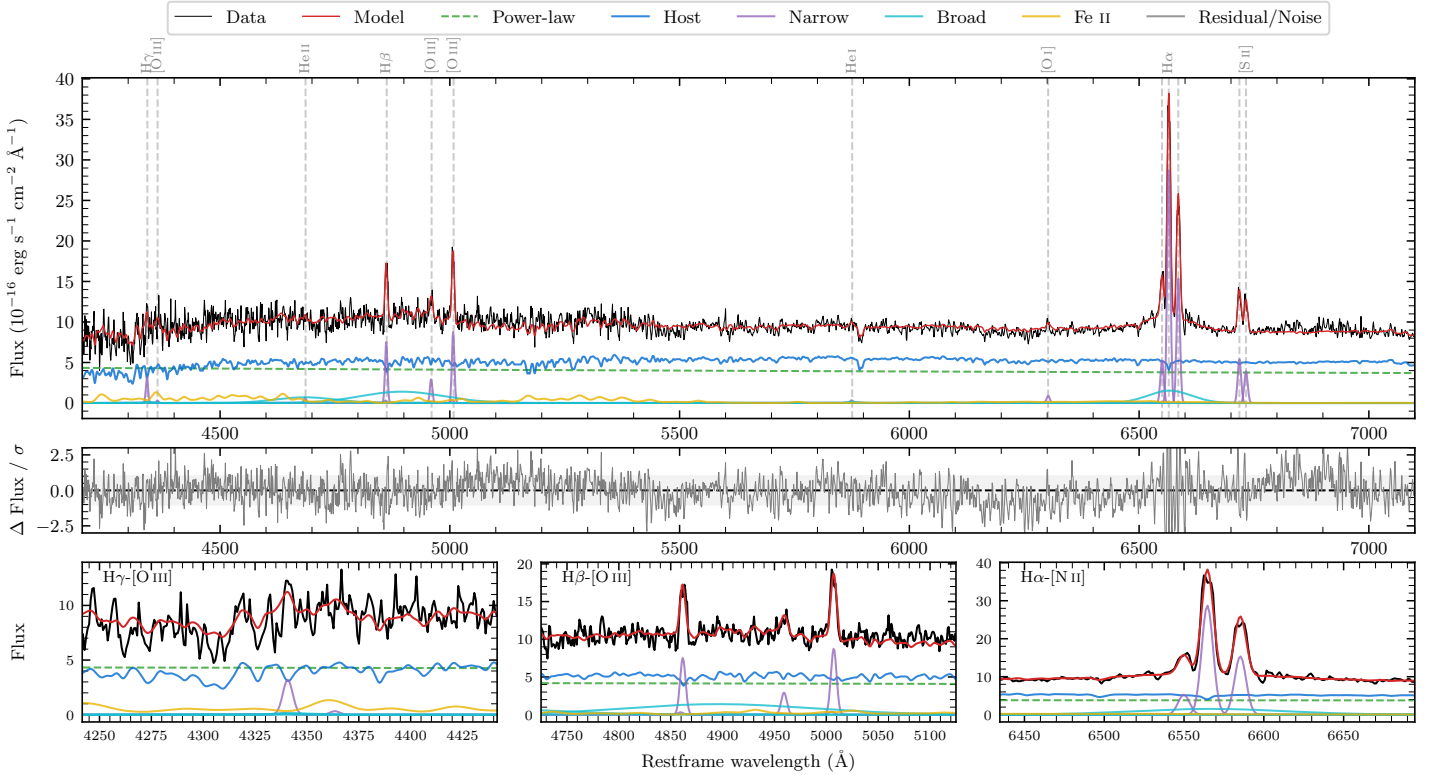
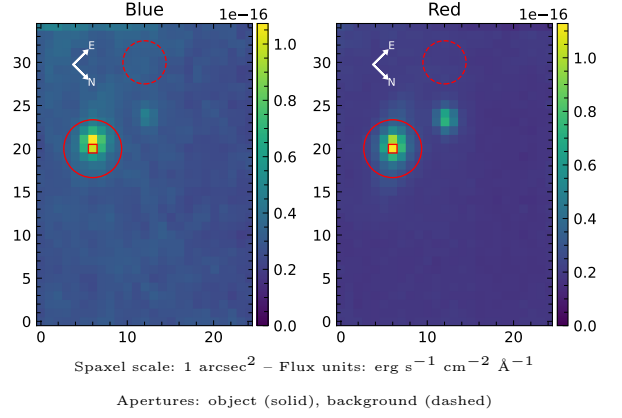


LEDA 3093383

Spectrum ID	168937318_sp1	Spectrum type	Sy 1.5+
Alt name	g1523356-104840	Quality flag	good
z	0.0513	AGN reference	6dFGS
RA, Dec	230.8984, -10.8113	MW $E(B-V)$	0.117
MJD	61113.72	Power law α_ν	-1.70 ± 0.06
SNR/ \AA B/R	9.9/18.7	$\log L_{5100, \text{AGN}}$	43.12 ± 0.02
Obs airmass	1.08	$\log H\beta_{\text{Br}}/[\text{O III}]$	< 0.20
SMSS ID	168937318	$\log M_{L5100}/M_\odot$	—
Neighbour	6.9", 168937319	$\log M_{\text{H}\alpha}/M_\odot$	7.34 ± 0.05
SMSS $\langle r_{6''}^{\text{ap}} \rangle$	16.33 ± 0.06	$\log M_{\text{H}\beta}/M_\odot$	—
2MASS K_{ext}	12.44 ± 0.09	$\log M_{[\text{O III}]} / M_\odot$	—



Emission Line Measurements

Line	$\log L$ (erg s^{-1})	FWHM (km s^{-1})	σ (km s^{-1})	EW (\AA)
H γ Narrow	40.13 ± 0.12	391 ± 63	166 ± 25	4.86 ± 0.74
Hγ Broad	—	—	—	—
[O III] 4364	—	—	—	—
He II Narrow	39.44 ± 0.36	387 ± 62	164 ± 25	1.05 ± 0.60
He II Broad	—	—	—	—
H β Narrow	40.55 ± 0.03	391 ± 63	166 ± 25	13.24 ± 0.61
Hβ Broad	< 40.82	—	—	—
[O III] 5007	40.62 ± 0.03	391 ± 63	166 ± 25	16.02 ± 0.61
He I Narrow	39.26 ± 0.37	387 ± 62	164 ± 25	0.73 ± 0.35
He I Broad	39.47 ± 0.40	1306 ± 62	554 ± 25	1.20 ± 0.64
[O I] 6300	39.71 ± 0.12	387 ± 62	164 ± 25	2.14 ± 0.34
H α Narrow	41.23 ± 0.01	387 ± 62	164 ± 25	71.67 ± 0.50
Hα Broad	41.09 ± 0.03	4960 ± 121	1869 ± 25	50.46 ± 1.46
[N II] 6585	40.96 ± 0.01	387 ± 62	164 ± 25	38.52 ± 0.49
[S II] 6718	40.52 ± 0.02	387 ± 62	164 ± 25	13.90 ± 0.40
[S II] 6732	40.38 ± 0.03	387 ± 62	164 ± 25	10.12 ± 0.40

Emission Summary

H α broad SNR	1.64
H β broad SNR	0.00
H γ broad SNR	0.00
AGN frac	0.46
Host frac	0.54
$\log L_{5100, \text{Host}}$	43.18
Fe II/H β	—
Fe II/[O III]	—

Quality Flags

spurious_hab/hbb	0/1
15100	1
balmer	2
balmer_snr	2
hb_width	2
balmer_width	2