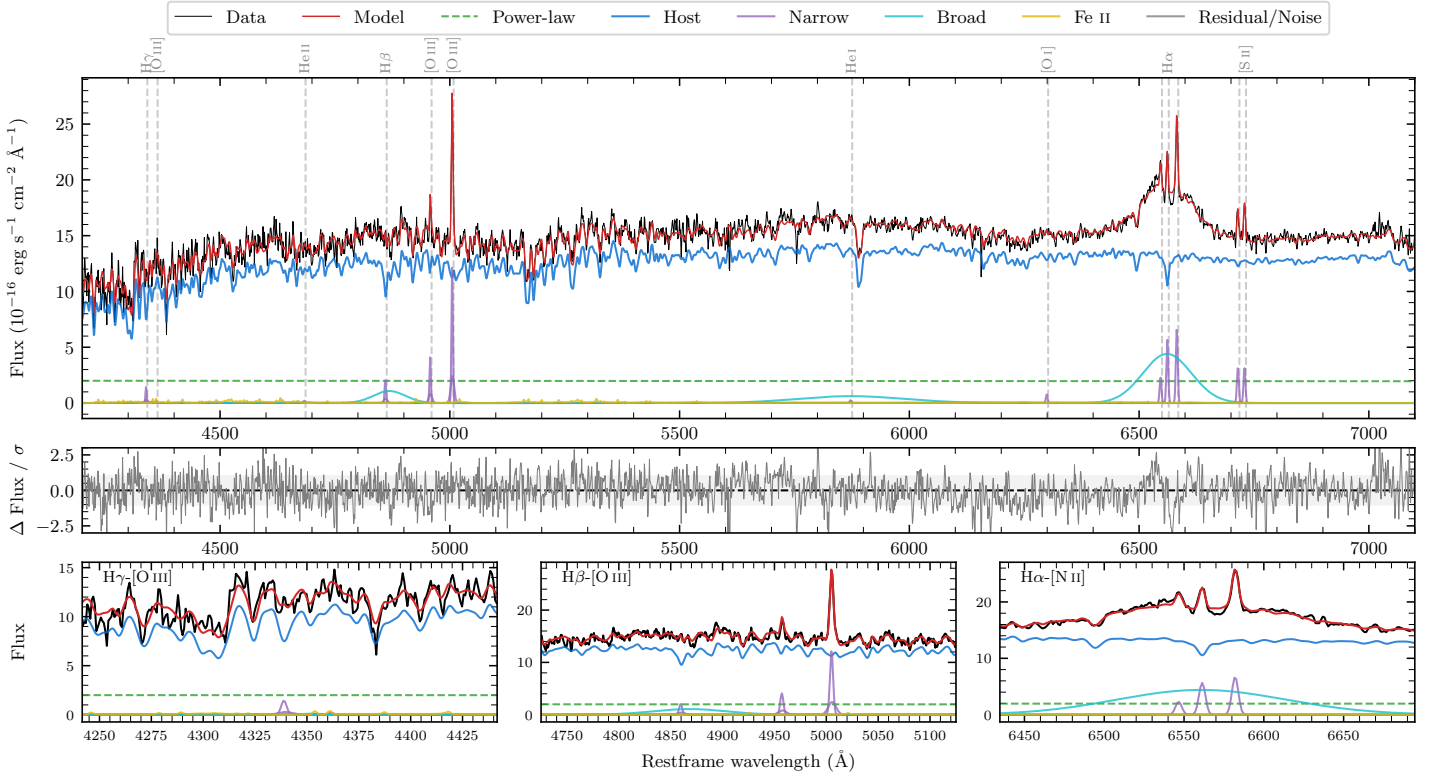
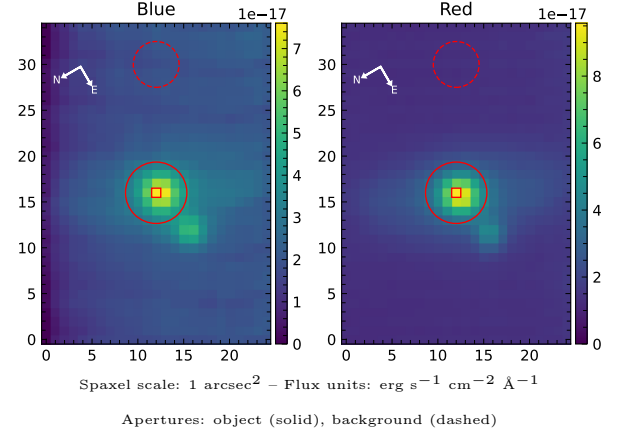


LEDA 184871

Spectrum ID	168849270_sp1	Spectrum type	Sy 1.5
Alt name	g1501395-072241	Quality flag	good
z	0.0230	AGN reference	6dFGS
RA, Dec	225.4147, -7.3779	MW $E(B - V)$	0.079
MJD	60377.77	Power law α_ν	-1.96 ± 0.04
SNR/ \AA B/R	22.2/36.7	$\log L_{5100, \text{AGN}}$	42.11 ± 0.05
Obs airmass	1.10	$\log H\beta_{\text{Br}}/[\text{O III}]$	0.14 ± 0.05
SMSS ID	168849270	$\log M_{L5100}/M_\odot$	7.47 ± 0.05
Neighbour	1.8", 2254787804	$\log M_{\text{H}\alpha}/M_\odot$	7.33 ± 0.05
SMSS $\langle r_6''_{\text{ap}} \rangle$	15.92 ± 0.02	$\log M_{\text{H}\beta}/M_\odot$	7.36 ± 0.07
2MASS K_{ext}	11.45 ± 0.09	$\log M_{[\text{O III}]} / M_\odot$	7.38 ± 0.07



Emission Line Measurements

Line	$\log L$ (erg s ⁻¹)	FWHM (km s ⁻¹)	σ (km s ⁻¹)	EW (Å)
H γ Narrow	38.97 ± 0.17	242 ± 63	150 ± 27	3.66 ± 1.09
Hγ Broad	—	—	—	—
[O III] 4364	—	—	—	—
He II Narrow	—	—	—	—
He II Broad	—	—	—	—
H β Narrow	39.17 ± 0.09	242 ± 63	150 ± 27	5.96 ± 0.89
Hβ Broad	40.09 ± 0.05	4907 ± 120	1841 ± 25	49.16 ± 2.78
[O III] 5007	39.95 ± 0.02	242 ± 63	150 ± 27	35.90 ± 0.87
He I Narrow	38.17 ± 0.42	220 ± 63	91 ± 25	0.59 ± 0.43
He I Broad	40.36 ± 0.04	13871 ± 63	5890 ± 25	92.94 ± 4.56
[O I] 6300	38.68 ± 0.17	220 ± 63	91 ± 25	1.92 ± 0.46
H α Narrow	39.56 ± 0.03	220 ± 63	91 ± 25	14.79 ± 0.46
Hα Broad	40.88 ± 0.01	5693 ± 67	2121 ± 25	305.80 ± 2.55
[N II] 6585	39.64 ± 0.02	220 ± 63	91 ± 25	17.58 ± 0.48
[S II] 6718	39.33 ± 0.05	220 ± 63	91 ± 25	8.56 ± 0.61
[S II] 6732	39.32 ± 0.05	220 ± 63	91 ± 25	8.39 ± 0.61

Emission Summary

H α broad SNR	6.66
H β broad SNR	1.73
H γ broad SNR	0.40
AGN frac	0.14
Host frac	0.86
$\log L_{5100, \text{Host}}$	42.88
Fe II/H β	0.38
Fe II/[O III]	0.52

Quality Flags

spurious_hab/hbb	0/0
15100	2
balmer	1
balmer_snr	2
hb_width	0
balmer_width	2