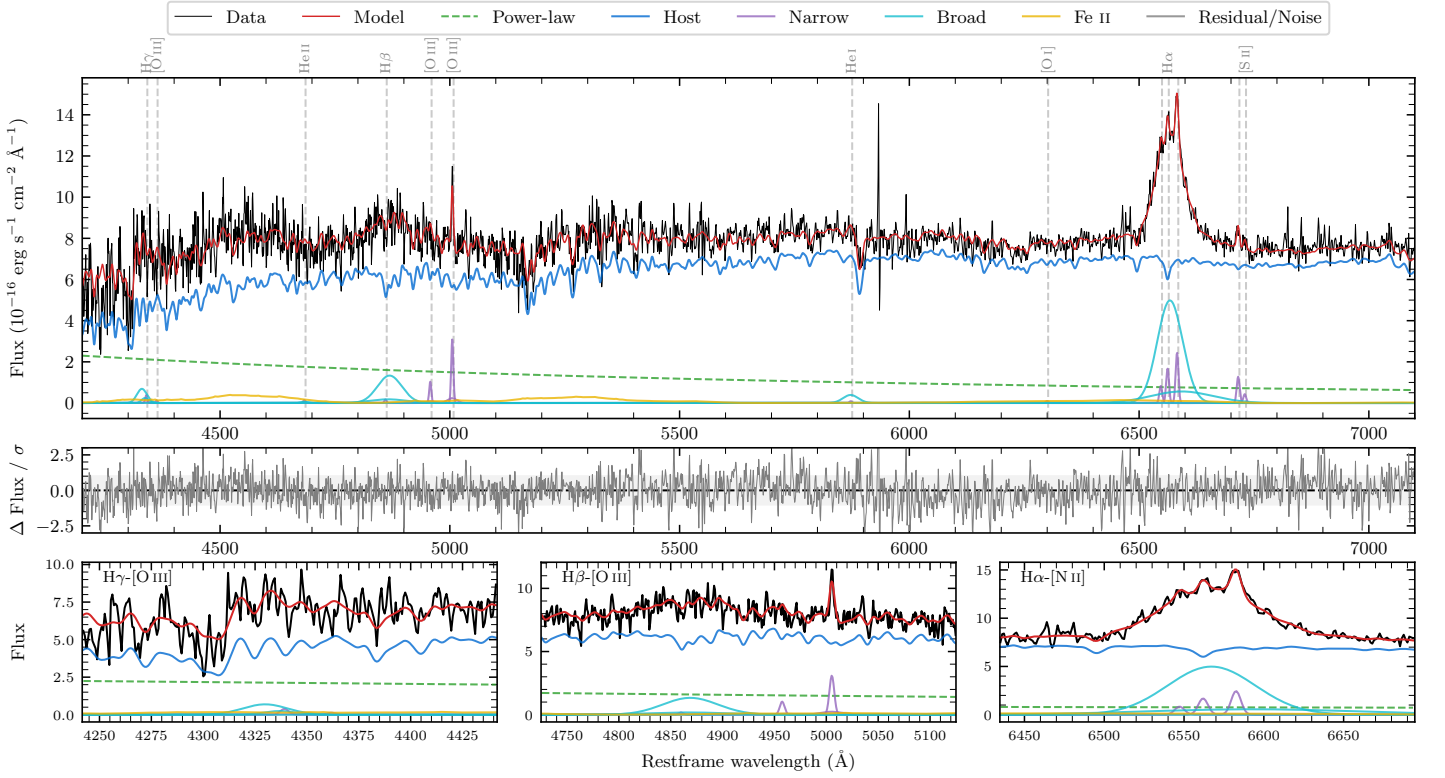
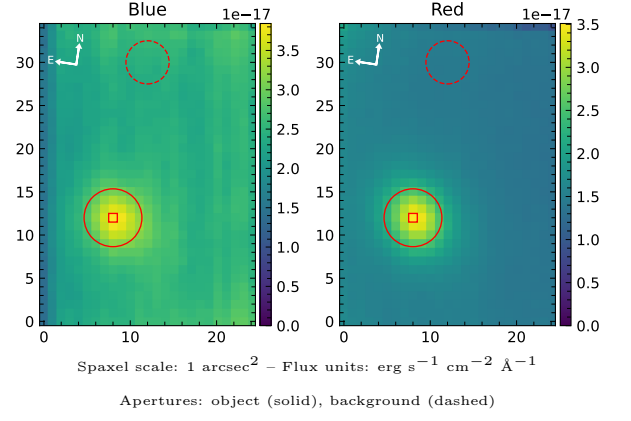


# 6dFGS gJ155625.3–202829

Spectrum ID	167632502_sp1	Spectrum type	Sy 1.2
Alt name	g1556253–202829	Quality flag	good
$z$	0.0613	AGN reference	6dFGS
RA, Dec	239.1054, –20.4746	MW $E(B - V)$	0.214
MJD	59349.54	Power law $\alpha_\nu$	$0.47 \pm 0.03$
SNR/ $\text{\AA}$ B/R	9.9/20.6	$\log L_{5100, \text{AGN}}$	$42.82 \pm 0.05$
Obs airmass	1.09	$\log H\beta_{\text{Br}}/[\text{O III}]$	$0.66 \pm 0.10$
SMSS ID	167632502	$\log M_{L5100}/M_\odot$	$7.61 \pm 0.05$
Neighbour	None $< 15''$	$\log M_{\text{H}\alpha}/M_\odot$	$7.27 \pm 0.03$
SMSS $\langle r_6'' \text{ap} \rangle$	$16.64 \pm 0.06$	$\log M_{\text{H}\beta}/M_\odot$	$7.60 \pm 0.06$
2MASS $K_{\text{ext}}$	$12.70 \pm 0.12$	$\log M_{[\text{O III}]} / M_\odot$	$7.41 \pm 0.08$



## Emission Line Measurements

Line	$\log L$ (erg s $^{-1}$ )	FWHM (km s $^{-1}$ )	$\sigma$ (km s $^{-1}$ )	EW (Å)
H $\gamma$ Narrow	–	–	–	–
<b>H<math>\gamma</math> Broad</b>	<b><math>40.38 \pm 0.14</math></b>	<b><math>1727 \pm 103</math></b>	<b><math>568 \pm 25</math></b>	<b><math>11.58 \pm 2.36</math></b>
[O III] 4364	–	–	–	–
He II Narrow	–	–	–	–
<b>He II Broad</b>	–	–	–	–
H $\beta$ Narrow	–	–	–	–
<b>H<math>\beta</math> Broad</b>	<b><math>41.03 \pm 0.05</math></b>	<b><math>4021 \pm 160</math></b>	<b><math>1529 \pm 125</math></b>	<b><math>71.26 \pm 4.66</math></b>
[O III] 5007	$40.37 \pm 0.09$	$347 \pm 64$	$322 \pm 102$	$17.08 \pm 2.48$
He I Narrow	–	–	–	–
<b>He I Broad</b>	<b><math>40.20 \pm 0.13</math></b>	<b><math>1978 \pm 62</math></b>	<b><math>840 \pm 25</math></b>	<b><math>17.10 \pm 2.77</math></b>
[O I] 6300	–	–	–	–
H $\alpha$ Narrow	$40.10 \pm 0.08$	$330 \pm 62$	$139 \pm 25$	$17.87 \pm 1.52$
<b>H<math>\alpha</math> Broad</b>	<b><math>41.63 \pm 0.01</math></b>	<b><math>3135 \pm 71</math></b>	<b><math>1320 \pm 53</math></b>	<b><math>611.58 \pm 6.95</math></b>
[N II] 6585	$40.26 \pm 0.05$	$330 \pm 62$	$139 \pm 25$	$26.26 \pm 1.48$
[S II] 6718	$39.99 \pm 0.08$	$330 \pm 62$	$139 \pm 25$	$14.69 \pm 1.43$
[S II] 6732	$39.52 \pm 0.21$	$330 \pm 62$	$139 \pm 25$	$5.01 \pm 1.38$

## Emission Summary

H $\alpha$ broad SNR	7.55
H $\beta$ broad SNR	2.10
H $\gamma$ broad SNR	1.33
AGN frac	0.19
Host frac	0.80
$\log L_{5100, \text{Host}}$	43.44
Fe II/H $\beta$	0.81
Fe II/[O III]	3.62

## Quality Flags

spurious_hab/hbb	0/0
15100	2
balmer	1
balmer_snr	1
hb_width	0
balmer_width	0