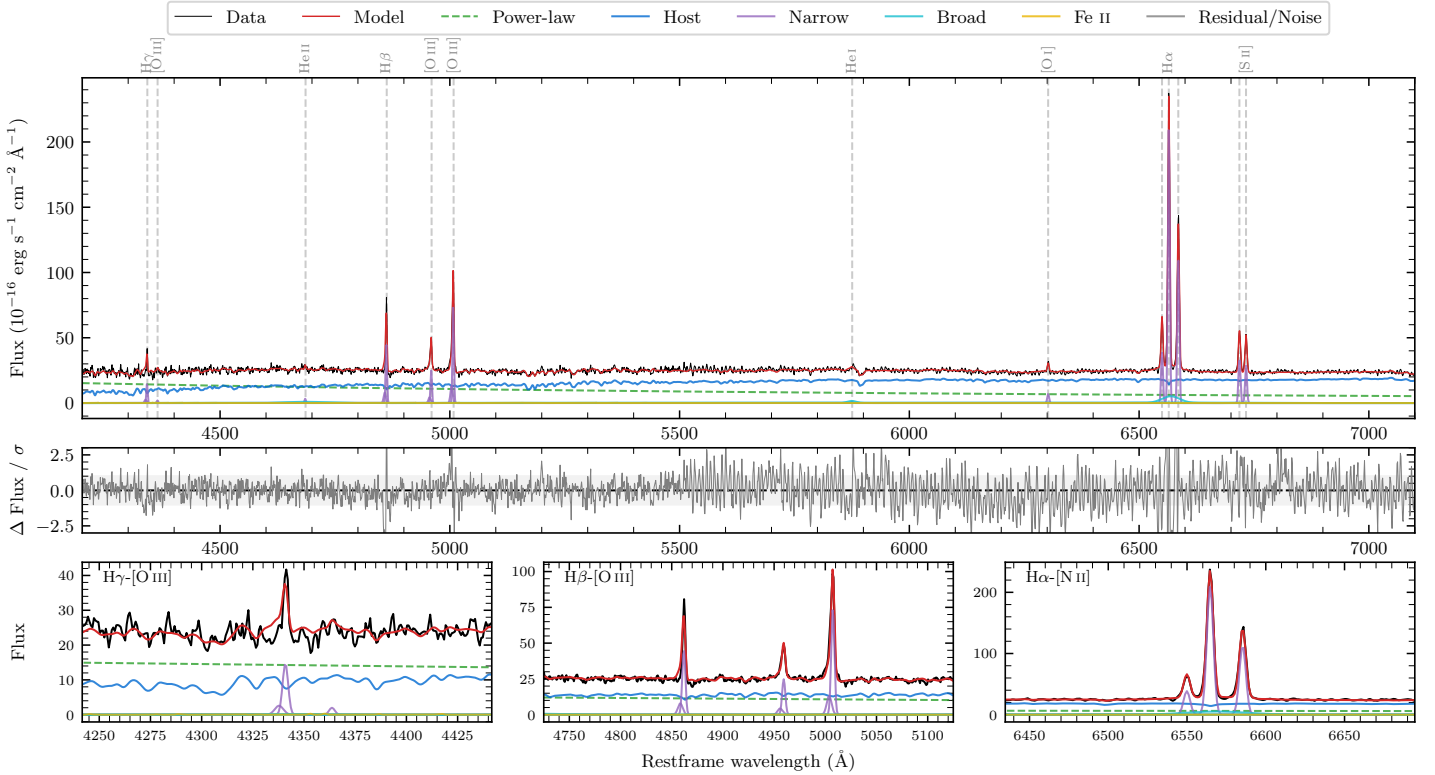
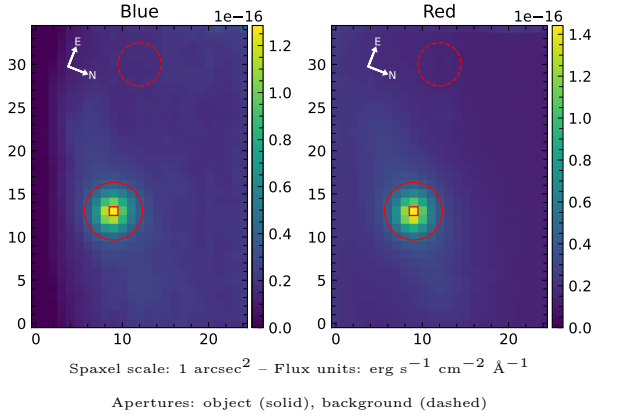


LEDA 90201

Spectrum ID	166757956_sp1	Spectrum type	Sy 2
Alt name	g1515297-142932	Quality flag	good
z	0.0244	AGN reference	6dFGS
RA, Dec	228.8737, -14.4922	MW $E(B - V)$	0.113
MJD	59347.65	Power law α_ν	0.02 ± 0.16
SNR/ \AA B/R	11.6/25.7	$\log L_{5100, \text{AGN}}$	42.86 ± 0.03
Obs airmass	1.15	$\log H\beta_{\text{Br}}/[\text{O III}]$	—
SMSS ID	166757956	$\log M_{L5100}/M_\odot$	—
Neighbour	None $< 15''$	$\log M_{\text{H}\alpha}/M_\odot$	—
SMSS $\langle r_6''_{\text{ap}} \rangle$	15.43 ± 0.03	$\log M_{\text{H}\beta}/M_\odot$	—
2MASS K_{ext}	10.96 ± 0.04	$\log M_{[\text{O III}]} / M_\odot$	—



Emission Line Measurements

Line	$\log L$ (erg s^{-1})	FWHM (km s^{-1})	σ (km s^{-1})	EW (\AA)
H γ Narrow	39.95 ± 0.07	242 ± 63	138 ± 25	4.56 ± 0.45
Hγ Broad	—	—	—	—
[O III] 4364	38.98 ± 0.39	227 ± 62	94 ± 25	0.50 ± 0.34
He II Narrow	39.23 ± 0.24	227 ± 62	94 ± 25	1.01 ± 0.32
He II Broad	40.17 ± 0.17	6764 ± 63	2872 ± 25	8.88 ± 1.77
H β Narrow	40.49 ± 0.02	242 ± 63	138 ± 25	19.75 ± 0.42
Hβ Broad	—	—	—	—
[O III] 5007	40.71 ± 0.01	242 ± 63	138 ± 25	35.27 ± 0.46
He I Narrow	38.76 ± 0.38	227 ± 62	94 ± 25	0.54 ± 0.25
He I Broad	39.75 ± 0.10	1178 ± 62	500 ± 25	5.31 ± 0.60
[O I] 6300	39.68 ± 0.04	227 ± 62	94 ± 25	5.22 ± 0.31
H α Narrow	41.26 ± 0.01	227 ± 62	94 ± 25	178.27 ± 0.42
Hα Broad	—	—	—	—
[N II] 6585	40.99 ± 0.01	227 ± 62	94 ± 25	96.98 ± 0.38
[S II] 6718	40.39 ± 0.01	227 ± 62	94 ± 25	30.53 ± 0.43
[S II] 6732	40.33 ± 0.01	227 ± 62	94 ± 25	26.27 ± 0.40

Emission Summary

H α broad SNR	0.00
H β broad SNR	0.00
H γ broad SNR	0.00
AGN frac	0.44
Host frac	0.56
$\log L_{5100, \text{Host}}$	42.97
Fe II/H β	—
Fe II/[O III]	—

Quality Flags

spurious_hab/hbb	1/0
15100	1
balmer	2
balmer_snr	2
hb_width	2
balmer_width	2