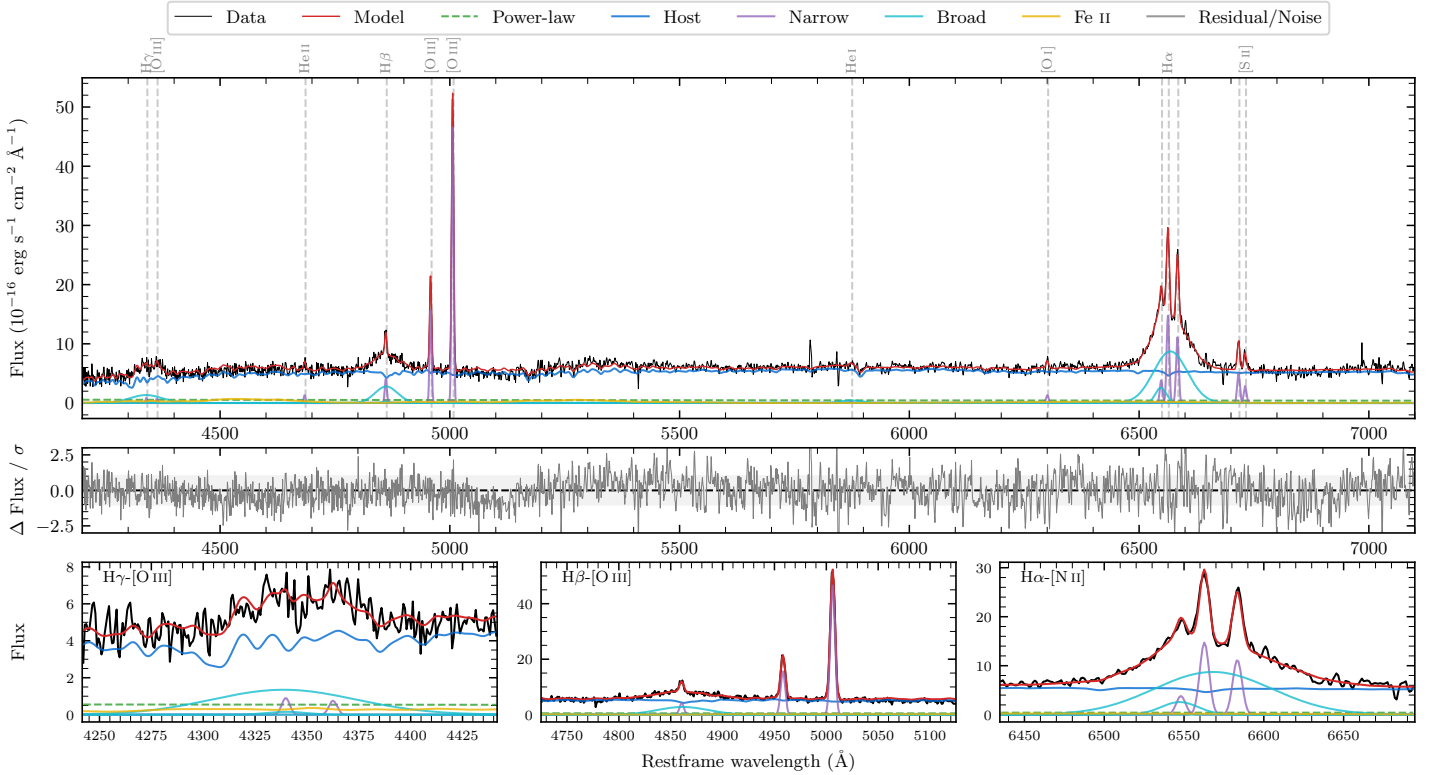
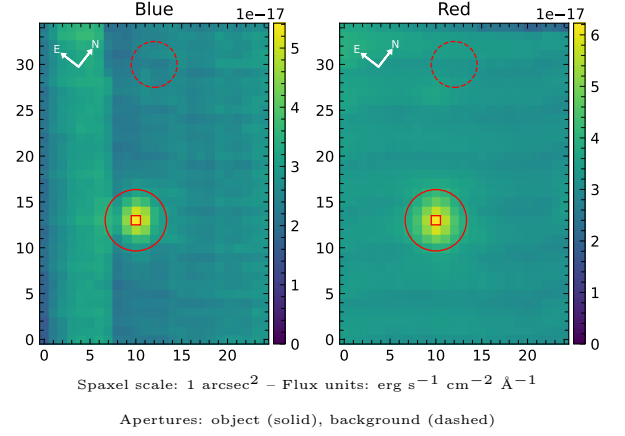


LEDA 911254

Spectrum ID	166647551_sp2	Spectrum type	Sy 1.5
Alt name	g1511595-152614	Quality flag	good
z	0.0885	AGN reference	6dFGS
RA, Dec	227.9982, -15.4371	MW $E(B - V)$	0.093
MJD	59994.77	Power law α_ν	-1.36 ± 0.43
SNR/ \AA B/R	8.2/11.5	$\log L_{5100, \text{AGN}}$	42.70 ± 0.17
Obs airmass	1.06	$\log H\beta_{\text{Br}}/[\text{O III}]$	-0.17 ± 0.03
SMSS ID	166647551	$\log M_{L5100}/M_\odot$	7.39 ± 0.09
Neighbour	13.5", 166647553	$\log M_{H\alpha}/M_\odot$	7.79 ± 0.02
SMSS $\langle r_6 \rangle_{\text{ap}}$	17.00 ± 0.07	$\log M_{H\beta}/M_\odot$	7.68 ± 0.06
2MASS K_{ext}	13.34 ± 0.17	$\log M_{[\text{O III}]} / M_\odot$	7.92 ± 0.05



Emission Line Measurements

Line	$\log L$ (erg s ⁻¹)	FWHM (km s ⁻¹)	σ (km s ⁻¹)	EW (Å)
H γ Narrow	39.98 ± 0.28	315 ± 63	134 ± 25	8.83 ± 3.86
Hγ Broad	41.42 ± 0.06	5195 ± 425	2055 ± 42	242.88 ± 15.21
[O III] 4364	39.90 ± 0.34	317 ± 63	133 ± 25	7.38 ± 3.49
He II Narrow	40.17 ± 0.16	317 ± 63	133 ± 25	14.46 ± 3.20
He II Broad	—	—	—	—
H β Narrow	40.68 ± 0.06	315 ± 63	134 ± 25	47.73 ± 3.71
Hβ Broad	41.58 ± 0.03	3316 ± 194	1280 ± 29	377.64 ± 11.19
[O III] 5007	41.75 ± 0.01	315 ± 63	134 ± 25	575.58 ± 4.63
He I Narrow	39.56 ± 0.39	317 ± 63	133 ± 25	4.12 ± 2.62
He I Broad	40.74 ± 0.11	2720 ± 66	1155 ± 27	61.45 ± 8.43
[O I] 6300	40.30 ± 0.09	317 ± 63	133 ± 25	23.65 ± 3.41
H α Narrow	41.36 ± 0.01	317 ± 63	133 ± 25	280.42 ± 3.69
Hα Broad	42.28 ± 0.01	3627 ± 81	1412 ± 25	2296.52 ± 13.72
[N II] 6585	41.25 ± 0.01	317 ± 63	133 ± 25	214.17 ± 3.91
[S II] 6718	40.90 ± 0.03	317 ± 63	133 ± 25	98.36 ± 4.11
[S II] 6732	40.66 ± 0.05	317 ± 63	133 ± 25	57.00 ± 4.15

Emission Summary

H α broad SNR	14.21
H β broad SNR	4.27
H γ broad SNR	2.15
AGN frac	0.09
Host frac	0.91
$\log L_{5100, \text{Host}}$	43.70
Fe II/H β	0.90
Fe II/[O III]	0.60

Quality Flags

spurious_hab/hbb	0/0
15100	2
balmer	0
balmer_snr	1
hb_width	0
balmer_width	1