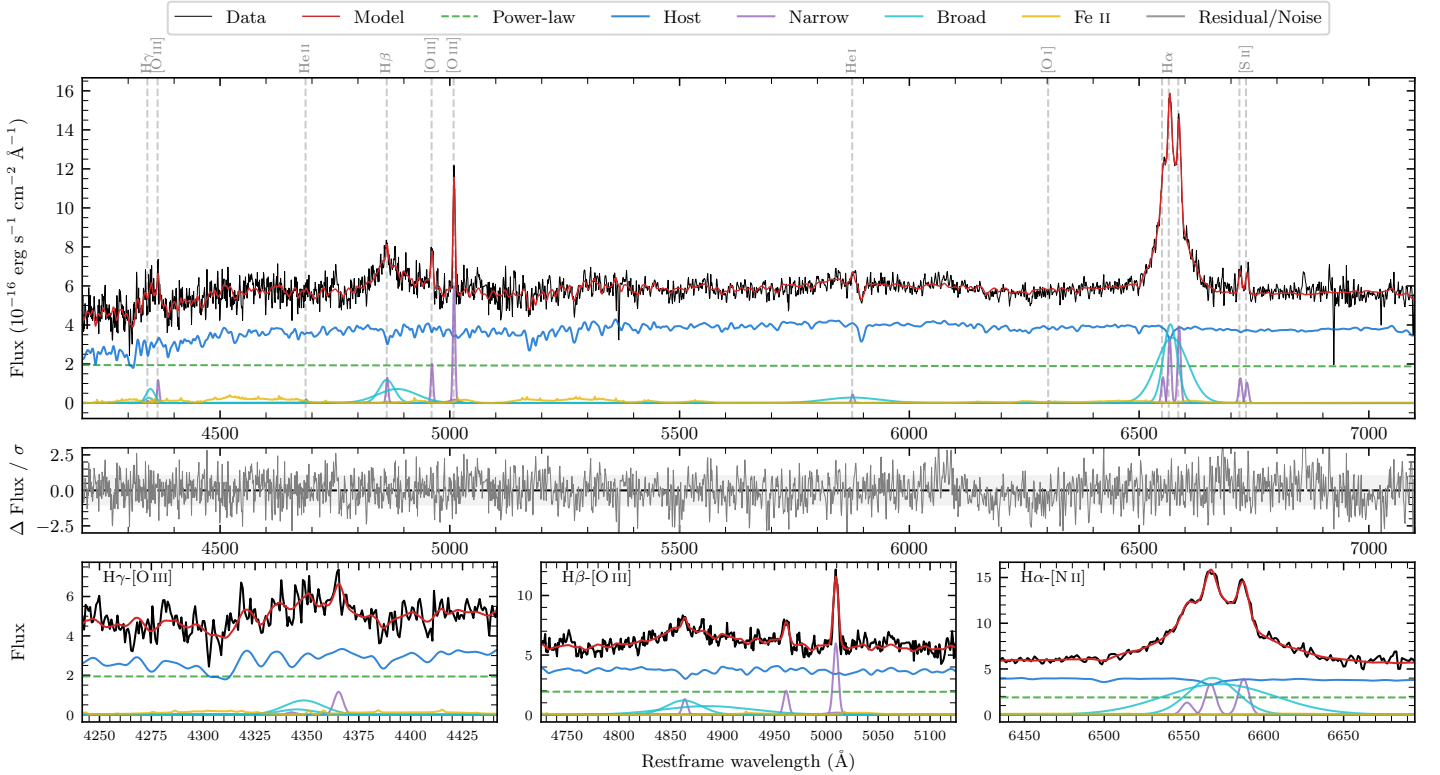
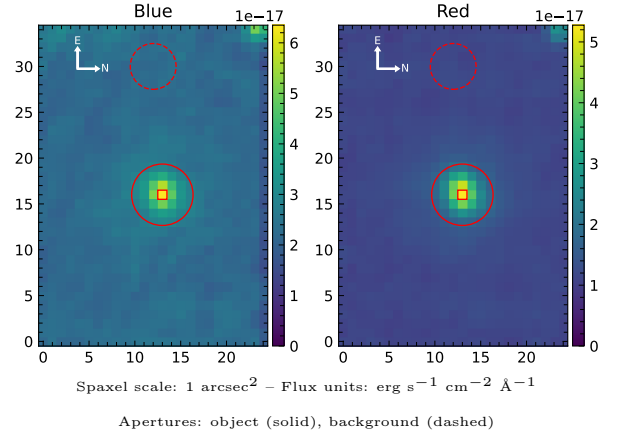


# LEDA 266917

Spectrum ID	1610752558_sp1	Spectrum type	Sy 1.2
Alt name	g0017263-715032	Quality flag	good
$z$	0.0989	AGN reference	6dFGS
RA, Dec	4.3592, -71.8422	MW $E(B-V)$	0.027
MJD	60164.71	Power law $\alpha_\nu$	$-1.93 \pm 0.07$
SNR/ $\text{\AA}$ B/R	13.1/21.4	$\log L_{5100, \text{AGN}}$	$43.38 \pm 0.05$
Obs airmass	1.31	$\log H\beta_{\text{Br}}/[\text{O III}]$	$0.48 \pm 0.04$
SMSS ID	1610752558	$\log M_{L5100}/M_\odot$	$7.68 \pm 0.08$
Neighbour	13.2", 2714509256	$\log M_{\text{H}\alpha}/M_\odot$	$7.26 \pm 0.03$
SMSS $\langle r_6''_{\text{ap}} \rangle$	nan $\pm$ nan	$\log M_{\text{H}\beta}/M_\odot$	$7.66 \pm 0.08$
2MASS $K_{\text{ext}}$	$12.61 \pm 0.10$	$\log M_{[\text{O III}]} / M_\odot$	$7.58 \pm 0.08$



## Emission Line Measurements

Line	$\log L$ (erg s <sup>-1</sup> )	FWHM (km s <sup>-1</sup> )	$\sigma$ (km s <sup>-1</sup> )	EW (Å)
H $\gamma$ Narrow	–	–	–	–
<b>H<math>\gamma</math> Broad</b>	<b><math>40.82 \pm 0.08</math></b>	<b><math>1531 \pm 73</math></b>	<b><math>539 \pm 25</math></b>	<b><math>13.17 \pm 1.39</math></b>
[O III] 4364	$40.24 \pm 0.13$	$352 \pm 63$	$149 \pm 25$	$3.60 \pm 0.66$
He II Narrow	$39.51 \pm 0.44$	$352 \pm 63$	$149 \pm 25$	$0.68 \pm 0.56$
<b>He II Broad</b>	<b><math>39.70 \pm 0.47</math></b>	<b><math>1181 \pm 63</math></b>	<b><math>501 \pm 25</math></b>	<b><math>1.05 \pm 1.03</math></b>
H $\beta$ Narrow	$40.39 \pm 0.12$	$359 \pm 63$	$240 \pm 64$	$5.10 \pm 1.13$
<b>H<math>\beta</math> Broad</b>	<b><math>41.54 \pm 0.03</math></b>	<b><math>3306 \pm 283</math></b>	<b><math>1701 \pm 65</math></b>	<b><math>73.24 \pm 2.65</math></b>
[O III] 5007	$41.06 \pm 0.03$	$359 \pm 63$	$240 \pm 64$	$23.89 \pm 1.26$
He I Narrow	$39.94 \pm 0.16$	$352 \pm 63$	$149 \pm 25$	$1.85 \pm 0.41$
<b>He I Broad</b>	<b><math>41.06 \pm 0.07</math></b>	<b><math>7158 \pm 63</math></b>	<b><math>3040 \pm 25</math></b>	<b><math>24.25 \pm 1.89</math></b>
[O I] 6300	$39.27 \pm 0.46$	$352 \pm 63$	$149 \pm 25$	$0.40 \pm 0.40$
H $\alpha$ Narrow	$40.87 \pm 0.04$	$352 \pm 63$	$149 \pm 25$	$16.10 \pm 0.47$
<b>H<math>\alpha</math> Broad</b>	<b><math>42.08 \pm 0.01</math></b>	<b><math>2251 \pm 77</math></b>	<b><math>1052 \pm 25</math></b>	<b><math>258.28 \pm 1.63</math></b>
[N II] 6585	$40.94 \pm 0.03$	$352 \pm 63$	$149 \pm 25$	$18.71 \pm 0.60$
[S II] 6718	$40.46 \pm 0.05$	$352 \pm 63$	$149 \pm 25$	$6.27 \pm 0.50$
[S II] 6732	$40.38 \pm 0.06$	$352 \pm 63$	$149 \pm 25$	$5.13 \pm 0.48$

## Emission Summary

H $\alpha$ broad SNR	16.87
H $\beta$ broad SNR	4.20
H $\gamma$ broad SNR	2.40
AGN frac	0.35
Host frac	0.65
$\log L_{5100, \text{Host}}$	43.65
Fe II/H $\beta$	0.45
Fe II/[O III]	1.39

## Quality Flags

spurious_hab/hbb	0/0
15100	1
balmer	0
balmer_snr	1
hb_width	1
balmer_width	0