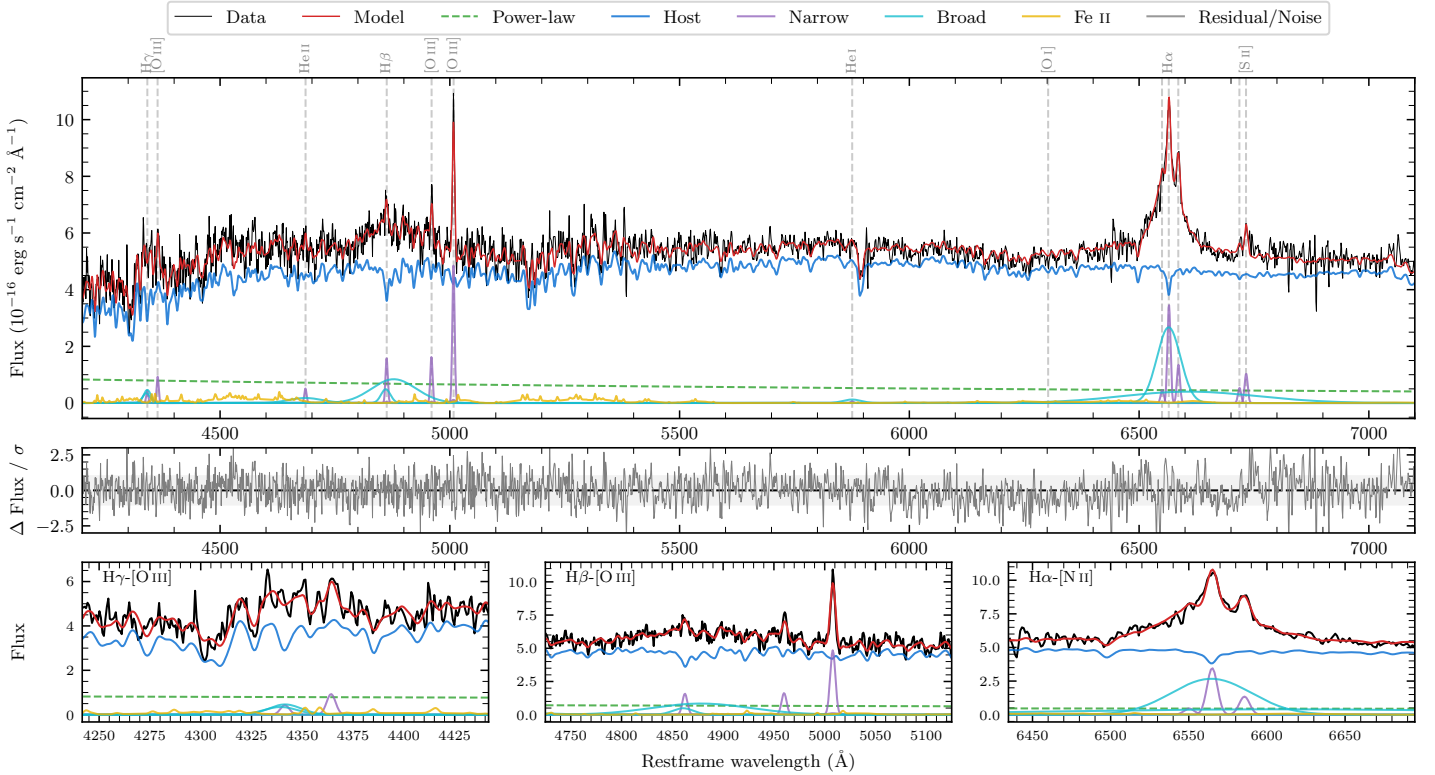
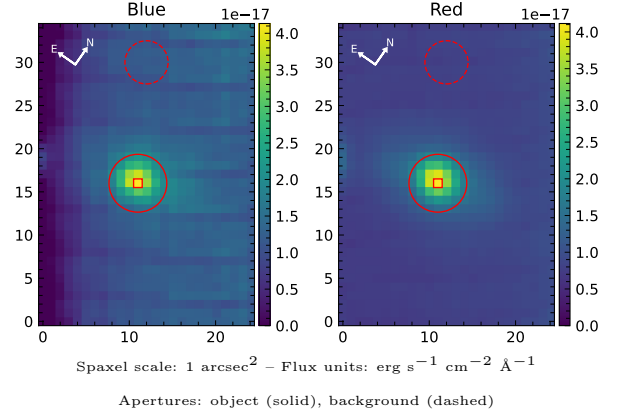


LEDA 584623

Spectrum ID	1608495_sp2	Spectrum type	Sy 1.2
Alt name	g2244464-403541	Quality flag	good
z	0.0664	AGN reference	6dFGS
RA, Dec	341.1935, -40.5947	MW $E(B-V)$	0.013
MJD	60171.59	Power law α_ν	-0.65 ± 0.37
SNR/ \AA B/R	14.3/21.9	$\log L_{5100, \text{AGN}}$	42.54 ± 0.09
Obs airmass	1.04	$\log H\beta_{\text{Br}}/[\text{O III}]$	0.55 ± 0.03
SMSS ID	1608495	$\log M_{L5100}/M_\odot$	7.62 ± 0.19
Neighbour	7.6", 2002730871	$\log M_{\text{H}\alpha}/M_\odot$	7.19 ± 0.03
SMSS $\langle r_6^{\text{ap}} \rangle$	16.64 ± 0.08	$\log M_{\text{H}\beta}/M_\odot$	7.77 ± 0.19
2MASS K_{ext}	12.72 ± 0.10	$\log M_{[\text{O III}]} / M_\odot$	7.64 ± 0.19



Emission Line Measurements

Line	$\log L$ (erg s ⁻¹)	FWHM (km s ⁻¹)	σ (km s ⁻¹)	EW (Å)
H γ Narrow	39.46 ± 0.33	362 ± 64	160 ± 27	3.34 ± 1.66
Hγ Broad	40.31 ± 0.10	1321 ± 82	482 ± 29	21.90 ± 2.58
[O III] 4364	39.76 ± 0.13	358 ± 64	152 ± 26	6.97 ± 1.32
He II Narrow	39.54 ± 0.21	358 ± 64	152 ± 26	4.56 ± 1.32
He II Broad	40.26 ± 0.16	5408 ± 92	2296 ± 38	23.88 ± 5.03
H β Narrow	40.07 ± 0.08	362 ± 64	160 ± 27	15.91 ± 1.77
Hβ Broad	41.12 ± 0.03	4682 ± 973	2355 ± 60	179.79 ± 6.23
[O III] 5007	40.57 ± 0.02	362 ± 64	160 ± 27	52.32 ± 1.82
He I Narrow	—	—	—	—
He I Broad	39.83 ± 0.21	2336 ± 98	992 ± 41	12.23 ± 3.47
[O I] 6300	—	—	—	—
H α Narrow	40.51 ± 0.03	358 ± 64	152 ± 26	67.68 ± 1.70
Hα Broad	41.56 ± 0.01	3018 ± 89	2666 ± 72	750.72 ± 10.22
[N II] 6585	40.10 ± 0.06	358 ± 64	152 ± 26	26.56 ± 1.63
[S II] 6718	39.71 ± 0.10	358 ± 64	152 ± 26	11.04 ± 1.61
[S II] 6732	40.00 ± 0.06	358 ± 64	152 ± 26	21.53 ± 1.73

Emission Summary

H α broad SNR	7.97
H β broad SNR	3.36
H γ broad SNR	2.26
AGN frac	0.13
Host frac	0.87
$\log L_{5100, \text{Host}}$	43.37
Fe II/H β	0.40
Fe II/[O III]	1.42

Quality Flags

spurious_hab/hbb	0/0
15100	2
balmer	0
balmer_snr	1
hb_width	1
balmer_width	0