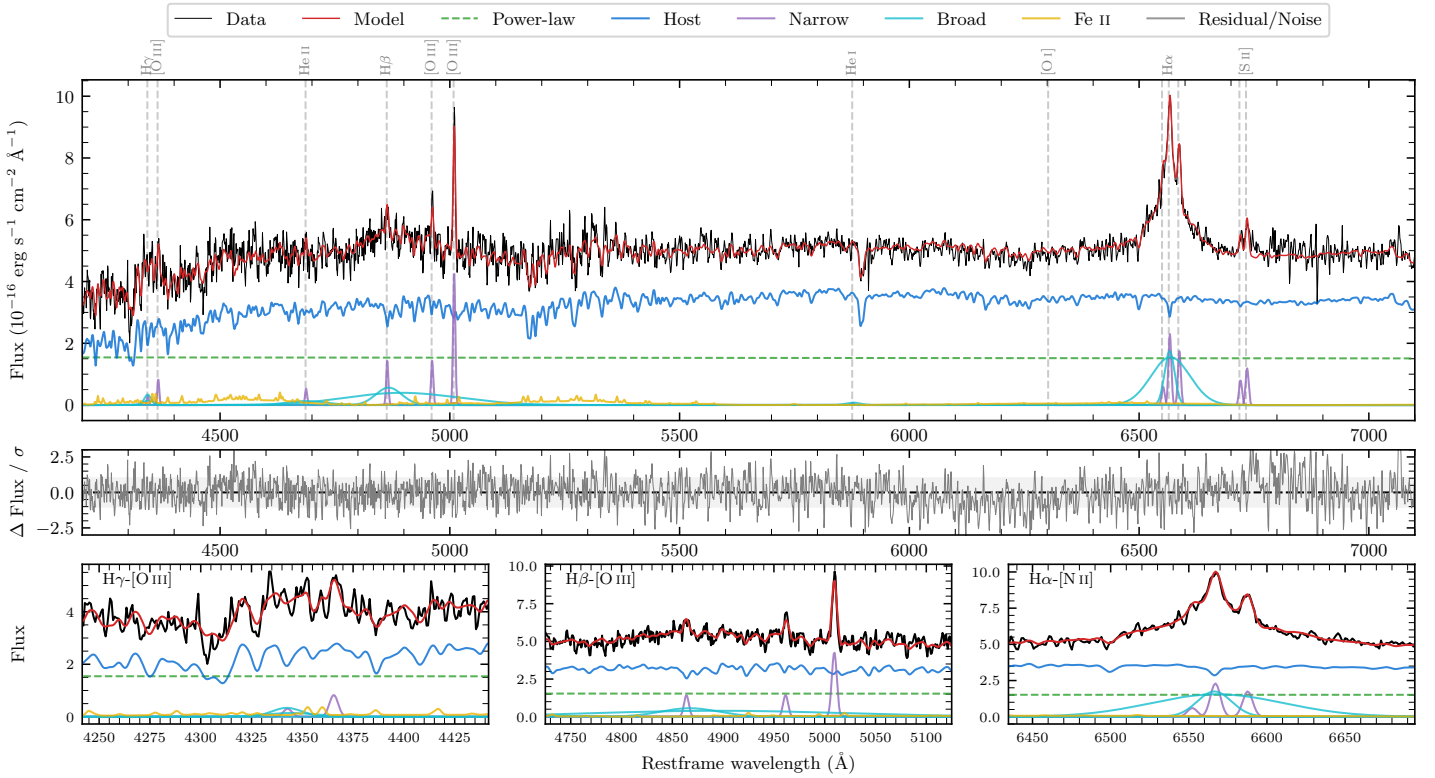
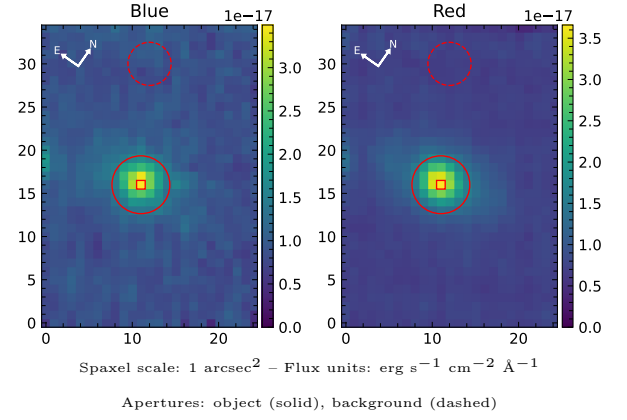


# LEDA 584623

Spectrum ID	1608495_sp1	Spectrum type	Sy 1.5
Alt name	g2244464-403541	Quality flag	good
$z$	0.0664	AGN reference	6dFGS
RA, Dec	341.1935, -40.5947	MW $E(B - V)$	0.013
MJD	60171.59	Power law $\alpha_\nu$	$-1.96 \pm 0.04$
SNR/ $\text{\AA}$ B/R	13.4/25.0	$\log L_{5100, \text{AGN}}$	$42.92 \pm 0.03$
Obs airmass	1.04	$\log H\beta_{\text{Br}}/[\text{O III}]$	$0.15 \pm 0.34$
SMSS ID	1608495	$\log M_{L5100}/M_\odot$	$7.67 \pm 0.03$
Neighbour	7.6", 2002730871	$\log M_{\text{H}\alpha}/M_\odot$	$6.70 \pm 0.05$
SMSS $\langle r_6''_{\text{ap}} \rangle$	$16.64 \pm 0.08$	$\log M_{\text{H}\beta}/M_\odot$	$7.45 \pm 0.17$
2MASS $K_{\text{ext}}$	$12.72 \pm 0.10$	$\log M_{[\text{O III}]} / M_\odot$	$7.49 \pm 0.05$



## Emission Line Measurements

Line	$\log L$ (erg s $^{-1}$ )	FWHM (km s $^{-1}$ )	$\sigma$ (km s $^{-1}$ )	EW (Angstrom)
H $\gamma$ Narrow	$39.30 \pm 0.40$	$350 \pm 63$	$193 \pm 46$	$1.19 \pm 1.09$
<b>H<math>\gamma</math> Broad</b>	<b><math>40.15 \pm 0.14</math></b>	<b><math>1373 \pm 193</math></b>	<b><math>554 \pm 110</math></b>	<b><math>7.47 \pm 1.54</math></b>
[O III] 4364	$39.70 \pm 0.15$	$346 \pm 63$	$146 \pm 25$	$3.07 \pm 0.63$
He II Narrow	$39.54 \pm 0.19$	$346 \pm 63$	$146 \pm 25$	$2.11 \pm 0.60$
<b>He II Broad</b>	—	—	—	—
H $\beta$ Narrow	$40.02 \pm 0.08$	$350 \pm 63$	$194 \pm 46$	$6.27 \pm 1.03$
<b>H<math>\beta</math> Broad</b>	<b><math>40.66^{+0.61}_{-0.07}</math></b>	<b><math>4097 \pm 26</math></b>	<b><math>1520 \pm 25</math></b>	<b><math>27.82 \pm 1.99</math></b>
[O III] 5007	$40.50 \pm 0.03$	$350 \pm 63$	$194 \pm 46$	$19.34 \pm 1.07$
He I Narrow	—	—	—	—
<b>He I Broad</b>	<b><math>39.57 \pm 0.29</math></b>	<b><math>1909 \pm 63</math></b>	<b><math>810 \pm 25</math></b>	<b><math>2.27 \pm 0.91</math></b>
[O I] 6300	—	—	—	—
H $\alpha$ Narrow	$40.32 \pm 0.04$	$346 \pm 63$	$146 \pm 25$	$12.98 \pm 0.42$
<b>H<math>\alpha</math> Broad</b>	<b><math>41.38 \pm 0.01</math></b>	<b><math>1924 \pm 106</math></b>	<b><math>1346 \pm 25</math></b>	<b><math>149.94 \pm 1.53</math></b>
[N II] 6585	$40.20 \pm 0.03$	$346 \pm 63$	$146 \pm 25$	$9.90 \pm 0.40$
[S II] 6718	$39.87 \pm 0.06$	$346 \pm 63$	$146 \pm 25$	$4.65 \pm 0.39$
[S II] 6732	$40.04 \pm 0.04$	$346 \pm 63$	$146 \pm 25$	$6.89 \pm 0.40$

## Emission Summary

H $\alpha$ broad SNR	9.39
H $\beta$ broad SNR	1.61
H $\gamma$ broad SNR	1.54
AGN frac	0.34
Host frac	0.66
$\log L_{5100, \text{Host}}$	43.21
Fe II/H $\beta$	—
Fe II/[O III]	—

## Quality Flags

spurious_hab/hbb	0/1
15100	1
balmer	1
balmer_snr	2
hb_width	0
balmer_width	1