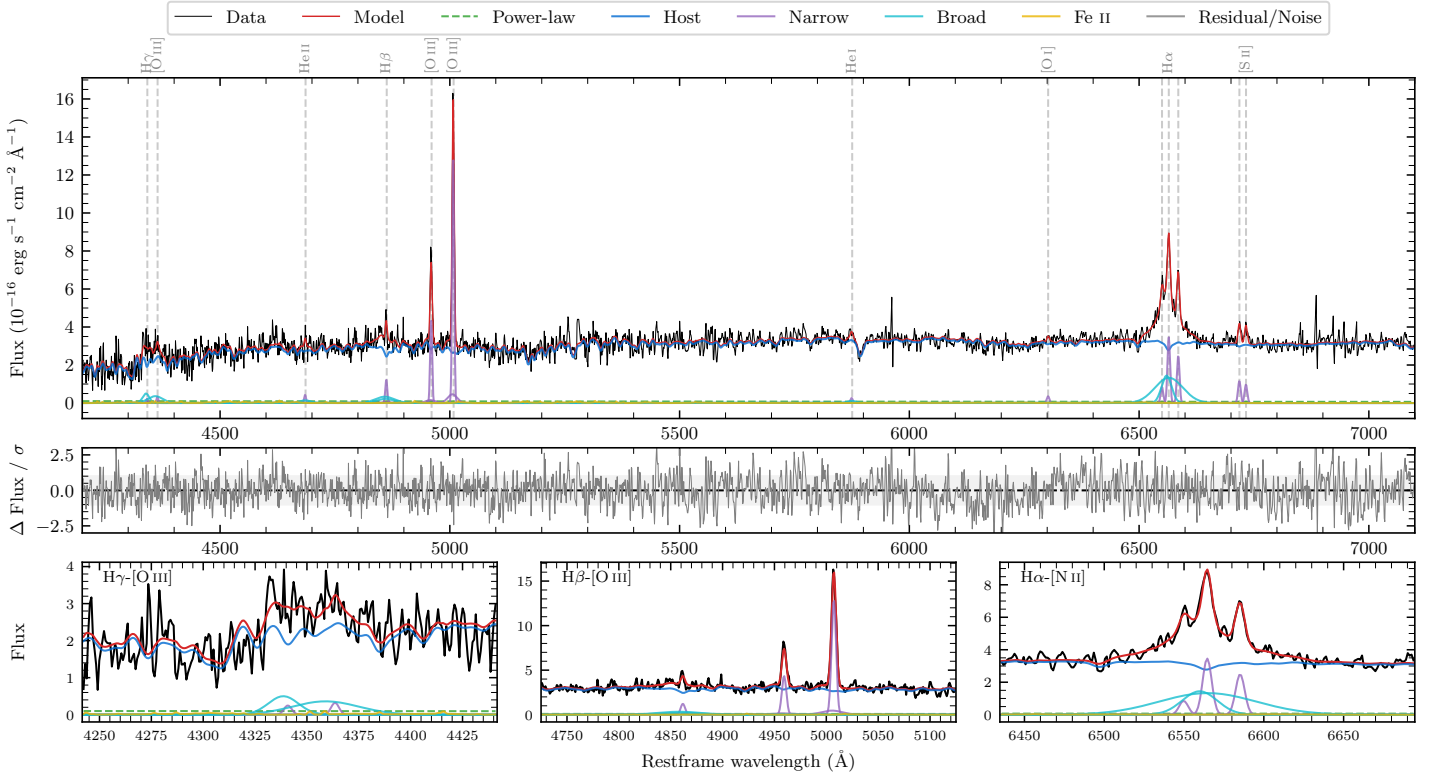
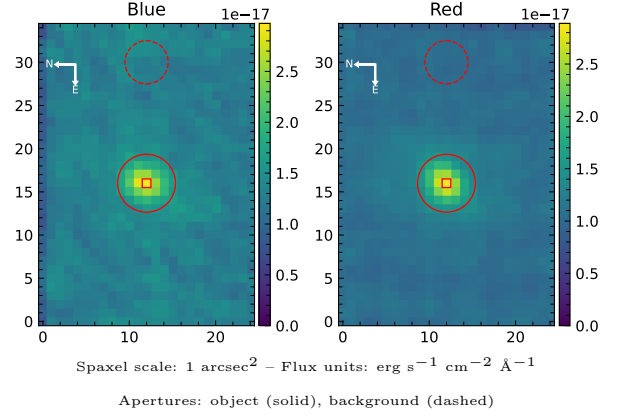


# ESO 49-9

Spectrum ID	1593527046_sp1	Spectrum type	Sy 1.5
Alt name	g2317463-721558	Quality flag	good
$z$	0.0568	AGN reference	6dFGS
RA, Dec	349.4429, -72.2661	MW $E(B-V)$	0.025
MJD	60176.64	Power law $\alpha_\nu$	$-1.09 \pm 0.47$
SNR/ $\text{\AA}$ B/R	7.0/13.4	$\log L_{5100, \text{AGN}}$	$41.52 \pm 0.30$
Obs airmass	1.32	$\log H\beta_{\text{Br}}/[\text{O III}]$	$-0.46 \pm 0.09$
SMSS ID	1593527046	$\log M_{L5100}/M_\odot$	$6.75 \pm 0.14$
Neighbour	None $< 15''$	$\log M_{\text{H}\alpha}/M_\odot$	$6.44 \pm 0.07$
SMSS $\langle r_6''_{\text{ap}} \rangle$	$16.25 \pm 0.08$	$\log M_{\text{H}\beta}/M_\odot$	$7.00 \pm 0.08$
2MASS $K_{\text{ext}}$	$12.28 \pm 0.11$	$\log M_{[\text{O III}]} / M_\odot$	$7.33 \pm 0.05$



## Emission Line Measurements

Line	$\log L$ (erg s <sup>-1</sup> )	FWHM (km s <sup>-1</sup> )	$\sigma$ (km s <sup>-1</sup> )	EW (Å)
H $\gamma$ Narrow	—	—	—	—
<b>H<math>\gamma</math> Broad</b>	<b><math>40.29 \pm 0.11</math></b>	<b><math>2443 \pm 820</math></b>	<b><math>911 \pm 28</math></b>	<b><math>258.15 \pm 33.08</math></b>
[O III] 4364	$39.10 \pm 0.40$	$311 \pm 63$	$130 \pm 25$	$16.85 \pm 10.84$
He II Narrow	$39.25 \pm 0.30$	$311 \pm 63$	$130 \pm 25$	$25.50 \pm 10.41$
<b>He II Broad</b>	<b><math>39.51 \pm 0.36</math></b>	<b><math>1627 \pm 63</math></b>	<b><math>690 \pm 25</math></b>	<b><math>46.03 \pm 24.29</math></b>
H $\beta$ Narrow	$39.79 \pm 0.11$	$318 \pm 63$	$258 \pm 40$	$91.70 \pm 20.93$
<b>H<math>\beta</math> Broad</b>	<b><math>40.37 \pm 0.08</math></b>	<b><math>2839 \pm 114</math></b>	<b><math>1061 \pm 44</math></b>	<b><math>331.01 \pm 32.32</math></b>
[O III] 5007	$40.83 \pm 0.02$	$318 \pm 63$	$258 \pm 40$	$1021.15 \pm 23.69$
He I Narrow	$39.14 \pm 0.28$	$311 \pm 63$	$130 \pm 25$	$24.36 \pm 12.67$
<b>He I Broad</b>	<b><math>39.37 \pm 0.34</math></b>	<b><math>1179 \pm 62</math></b>	<b><math>500 \pm 25</math></b>	<b><math>41.00 \pm 19.11</math></b>
[O I] 6300	$39.30 \pm 0.16$	$311 \pm 63$	$130 \pm 25$	$37.41 \pm 8.73$
H $\alpha$ Narrow	$40.30 \pm 0.03$	$311 \pm 63$	$130 \pm 25$	$392.94 \pm 12.41$
<b>H<math>\alpha</math> Broad</b>	<b><math>41.07 \pm 0.02</math></b>	<b><math>1788 \pm 114</math></b>	<b><math>954 \pm 27</math></b>	<b><math>2253.78 \pm 35.29</math></b>
[N II] 6585	$40.16 \pm 0.03$	$311 \pm 63$	$130 \pm 25$	$284.80 \pm 11.46$
[S II] 6718	$39.84 \pm 0.05$	$311 \pm 63$	$130 \pm 25$	$137.29 \pm 9.78$
[S II] 6732	$39.76 \pm 0.06$	$311 \pm 63$	$130 \pm 25$	$115.34 \pm 9.62$

## Emission Summary

H $\alpha$ broad SNR	6.68
H $\beta$ broad SNR	1.41
H $\gamma$ broad SNR	1.64
AGN frac	0.03
Host frac	0.97
$\log L_{5100, \text{Host}}$	43.04
Fe II/H $\beta$	0.38
Fe II/[O III]	0.13

## Quality Flags

spurious_hab/hbb	0/0
15100	2
balmer	1
balmer_snr	2
hb_width	0
balmer_width	0