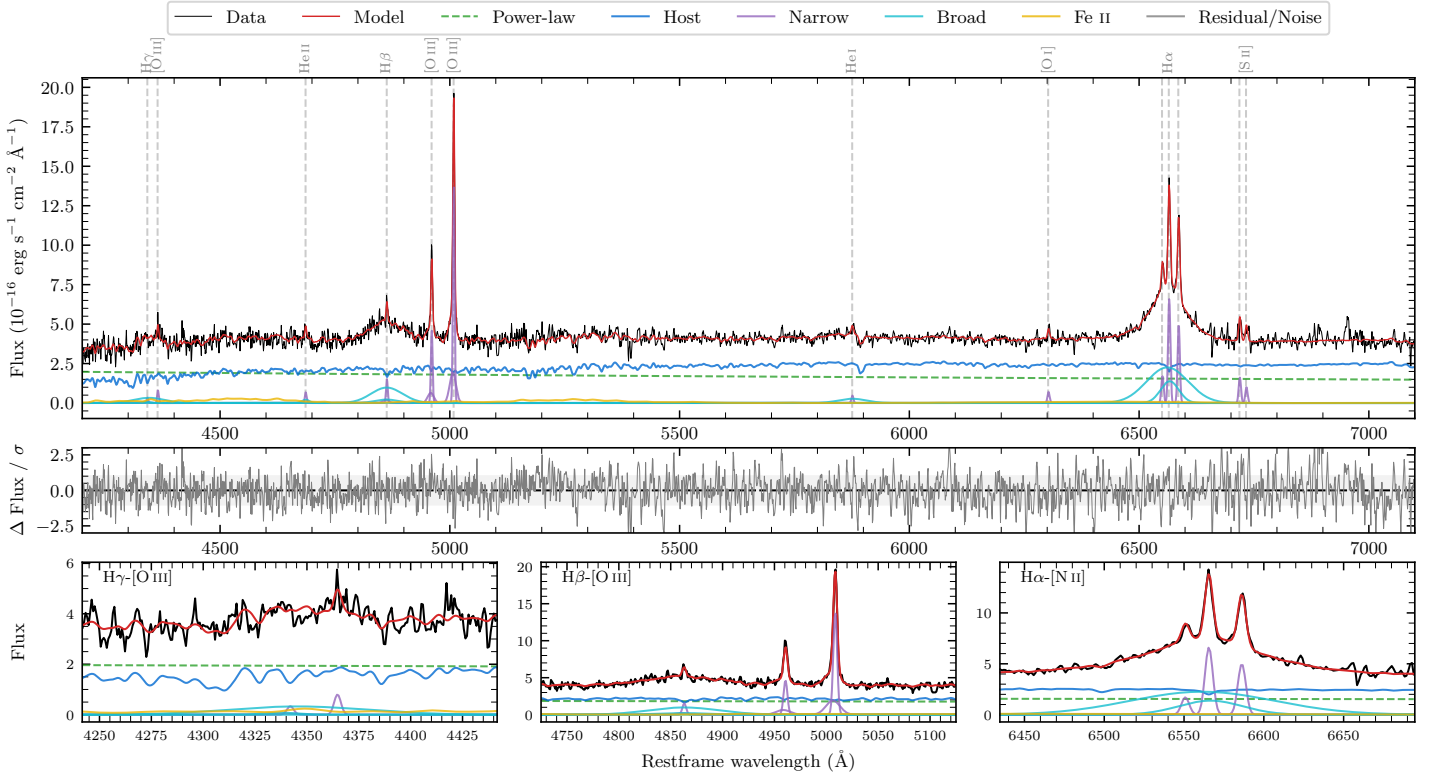
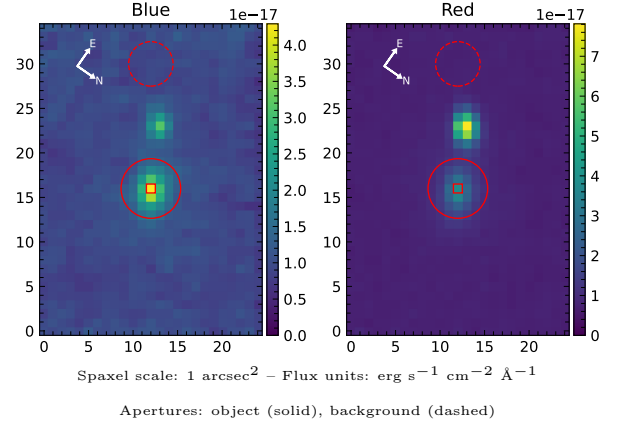


6dFGS gJ222235.2–693328

Spectrum ID	1593231618_sp1	Spectrum type	Sy 1.5
Alt name	g2222352–693328	Quality flag	good
z	0.0934	AGN reference	6dFGS
RA, Dec	335.6461, –69.5577	MW $E(B - V)$	0.023
MJD	60165.63	Power law α_ν	-1.45 ± 0.30
SNR/ \AA B/R	12.2/18.2	$\log L_{5100, \text{AGN}}$	43.30 ± 0.03
Obs airmass	1.27	$\log H\beta_{\text{Br}}/[\text{O III}]$	0.00 ± 0.03
SMSS ID	1593231618	$\log M_{L5100}/M_\odot$	7.95 ± 0.05
Neighbour	6.9", 1593231619	$\log M_{H\alpha}/M_\odot$	7.52 ± 0.03
SMSS $\langle r_{6''} \text{ap} \rangle$	17.04 ± 0.04	$\log M_{H\beta}/M_\odot$	7.90 ± 0.06
2MASS K_{ext}	13.51 ± 0.20	$\log M_{[\text{O III}]} / M_\odot$	8.04 ± 0.05



Emission Line Measurements

Line	$\log L$ (erg s ⁻¹)	FWHM (km s ⁻¹)	σ (km s ⁻¹)	EW (Å)
H γ Narrow	39.69 ± 0.30	293 ± 63	258 ± 32	1.16 ± 0.73
Hγ Broad	40.86 ± 0.10	4647 ± 933	1910 ± 130	16.27 ± 1.88
[O III] 4364	39.90 ± 0.15	271 ± 63	113 ± 25	1.86 ± 0.41
He II Narrow	39.86 ± 0.18	271 ± 63	113 ± 25	1.78 ± 0.39
He II Broad	40.00 ± 0.27	1182 ± 63	502 ± 25	2.44 ± 0.92
H β Narrow	40.40 ± 0.06	293 ± 63	258 ± 32	6.26 ± 0.76
Hβ Broad	41.37 ± 0.03	4711 ± 249	1756 ± 91	58.13 ± 1.86
[O III] 5007	41.37 ± 0.01	293 ± 63	258 ± 32	59.54 ± 0.88
He I Narrow	39.80 ± 0.13	271 ± 63	113 ± 25	1.75 ± 0.31
He I Broad	40.67 ± 0.07	3614 ± 267	1535 ± 113	13.59 ± 1.26
[O I] 6300	40.00 ± 0.09	271 ± 63	113 ± 25	2.90 ± 0.38
H α Narrow	40.99 ± 0.02	271 ± 63	113 ± 25	28.95 ± 0.46
Hα Broad	41.89 ± 0.01	3477 ± 122	1549 ± 36	229.54 ± 1.83
[N II] 6585	40.87 ± 0.02	271 ± 63	113 ± 25	21.98 ± 0.44
[S II] 6718	40.39 ± 0.04	271 ± 63	113 ± 25	7.33 ± 0.46
[S II] 6732	40.19 ± 0.07	271 ± 63	113 ± 25	4.63 ± 0.46

Emission Summary

H α broad SNR	10.73
H β broad SNR	3.56
H γ broad SNR	1.26
AGN frac	0.46
Host frac	0.54
$\log L_{5100, \text{Host}}$	43.36
Fe II/H β	0.68
Fe II/[O III]	0.68

Quality Flags

spurious_hab/hbb	0/0
15100	1
balmer	0
balmer_snr	1
hb_width	0
balmer_width	0