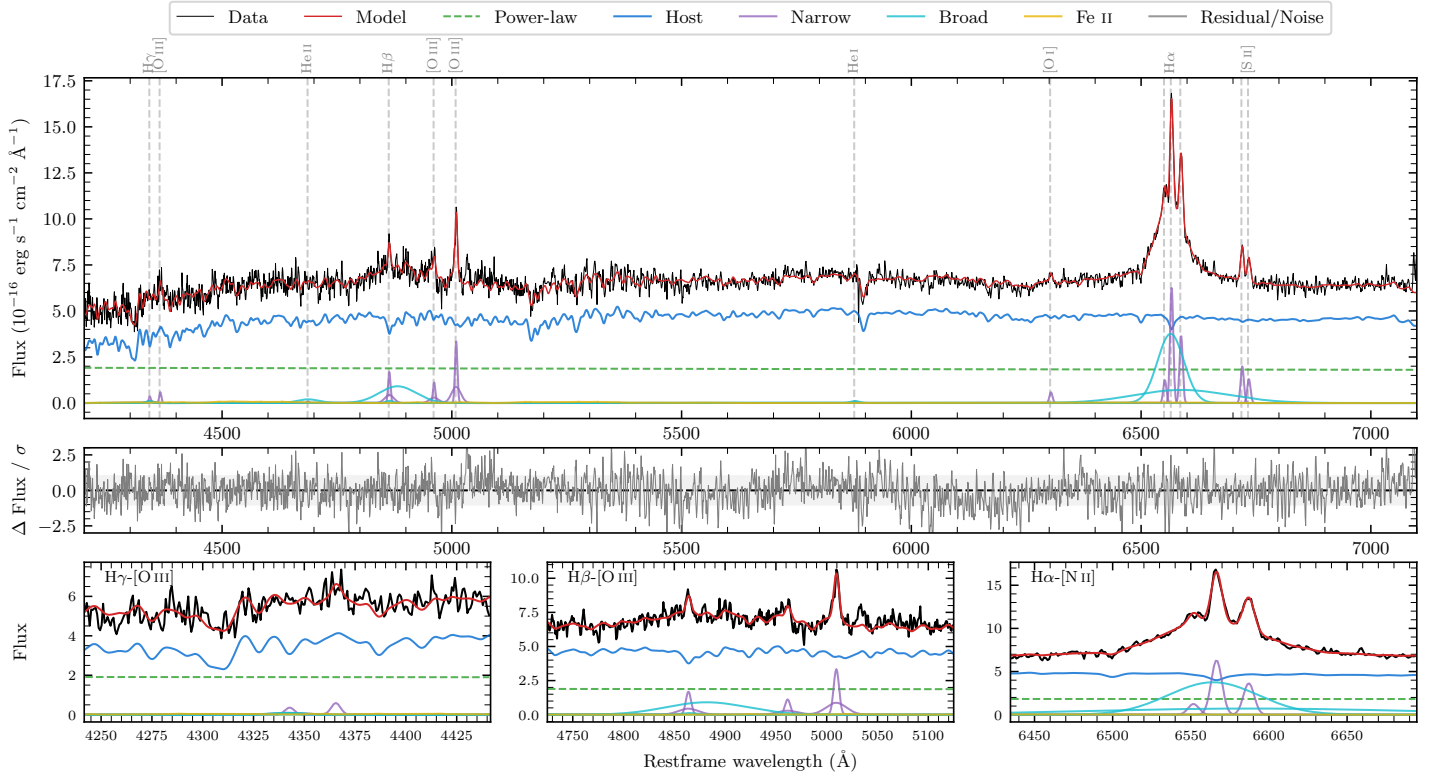
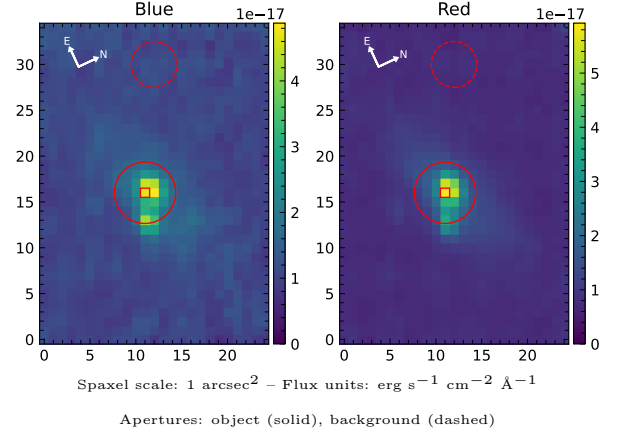


LEDA 161868

Spectrum ID	1584630485_sp1	Spectrum type	Sy 1.2
Alt name	g2001061-461353	Quality flag	good
z	0.0712	AGN reference	6dFGS
RA, Dec	300.2753, -46.2316	MW $E(B - V)$	0.044
MJD	60165.54	Power law α_ν	-1.89 ± 0.10
SNR/ \AA B/R	15.5/28.5	$\log L_{5100, \text{AGN}}$	43.07 ± 0.03
Obs airmass	1.03	$\log H\beta_{\text{Br}}/[\text{O III}]$	0.33 ± 0.05
SMSS ID	1584630485	$\log M_{L5100}/M_\odot$	7.98 ± 0.06
Neighbour	2.9", 2685634828	$\log M_{\text{H}\alpha}/M_\odot$	7.45 ± 0.02
SMSS $\langle r_{6''}^{\text{ap}} \rangle$	16.31 ± 0.04	$\log M_{\text{H}\beta}/M_\odot$	7.90 ± 0.07
2MASS K_{ext}	12.46 ± 0.08	$\log M_{[\text{O III}]} / M_\odot$	7.87 ± 0.07



Emission Line Measurements

Line	$\log L$ (erg s^{-1})	FWHM (km s^{-1})	σ (km s^{-1})	EW (\AA)
H γ Narrow	39.74 ± 0.32	437 ± 65	438 ± 35	2.31 ± 1.13
Hγ Broad	—	—	—	—
[O III] 4364	39.65 ± 0.23	373 ± 63	158 ± 25	1.90 ± 0.60
He II Narrow	—	—	—	—
He II Broad	40.20 ± 0.19	3557 ± 63	1510 ± 25	6.76 ± 1.74
H β Narrow	40.46 ± 0.08	437 ± 65	438 ± 35	12.36 ± 1.07
Hβ Broad	41.10 ± 0.04	5481 ± 330	2029 ± 31	53.10 ± 2.31
[O III] 5007	40.76 ± 0.03	437 ± 65	438 ± 35	25.13 ± 1.24
He I Narrow	—	—	—	—
He I Broad	39.55 ± 0.33	1196 ± 63	508 ± 25	1.57 ± 0.72
[O I] 6300	39.81 ± 0.09	373 ± 63	158 ± 25	2.85 ± 0.38
H α Narrow	40.86 ± 0.01	373 ± 63	158 ± 25	32.17 ± 0.51
Hα Broad	41.78 ± 0.01	3454 ± 71	1973 ± 39	267.84 ± 2.27
[N II] 6585	40.62 ± 0.02	373 ± 63	158 ± 25	18.63 ± 0.43
[S II] 6718	40.37 ± 0.03	373 ± 63	158 ± 25	10.42 ± 0.40
[S II] 6732	40.18 ± 0.04	373 ± 63	158 ± 25	6.84 ± 0.40

Emission Summary

H α broad SNR	11.04
H β broad SNR	2.49
H γ broad SNR	0.62
AGN frac	0.30
Host frac	0.70
$\log L_{5100, \text{Host}}$	43.45
Fe II/H β	0.17
Fe II/[O III]	0.37

Quality Flags

spurious_hab/hbb	0/0
15100	1
balmer	1
balmer_snr	2
hb_width	0
balmer_width	0