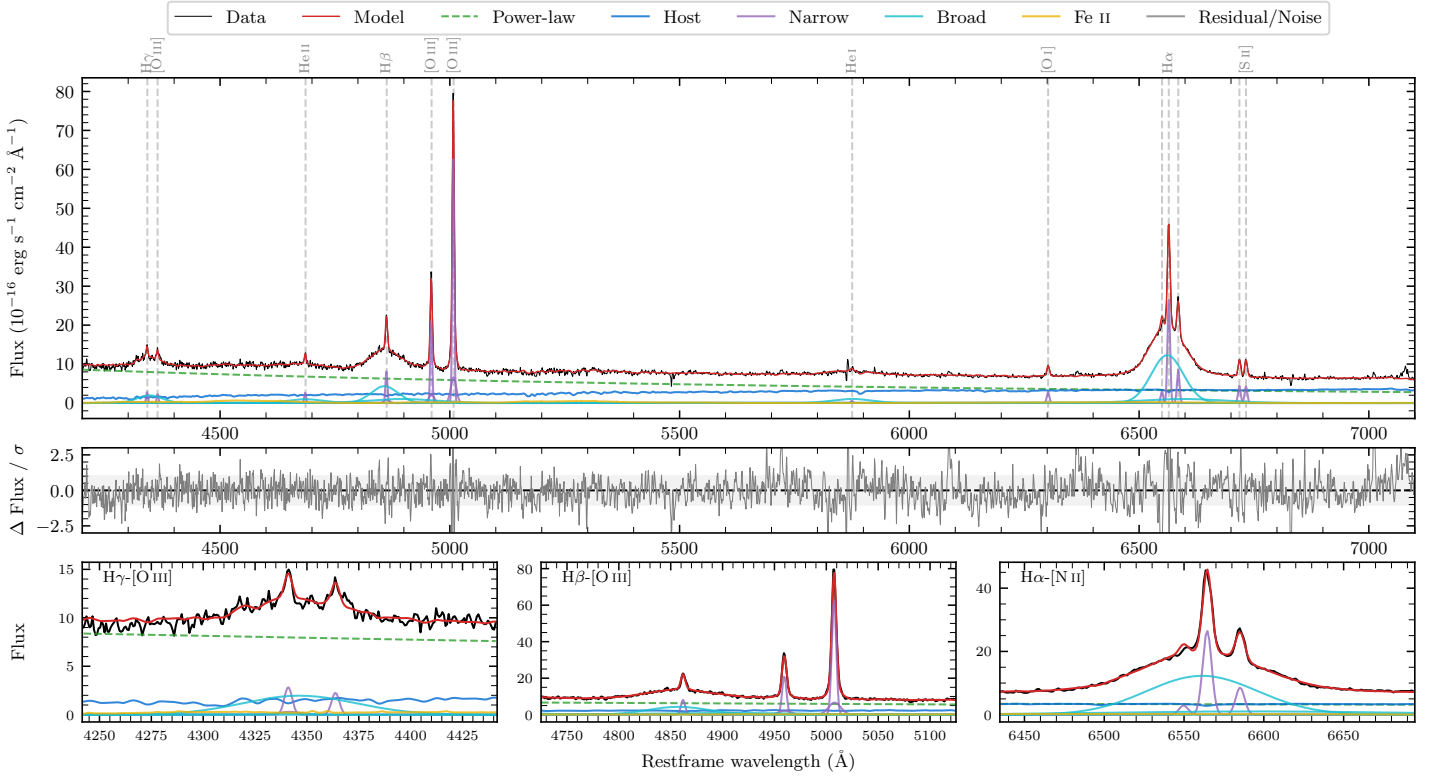
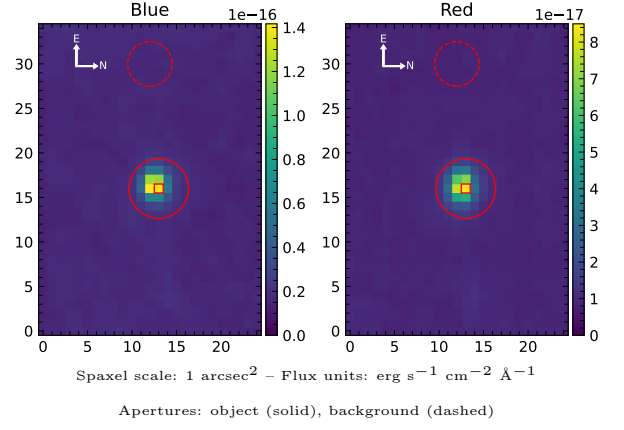


SDSS J024545.49–030449.6

Spectrum ID	15638721_sp2	Spectrum type	Sy 1.5
Alt name	g0245455–030450	Quality flag	good
z	0.0745	AGN reference	6dFGS
RA, Dec	41.4396, –3.0805	MW $E(B - V)$	0.028
MJD	60203.68	Power law α_ν	0.13 ± 0.11
SNR/ \AA B/R	17.2/23.7	$\log L_{5100, \text{AGN}}$	43.60 ± 0.02
Obs airmass	1.16	$\log H\beta_{\text{Br}}/[\text{O III}]$	0.06 ± 0.01
SMSS ID	15638721	$\log M_{L5100}/M_\odot$	8.09 ± 0.02
Neighbour	12.3", 15638445	$\log M_{\text{H}\alpha}/M_\odot$	7.87 ± 0.02
SMSS $\langle r_6''_{\text{ap}} \rangle$	16.83 ± 0.07	$\log M_{\text{H}\beta}/M_\odot$	8.13 ± 0.03
2MASS K_{ext}	13.55 ± 0.17	$\log M_{[\text{O III}]} / M_\odot$	8.27 ± 0.02



Emission Line Measurements

Line	$\log L$ (erg s ⁻¹)	FWHM (km s ⁻¹)	σ (km s ⁻¹)	EW (Å)
H γ Narrow	40.40 ± 0.07	322 ± 62	203 ± 26	2.30 ± 0.27
Hγ Broad	41.31 ± 0.03	4220 ± 258	1615 ± 55	18.50 ± 0.65
[O III] 4364	40.19 ± 0.09	302 ± 63	128 ± 25	1.43 ± 0.17
He II Narrow	40.29 ± 0.06	302 ± 63	128 ± 25	2.08 ± 0.17
He II Broad	41.14 ± 0.04	5825 ± 193	2474 ± 81	15.01 ± 0.79
H β Narrow	40.90 ± 0.02	322 ± 62	204 ± 26	9.33 ± 0.33
Hβ Broad	41.87 ± 0.01	4796 ± 115	2278 ± 75	86.67 ± 1.22
[O III] 5007	41.81 ± 0.01	322 ± 62	204 ± 26	79.30 ± 0.39
He I Narrow	39.71 ± 0.15	302 ± 63	128 ± 25	0.89 ± 0.25
He I Broad	41.22 ± 0.02	5096 ± 195	2164 ± 82	28.90 ± 0.83
[O I] 6300	40.43 ± 0.02	302 ± 63	128 ± 25	5.53 ± 0.21
H α Narrow	41.44 ± 0.01	302 ± 63	128 ± 25	60.47 ± 0.36
Hα Broad	42.29 ± 0.01	3924 ± 66	1654 ± 41	428.14 ± 1.57
[N II] 6585	40.95 ± 0.01	302 ± 63	128 ± 25	19.77 ± 0.36
[S II] 6718	40.66 ± 0.02	302 ± 63	128 ± 25	10.74 ± 0.26
[S II] 6732	40.65 ± 0.02	302 ± 63	128 ± 25	10.49 ± 0.33

Emission Summary

H α broad SNR	25.56
H β broad SNR	10.06
H γ broad SNR	4.11
AGN frac	0.72
Host frac	0.28
$\log L_{5100, \text{Host}}$	43.19
Fe II/H β	0.29
Fe II/[O III]	0.33

Quality Flags

spurious_hab/hbb	0/0
15100	0
balmer	0
balmer_snr	0
hb_width	0
balmer_width	0