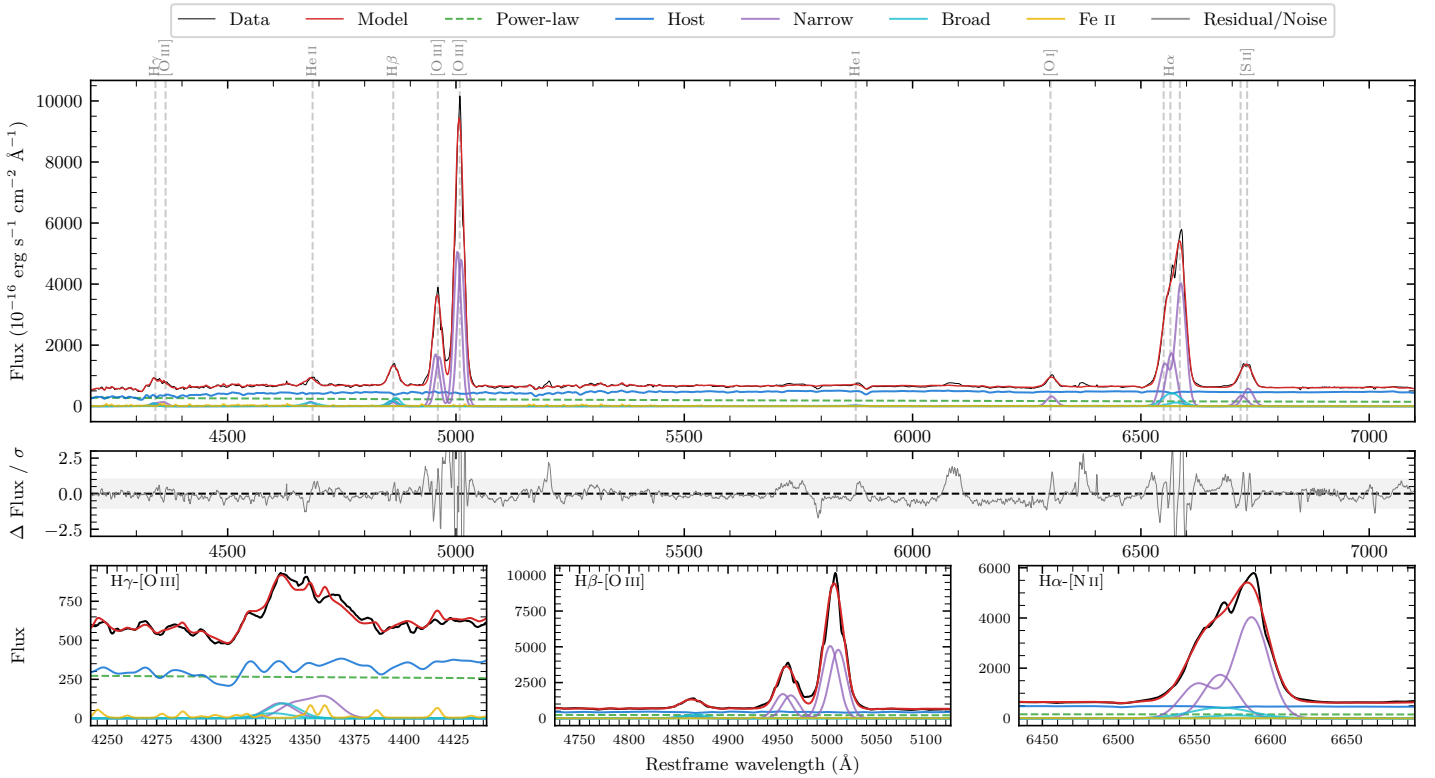
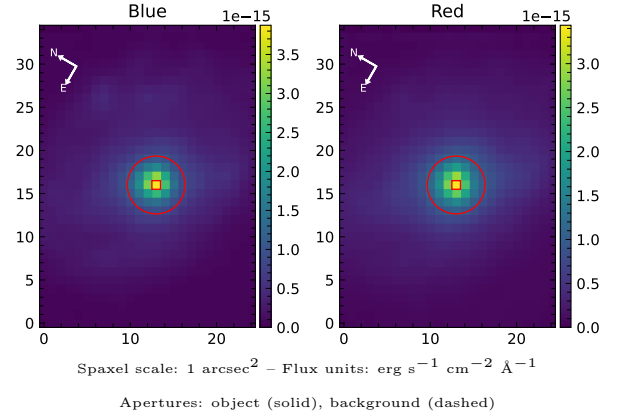


# M 77

Spectrum ID	15617931_sp1	Spectrum type	Sy 2
Alt name	NGC 1068	Quality flag	good
$z$	0.0036	AGN reference	S+1994
RA, Dec	40.6696, -0.0133	MW $E(B - V)$	0.029
MJD	60915.78	Power law $\alpha_\nu$	$-0.75 \pm 0.45$
SNR/ $\text{\AA}$ B/R	8.8/13.0	$\log L_{5100, \text{AGN}}$	$42.34 \pm 0.09$
Obs airmass	1.18	$\log H\beta_{\text{Br}}/[\text{O III}]$	—
SMSS ID	15617931	$\log M_{L5100}/M_\odot$	—
Neighbour	5.8", 2027963543	$\log M_{\text{H}\alpha}/M_\odot$	—
SMSS $\langle r_{6''}^{\text{ap}} \rangle$	$11.62 \pm 0.15$	$\log M_{\text{H}\beta}/M_\odot$	—
2MASS $K_{\text{ext}}$	$5.79 \pm 0.02$	$\log M_{[\text{O III}]} / M_\odot$	—



## Emission Line Measurements

Line	$\log L$ (erg s <sup>-1</sup> )	FWHM (km s <sup>-1</sup> )	$\sigma$ (km s <sup>-1</sup> )	EW (Å)
H $\gamma$ Narrow	$39.84 \pm 0.25$	$1335 \pm 63$	$558 \pm 26$	$13.20 \pm 1.58$
<b>H<math>\gamma</math> Broad</b>	—	—	—	—
[O III] 4364	$39.69 \pm 0.13$	$1189 \pm 73$	$505 \pm 30$	$9.34 \pm 1.53$
He II Narrow	$39.76 \pm 0.19$	$1189 \pm 73$	$505 \pm 30$	$12.04 \pm 1.42$
<b>He II Broad</b>	<b><math>39.99 \pm 0.15</math></b>	<b><math>2486 \pm 98</math></b>	<b><math>1056 \pm 41</math></b>	<b><math>20.20 \pm 2.00</math></b>
H $\beta$ Narrow	$40.14 \pm 0.23$	$1335 \pm 63$	$558 \pm 26$	$30.29 \pm 1.67$
<b>H<math>\beta</math> Broad</b>	—	—	—	—
[O III] 5007	$41.61 \pm 0.01$	$1335 \pm 63$	$559 \pm 26$	$946.54 \pm 2.23$
He I Narrow	$39.10 \pm 0.37$	$1189 \pm 73$	$505 \pm 30$	$3.54 \pm 1.60$
<b>He I Broad</b>	<b><math>39.11 \pm 0.38</math></b>	<b><math>1353 \pm 113</math></b>	<b><math>574 \pm 47</math></b>	<b><math>3.49 \pm 1.67</math></b>
[O I] 6300	$40.23 \pm 0.02$	$1189 \pm 73$	$505 \pm 30$	$51.58 \pm 1.55$
H $\alpha$ Narrow	$41.04 \pm 0.07$	$1189 \pm 73$	$505 \pm 30$	$306.07 \pm 3.25$
<b>H<math>\alpha</math> Broad</b>	—	—	—	—
[N II] 6585	$41.40 \pm 0.05$	$1189 \pm 73$	$505 \pm 30$	$714.90 \pm 3.25$
[S II] 6718	$40.28 \pm 0.04$	$1189 \pm 73$	$505 \pm 30$	$63.57 \pm 1.86$
[S II] 6732	$40.51 \pm 0.03$	$1189 \pm 73$	$505 \pm 30$	$107.36 \pm 1.88$

## Emission Summary

H $\alpha$ broad SNR	0.00
H $\beta$ broad SNR	0.00
H $\gamma$ broad SNR	0.00
AGN frac	0.33
Host frac	0.67
$\log L_{5100, \text{Host}}$	42.65
Fe II/H $\beta$	—
Fe II/[O III]	0.03

## Quality Flags

spurious_hab/hbb	1/0
15100	1
balmer	2
balmer_snr	2
hb_width	2
balmer_width	2