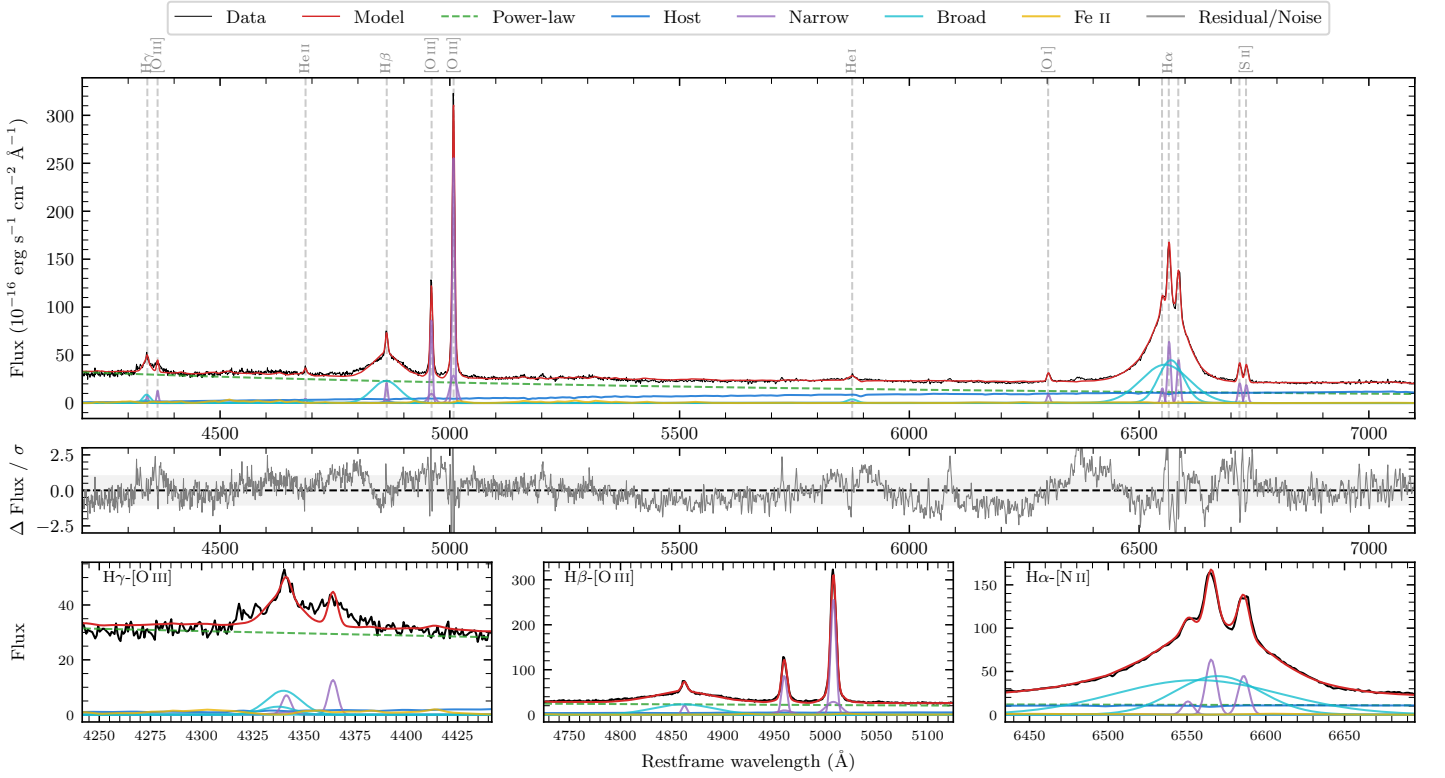
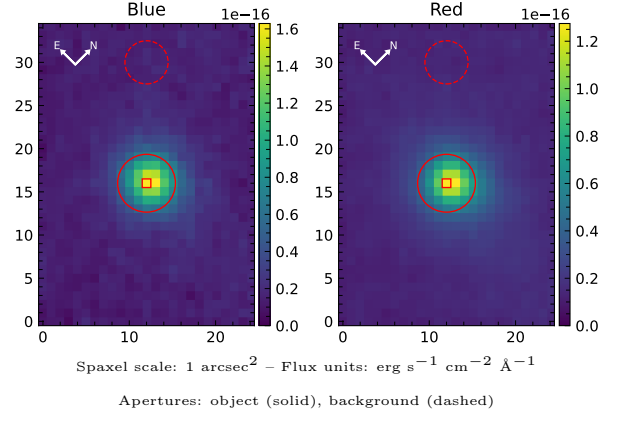


# NGC 985

Spectrum ID	15351439_sp1	Spectrum type	Sy 1.5
Alt name	g0234378-084716	Quality flag	good
$z$	0.0426	AGN reference	6dFGS
RA, Dec	38.6576, -8.7878	MW $E(B - V)$	0.028
MJD	60179.77	Power law $\alpha_\nu$	$0.34 \pm 0.11$
SNR/ $\text{\AA}$ B/R	12.8/19.8	$\log L_{5100, \text{AGN}}$	$43.65 \pm 0.02$
Obs airmass	1.08	$\log H\beta_{\text{Br}}/[\text{O III}]$	$-0.10 \pm 0.04$
SMSS ID	15351439	$\log M_{L5100}/M_\odot$	$8.01 \pm 0.11$
Neighbour	3.9", 15351438	$\log M_{H\alpha}/M_\odot$	$8.03 \pm 0.03$
SMSS $\langle r_6'' \text{ap} \rangle$	$14.33 \pm 0.01$	$\log M_{H\beta}/M_\odot$	$8.04 \pm 0.11$
2MASS $K_{\text{ext}}$	$10.54 \pm 0.03$	$\log M_{[\text{O III}]} / M_\odot$	$8.26 \pm 0.11$



## Emission Line Measurements

Line	$\log L$ ( $\text{erg s}^{-1}$ )	FWHM ( $\text{km s}^{-1}$ )	$\sigma$ ( $\text{km s}^{-1}$ )	EW ( $\text{\AA}$ )
H $\gamma$ Narrow	$40.38 \pm 0.19$	$401 \pm 63$	$257 \pm 34$	$1.88 \pm 0.36$
<b>H<math>\gamma</math> Broad</b>	<b><math>41.08 \pm 0.09</math></b>	<b><math>1384 \pm 171</math></b>	<b><math>484 \pm 62</math></b>	<b><math>8.42 \pm 0.43</math></b>
[O III] 4364	$40.51 \pm 0.08$	$375 \pm 63$	$158 \pm 25$	$2.58 \pm 0.23$
He II Narrow	$40.13 \pm 0.18$	$375 \pm 63$	$158 \pm 25$	$1.27 \pm 0.23$
<b>He II Broad</b>	<b><math>40.56 \pm 0.25</math></b>	<b><math>1352 \pm 259</math></b>	<b><math>574 \pm 110</math></b>	<b><math>2.98 \pm 0.43</math></b>
H $\beta$ Narrow	$40.89 \pm 0.05$	$401 \pm 63$	$257 \pm 34$	$8.05 \pm 0.43$
<b>H<math>\beta</math> Broad</b>	<b><math>41.90 \pm 0.04</math></b>	<b><math>4257 \pm 506</math></b>	<b><math>1603 \pm 196</math></b>	<b><math>80.38 \pm 0.90</math></b>
[O III] 5007	$42.00 \pm 0.01$	$401 \pm 63$	$257 \pm 34$	$109.72 \pm 0.52$
He I Narrow	$39.65 \pm 0.29$	$375 \pm 63$	$158 \pm 25$	$0.71 \pm 0.22$
<b>He I Broad</b>	<b><math>40.70 \pm 0.08</math></b>	<b><math>1332 \pm 125</math></b>	<b><math>566 \pm 52</math></b>	<b><math>7.63 \pm 0.43</math></b>
[O I] 6300	$40.52 \pm 0.05$	$375 \pm 63$	$158 \pm 25$	$6.32 \pm 0.28$
H $\alpha$ Narrow	$41.39 \pm 0.02$	$375 \pm 63$	$158 \pm 25$	$51.08 \pm 0.57$
<b>H<math>\alpha</math> Broad</b>	<b><math>42.56 \pm 0.01</math></b>	<b><math>3880 \pm 97</math></b>	<b><math>1672 \pm 31</math></b>	<b><math>763.04 \pm 1.48</math></b>
[N II] 6585	$41.24 \pm 0.02$	$375 \pm 63$	$158 \pm 25$	$36.41 \pm 0.58$
[S II] 6718	$40.91 \pm 0.02$	$375 \pm 63$	$158 \pm 25$	$17.74 \pm 0.35$
[S II] 6732	$40.87 \pm 0.02$	$375 \pm 63$	$158 \pm 25$	$16.28 \pm 0.35$

## Emission Summary

H $\alpha$ broad SNR	36.71
H $\beta$ broad SNR	10.59
H $\gamma$ broad SNR	5.08
AGN frac	0.80
Host frac	0.19
$\log L_{5100, \text{Host}}$	43.03
Fe II/H $\beta$	0.29
Fe II/[O III]	0.23

## Quality Flags

spurious_hab/hbb	0/0
15100	0
balmer	0
balmer_snr	0
hb_width	0
balmer_width	0