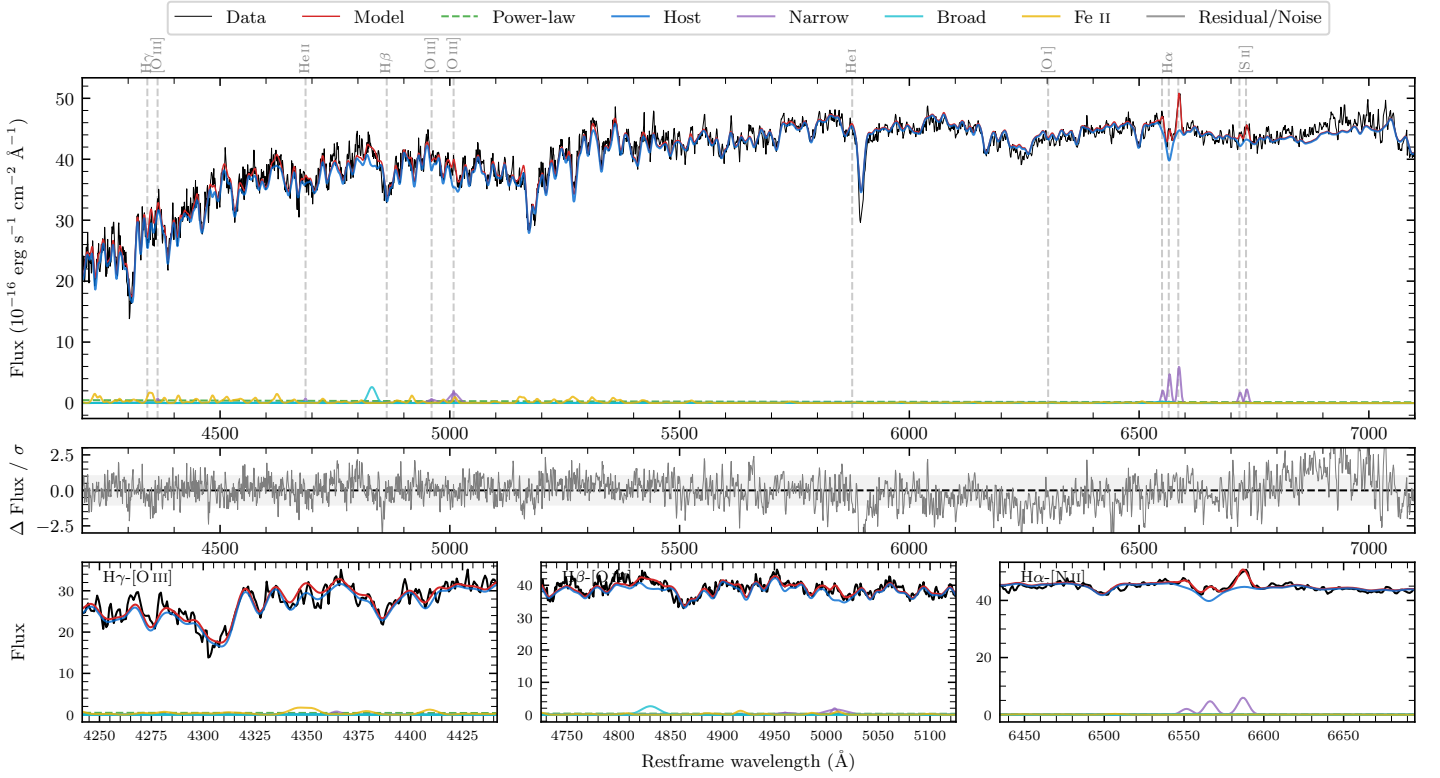
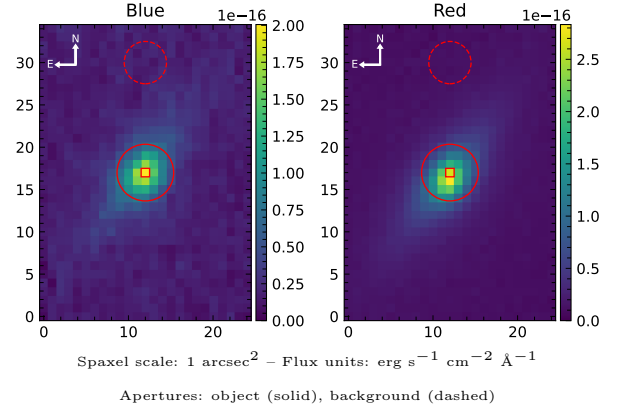


MCG-01-06-073

Spectrum ID	15271883_sp1	Spectrum type	SF
Alt name	MCG -1-06-073	Quality flag	good
z	0.0370	AGN reference	PGC
RA, Dec	33.3430, -2.3422	MW $E(B-V)$	0.026
MJD	60961.61	Power law α_ν	0.49 ± 0.01
SNR/ \AA B/R	23.0/47.4	$\log L_{5100, \text{AGN}}$	41.67 ± 0.20
Obs airmass	1.15	$\log H\beta_{\text{Br}}/[\text{O III}]$	—
SMSS ID	15271883	$\log M_{L5100}/M_\odot$	—
Neighbour	7.9", 2027497097	$\log M_{H\alpha}/M_\odot$	—
SMSS $\langle r_{6'' \text{ap}} \rangle$	14.61 ± 0.06	$\log M_{H\beta}/M_\odot$	—
2MASS K_{ext}	10.33 ± 0.03	$\log M_{[\text{O III}]} / M_\odot$	—



Emission Line Measurements

Line	$\log L$ (erg s $^{-1}$)	FWHM (km s $^{-1}$)	σ (km s $^{-1}$)	EW (Å)
H γ Narrow	—	—	—	—
Hγ Broad	—	—	—	—
[O III] 4364	—	—	—	—
He II Narrow	39.20 ± 0.35	372 ± 62	157 ± 25	14.04 ± 11.08
He II Broad	—	—	—	—
H β Narrow	—	—	—	—
Hβ Broad	—	—	—	—
[O III] 5007	40.25 ± 0.09	592 ± 79	531 ± 27	183.90 ± 25.20
He I Narrow	—	—	—	—
He I Broad	—	—	—	—
[O I] 6300	—	—	—	—
H α Narrow	40.13 ± 0.04	372 ± 62	157 ± 25	275.52 ± 17.43
Hα Broad	—	—	—	—
[N II] 6585	40.23 ± 0.03	372 ± 62	157 ± 25	351.67 ± 18.64
[S II] 6718	39.70 ± 0.10	372 ± 62	157 ± 25	108.75 ± 18.74
[S II] 6732	39.82 ± 0.08	372 ± 62	157 ± 25	142.94 ± 18.28

Emission Summary

H α broad SNR	0.27
H β broad SNR	0.00
H γ broad SNR	0.00
AGN frac	0.01
Host frac	0.99
$\log L_{5100, \text{Host}}$	43.78
Fe II/H β	—
Fe II/[O III]	2.69

Quality Flags

spurious_hab/hbb	0/0
15100	2
balmer	2
balmer_snr	2
hb_width	2
balmer_width	2