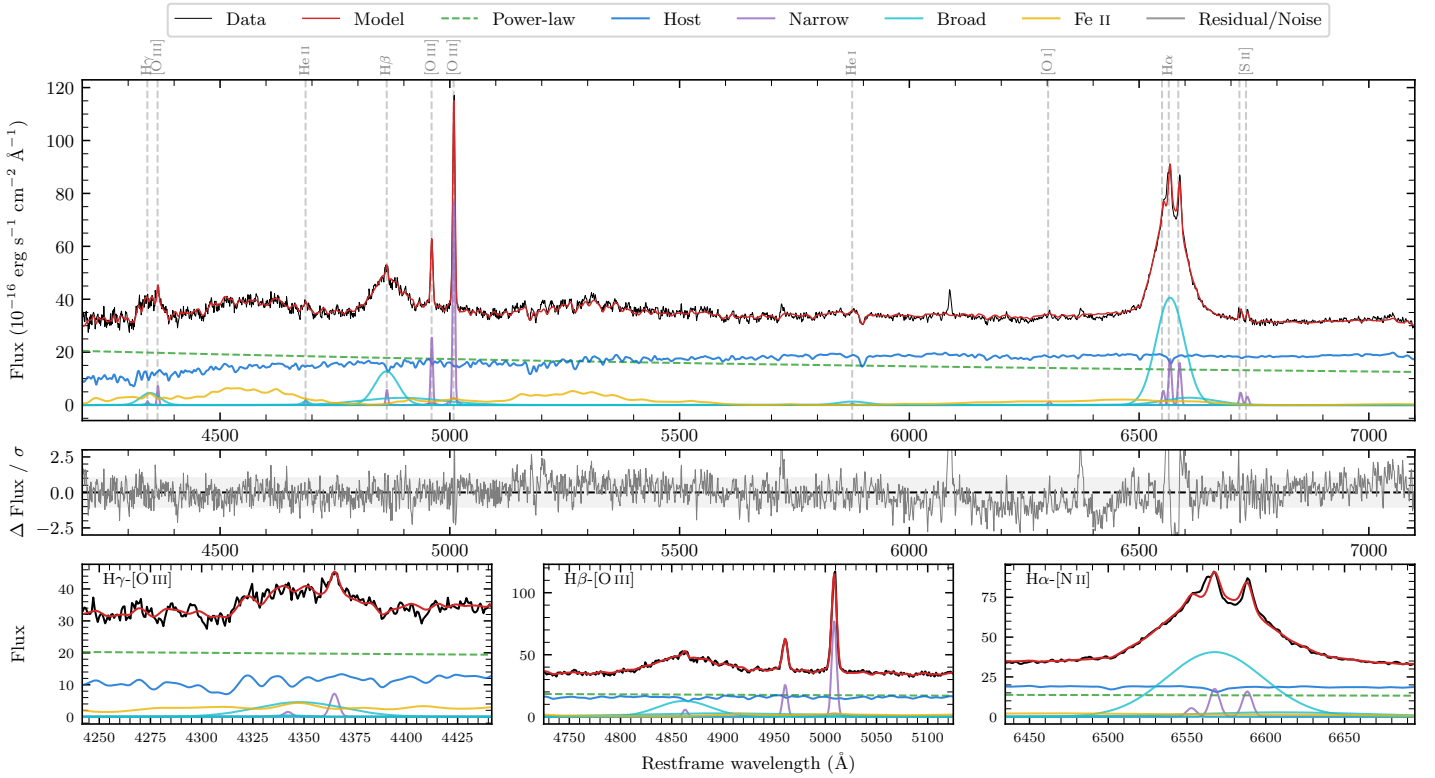
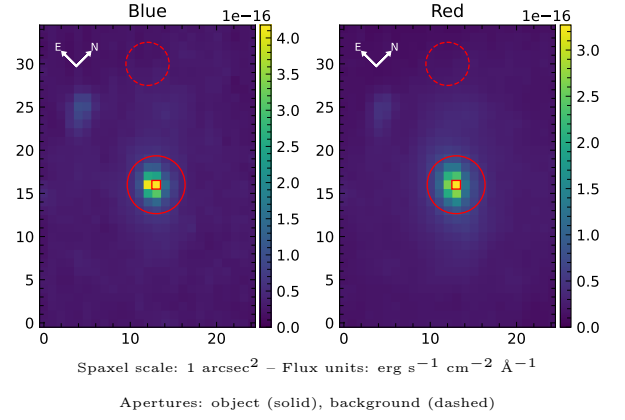


NGC 7214

Spectrum ID	1471955_sp1	Spectrum type	Sy 1.5
Alt name	g2209077-274834	Quality flag	good
z	0.0227	AGN reference	6dFGS
RA, Dec	332.2818, -27.8095	MW $E(B - V)$	0.016
MJD	60164.67	Power law α_ν	-1.06 ± 0.13
SNR/ \AA B/R	22.1/38.6	$\log L_{5100, \text{AGN}}$	43.01 ± 0.02
Obs airmass	1.03	$\log H\beta_{\text{Br}}/[\text{O III}]$	0.21 ± 0.13
SMSS ID	1471955	$\log M_{L5100}/M_\odot$	7.62 ± 0.02
Neighbour	1.0", 2002369346	$\log M_{\text{H}\alpha}/M_\odot$	7.33 ± 0.02
SMSS $\langle r_{6''} \text{ap} \rangle$	14.45 ± 0.05	$\log M_{\text{H}\beta}/M_\odot$	7.52 ± 0.08
2MASS K_{ext}	9.33 ± 0.03	$\log M_{[\text{O III}]} / M_\odot$	7.55 ± 0.04



Emission Line Measurements

Line	$\log L$ (erg s ⁻¹)	FWHM (km s ⁻¹)	σ (km s ⁻¹)	EW (Å)
H γ Narrow	39.02 ± 0.36	346 ± 63	209 ± 30	0.46 ± 0.39
Hγ Broad	40.49 ± 0.05	3289 ± 215	1249 ± 35	13.06 ± 0.75
[O III] 4364	39.65 ± 0.09	339 ± 63	143 ± 25	1.96 ± 0.24
He II Narrow	39.16 ± 0.26	339 ± 63	143 ± 25	0.68 ± 0.20
He II Broad	—	—	—	—
H β Narrow	39.65 ± 0.09	346 ± 63	210 ± 30	2.14 ± 0.37
Hβ Broad	$40.99^{+0.24}_{-0.02}$	3738 ± 37	1393 ± 25	47.23 ± 0.71
[O III] 5007	40.79 ± 0.01	346 ± 63	210 ± 30	30.39 ± 0.39
He I Narrow	38.70 ± 0.33	339 ± 63	143 ± 25	0.29 ± 0.15
He I Broad	40.12 ± 0.06	3939 ± 69	1673 ± 28	7.54 ± 1.15
[O I] 6300	39.08 ± 0.15	339 ± 63	143 ± 25	0.73 ± 0.16
H α Narrow	40.22 ± 0.02	339 ± 63	143 ± 25	10.51 ± 0.24
Hα Broad	41.62 ± 0.01	3392 ± 64	1320 ± 25	266.57 ± 0.79
[N II] 6585	40.18 ± 0.02	339 ± 63	143 ± 25	9.57 ± 0.23
[S II] 6718	39.65 ± 0.05	339 ± 63	143 ± 25	2.90 ± 0.20
[S II] 6732	39.48 ± 0.07	339 ± 63	143 ± 25	1.99 ± 0.20

Emission Summary

H α broad SNR	25.85
H β broad SNR	7.72
H γ broad SNR	3.09
AGN frac	0.52
Host frac	0.48
$\log L_{5100, \text{Host}}$	42.98
Fe II/H β	—
Fe II/[O III]	—

Quality Flags

spurious_hab/hbb	0/2
15100	0
balmer	0
balmer_snr	0
hb_width	0
balmer_width	0