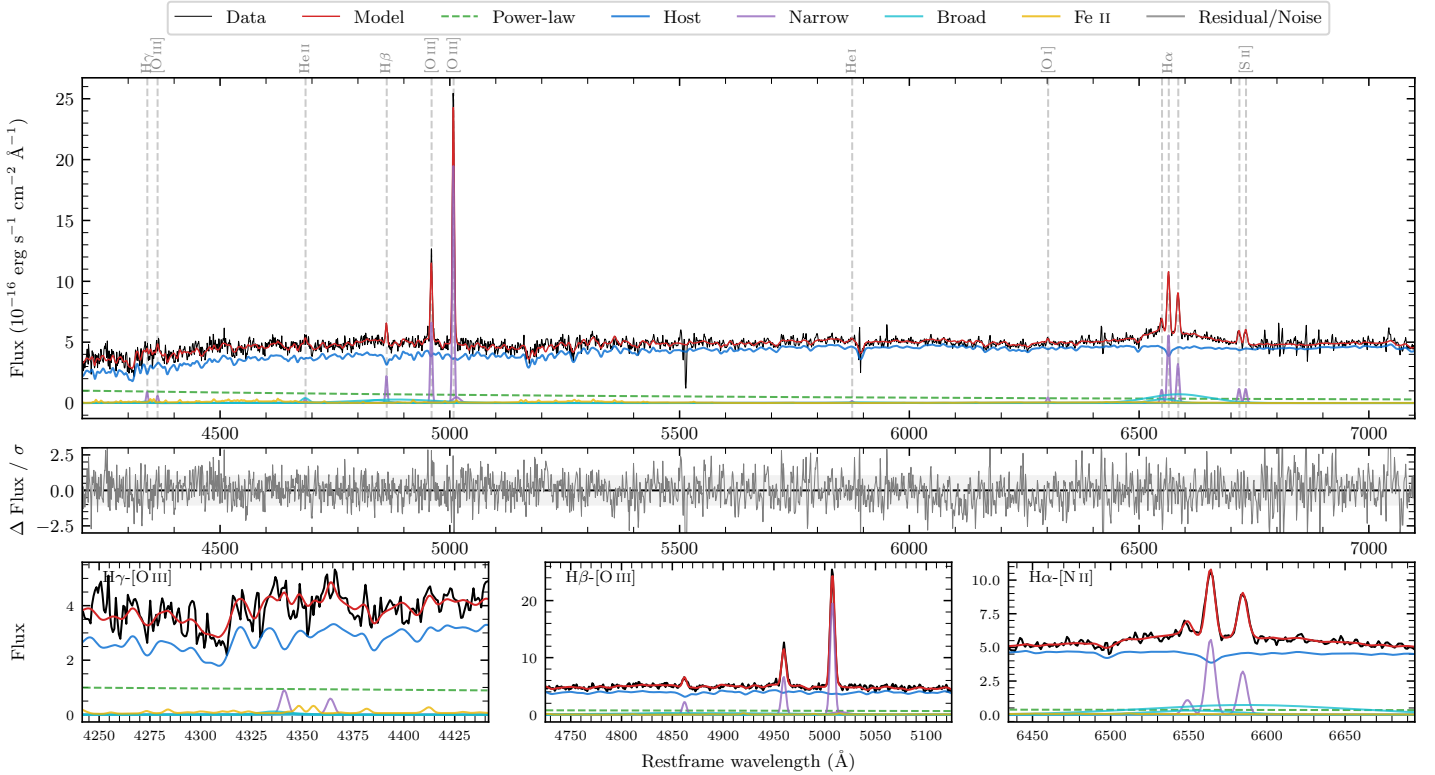
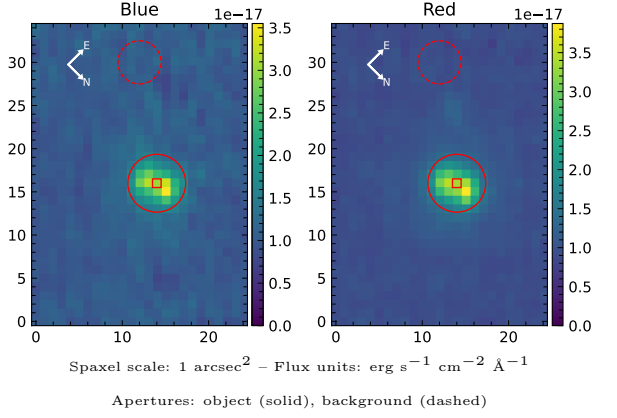


LEDA 863645

Spectrum ID	14681621_sp1	Spectrum type	Sy 1.5+
Alt name	g0259401-184736	Quality flag	good
z	0.0695	AGN reference	6dFGS
RA, Dec	44.9172, -18.7934	MW $E(B - V)$	0.037
MJD	60181.77	Power law α_ν	0.35 ± 0.16
SNR/ \AA B/R	13.1/23.7	$\log L_{5100, \text{AGN}}$	42.59 ± 0.06
Obs airmass	1.03	$\log H\beta_{\text{Br}}/[\text{O III}]$	< -0.48
SMSS ID	14681621	$\log M_{L5100}/M_\odot$	—
Neighbour	None $< 15''$	$\log M_{\text{H}\alpha}/M_\odot$	7.62 ± 0.05
SMSS $\langle r_6''_{\text{ap}} \rangle$	16.59 ± 0.21	$\log M_{\text{H}\beta}/M_\odot$	—
2MASS K_{ext}	12.75 ± 0.12	$\log M_{[\text{O III}]} / M_\odot$	—



Emission Line Measurements

Line	$\log L$ (erg s ⁻¹)	FWHM (km s ⁻¹)	σ (km s ⁻¹)	EW (Å)
H γ Narrow	39.77 ± 0.15	315 ± 63	220 ± 32	5.26 ± 1.69
Hγ Broad	—	—	—	—
[O III] 4364	39.55 ± 0.20	306 ± 63	130 ± 25	3.22 ± 0.93
He II Narrow	39.40 ± 0.31	306 ± 63	130 ± 25	2.69 ± 0.95
He II Broad	—	—	—	—
H β Narrow	40.21 ± 0.05	315 ± 63	220 ± 32	19.13 ± 2.02
Hβ Broad	< 40.70	—	—	—
[O III] 5007	41.17 ± 0.01	315 ± 63	220 ± 32	187.41 ± 2.46
He I Narrow	39.12 ± 0.30	306 ± 63	130 ± 25	2.39 ± 1.17
He I Broad	39.83 ± 0.29	4522 ± 75	1920 ± 31	12.27 ± 4.82
[O I] 6300	39.58 ± 0.11	306 ± 63	130 ± 25	8.29 ± 1.27
H α Narrow	40.70 ± 0.01	306 ± 63	130 ± 25	119.72 ± 1.66
Hα Broad	41.25 ± 0.02	6097 ± 281	2389 ± 42	423.25 ± 8.74
[N II] 6585	40.46 ± 0.02	306 ± 63	130 ± 25	69.35 ± 1.67
[S II] 6718	40.03 ± 0.04	306 ± 63	130 ± 25	27.09 ± 1.68
[S II] 6732	40.03 ± 0.04	306 ± 63	130 ± 25	27.31 ± 1.71

Emission Summary

H α broad SNR	2.73
H β broad SNR	0.69
H γ broad SNR	0.00
AGN frac	0.14
Host frac	0.86
$\log L_{5100, \text{Host}}$	43.36
Fe II/H β	—
Fe II/[O III]	—

Quality Flags

spurious_hab/hbb	0/1
15100	2
balmer	2
balmer_snr	2
hb_width	2
balmer_width	2