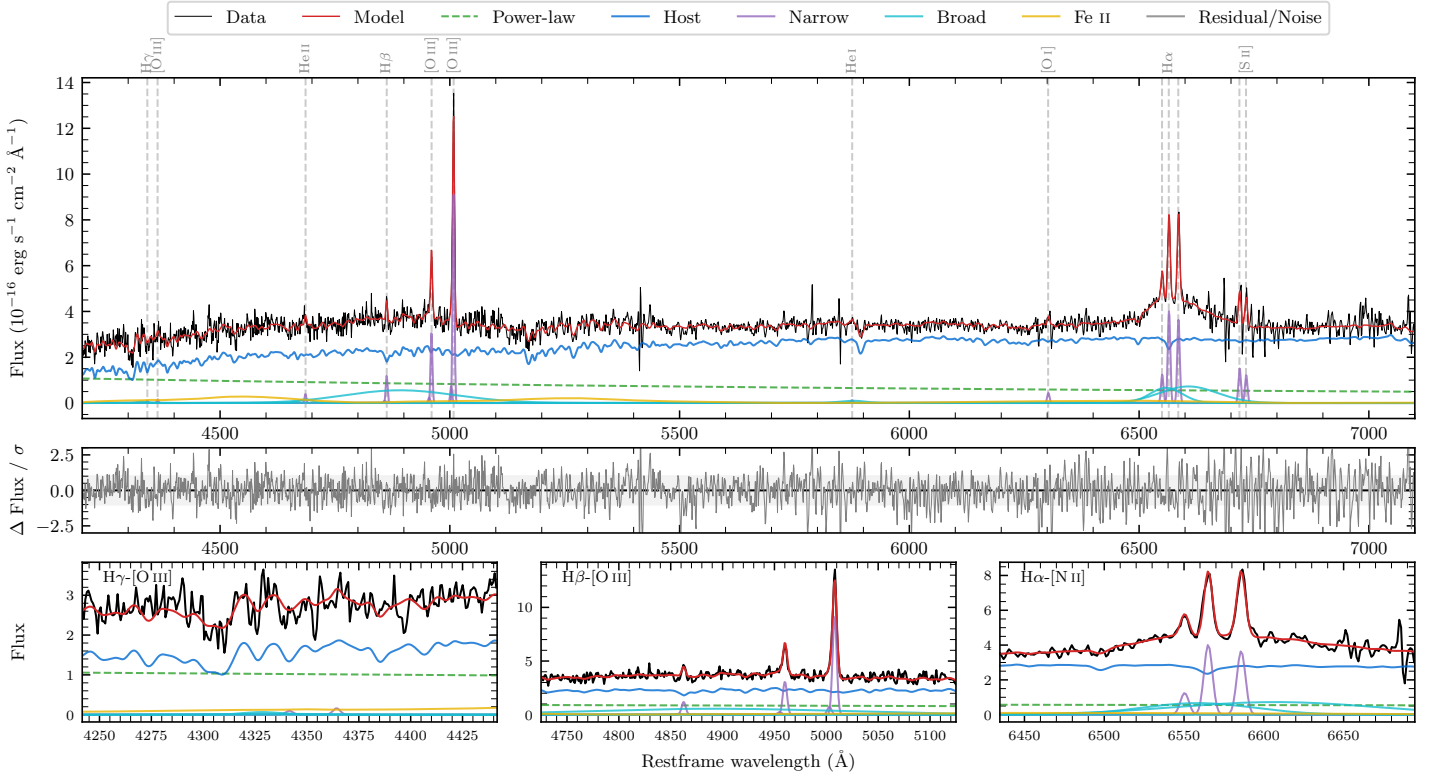
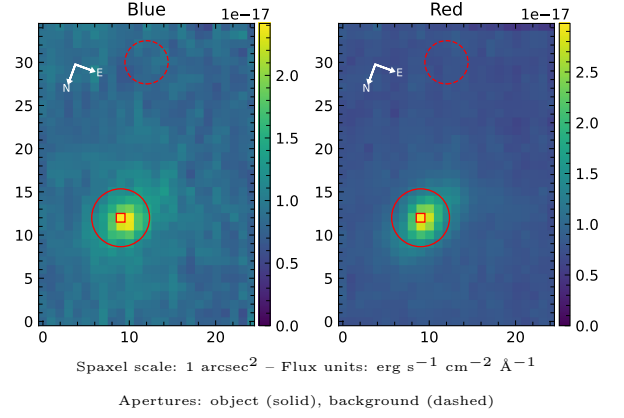


# LEDA 142719

Spectrum ID	14570893_sp1	Spectrum type	Sy 1.5+
Alt name	g0229211-204823	Quality flag	good
$z$	0.0885	AGN reference	6dFGS
RA, Dec	37.3376, -20.8064	MW $E(B-V)$	0.022
MJD	60171.78	Power law $\alpha_\nu$	$-0.53 \pm 0.58$
SNR/ $\text{\AA}$ B/R	11.0/18.0	$\log L_{5100, \text{AGN}}$	$42.91 \pm 0.07$
Obs airmass	1.02	$\log H\beta_{\text{Br}}/[\text{O III}]$	$< -0.33$
SMSS ID	14570893	$\log M_{L5100}/M_\odot$	—
Neighbour	None $< 15''$	$\log M_{\text{H}\alpha}/M_\odot$	$7.77 \pm 0.04$
SMSS $\langle r_6''_{\text{ap}} \rangle$	$17.18 \pm 0.13$	$\log M_{\text{H}\beta}/M_\odot$	—
2MASS $K_{\text{ext}}$	$12.86 \pm 0.14$	$\log M_{[\text{O III}]} / M_\odot$	—



## Emission Line Measurements

Line	$\log L$ (erg s <sup>-1</sup> )	FWHM (km s <sup>-1</sup> )	$\sigma$ (km s <sup>-1</sup> )	EW (Å)
H $\gamma$ Narrow	—	—	—	—
<b>H<math>\gamma</math> Broad</b>	—	—	—	—
[O III] 4364	$39.18 \pm 0.43$	$288 \pm 63$	$121 \pm 25$	$0.77 \pm 0.71$
He II Narrow	$39.60 \pm 0.26$	$288 \pm 63$	$121 \pm 25$	$2.22 \pm 0.74$
<b>He II Broad</b>	—	—	—	—
H $\beta$ Narrow	$40.13 \pm 0.08$	$297 \pm 63$	$145 \pm 26$	$8.01 \pm 0.92$
<b>H<math>\beta</math> Broad</b>	$< 40.70$	—	—	—
[O III] 5007	$41.03 \pm 0.01$	$297 \pm 63$	$145 \pm 26$	$66.45 \pm 1.07$
He I Narrow	$39.20 \pm 0.36$	$288 \pm 63$	$121 \pm 25$	$1.24 \pm 0.85$
<b>He I Broad</b>	<b><math>40.19 \pm 0.17</math></b>	<b><math>3413 \pm 64</math></b>	<b><math>1449 \pm 26</math></b>	<b><math>12.11 \pm 2.76</math></b>
[O I] 6300	$39.78 \pm 0.12$	$288 \pm 63$	$121 \pm 25$	$5.20 \pm 0.96$
H $\alpha$ Narrow	$40.76 \pm 0.02$	$288 \pm 63$	$121 \pm 25$	$52.52 \pm 0.92$
<b>H<math>\alpha</math> Broad</b>	<b><math>41.57 \pm 0.01</math></b>	<b><math>5842 \pm 206</math></b>	<b><math>2202 \pm 28</math></b>	<b><math>340.65 \pm 5.36</math></b>
[N II] 6585	$40.72 \pm 0.02$	$288 \pm 63$	$121 \pm 25$	$48.12 \pm 0.98$
[S II] 6718	$40.34 \pm 0.04$	$288 \pm 63$	$121 \pm 25$	$20.89 \pm 1.33$
[S II] 6732	$40.25 \pm 0.05$	$288 \pm 63$	$121 \pm 25$	$17.06 \pm 1.42$

## Emission Summary

H $\alpha$ broad SNR	4.01
H $\beta$ broad SNR	0.00
H $\gamma$ broad SNR	0.00
AGN frac	0.27
Host frac	0.73
$\log L_{5100, \text{Host}}$	43.34
Fe II/H $\beta$	—
Fe II/[O III]	—

## Quality Flags

spurious_hab/hbb	0/2
15100	1
balmer	2
balmer_snr	2
hb_width	2
balmer_width	2