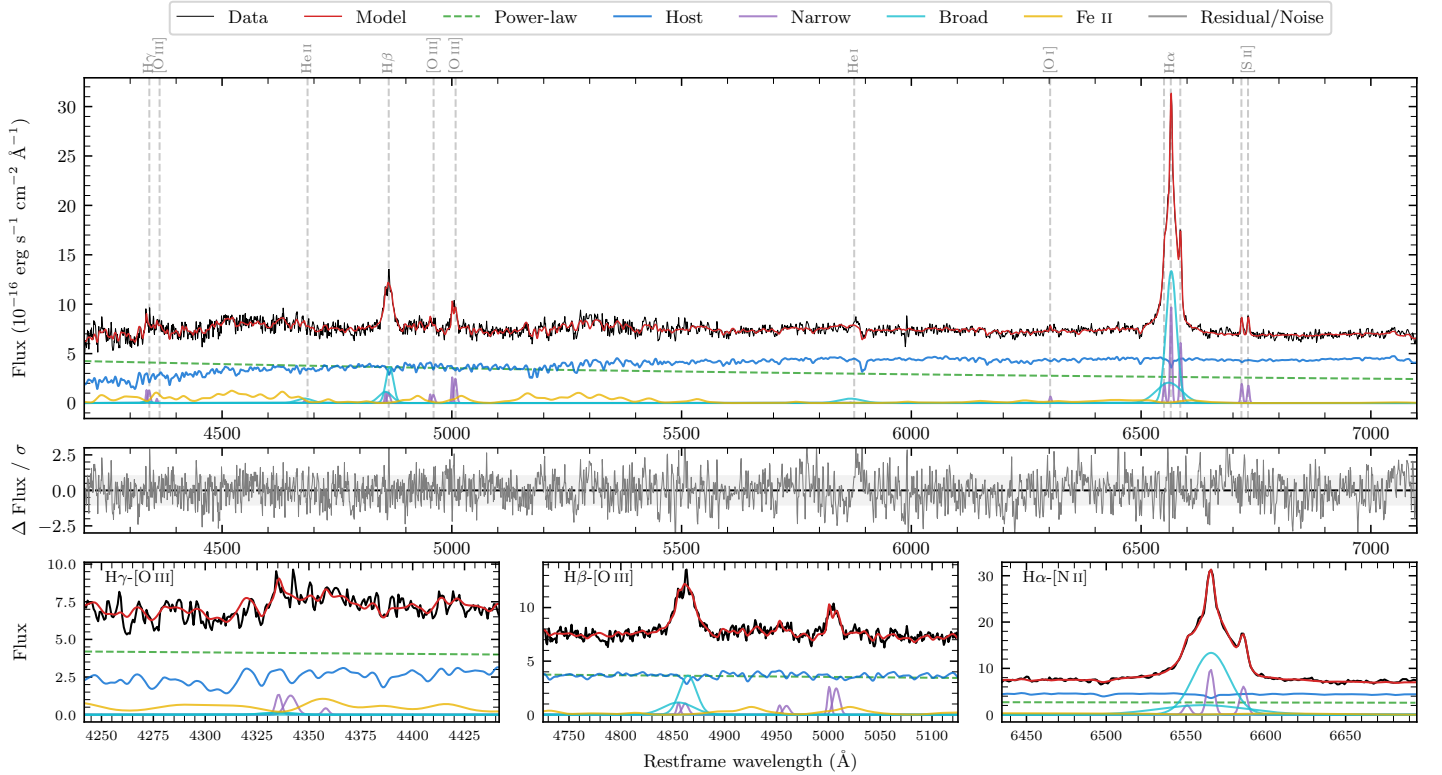
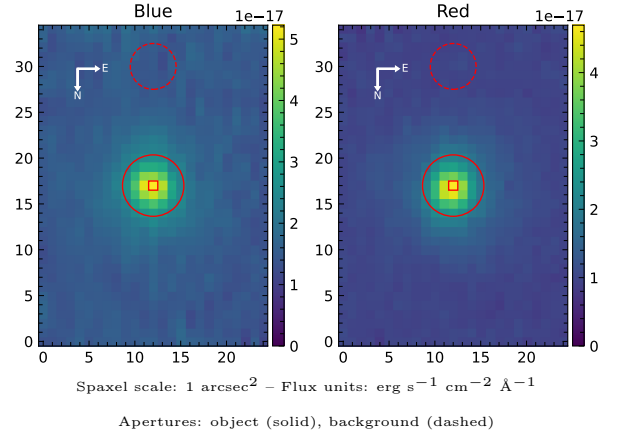


LEDA 947591

Spectrum ID	14423812_sp1	Spectrum type	Sy 1.2
Alt name	g0203490-124717	Quality flag	good
z	0.0523	AGN reference	6dFGS
RA, Dec	30.9543, -12.7880	MW $E(B - V)$	0.017
MJD	60206.66	Power law α_ν	-0.94 ± 0.14
SNR/ \AA B/R	17.3/28.7	$\log L_{5100, \text{AGN}}$	43.06 ± 0.03
Obs airmass	1.06	$\log H\beta_{\text{Br}}/[\text{O III}]$	0.59 ± 0.04
SMSS ID	14423812	$\log M_{L5100}/M_\odot$	6.77 ± 0.04
Neighbour	4.8", 2026285101	$\log M_{\text{H}\alpha}/M_\odot$	6.47 ± 0.05
SMSS $\langle r_6''_{\text{ap}} \rangle$	16.42 ± 0.02	$\log M_{\text{H}\beta}/M_\odot$	6.61 ± 0.05
2MASS K_{ext}	12.18 ± 0.12	$\log M_{[\text{O III}]} / M_\odot$	6.45 ± 0.07



Emission Line Measurements

Line	$\log L$ (erg s ⁻¹)	FWHM (km s ⁻¹)	σ (km s ⁻¹)	EW (Å)
H γ Narrow	39.97 ± 0.11	711 ± 66	251 ± 26	3.46 ± 0.33
Hγ Broad	—	—	—	—
[O III] 4364	39.04 ± 0.33	238 ± 63	100 ± 25	0.41 ± 0.23
He II Narrow	38.80 ± 0.43	238 ± 63	100 ± 25	0.25 ± 0.22
He II Broad	40.13 ± 0.11	2563 ± 71	1088 ± 29	5.42 ± 0.77
H β Narrow	39.93 ± 0.13	711 ± 66	251 ± 26	3.62 ± 0.33
Hβ Broad	40.91 ± 0.02	1370 ± 50	552 ± 27	33.81 ± 0.70
[O III] 5007	40.31 ± 0.03	711 ± 66	251 ± 26	8.97 ± 0.34
He I Narrow	—	—	—	—
He I Broad	40.29 ± 0.05	3005 ± 72	1276 ± 29	9.86 ± 0.69
[O I] 6300	39.38 ± 0.10	238 ± 63	100 ± 25	1.33 ± 0.19
H α Narrow	40.57 ± 0.02	238 ± 63	100 ± 25	21.43 ± 0.32
Hα Broad	41.56 ± 0.01	1319 ± 64	568 ± 25	207.93 ± 0.89
[N II] 6585	40.36 ± 0.02	238 ± 63	100 ± 25	13.38 ± 0.27
[S II] 6718	39.88 ± 0.04	238 ± 63	100 ± 25	4.46 ± 0.23
[S II] 6732	39.84 ± 0.04	238 ± 63	100 ± 25	4.13 ± 0.22

Emission Summary

H α broad SNR	35.28
H β broad SNR	10.55
H γ broad SNR	0.81
AGN frac	0.50
Host frac	0.50
$\log L_{5100, \text{Host}}$	43.06
Fe II/H β	1.98
Fe II/[O III]	7.72

Quality Flags

spurious_hab/hbb	0/0
15100	1
balmer	0
balmer_snr	2
hb_width	0
balmer_width	0