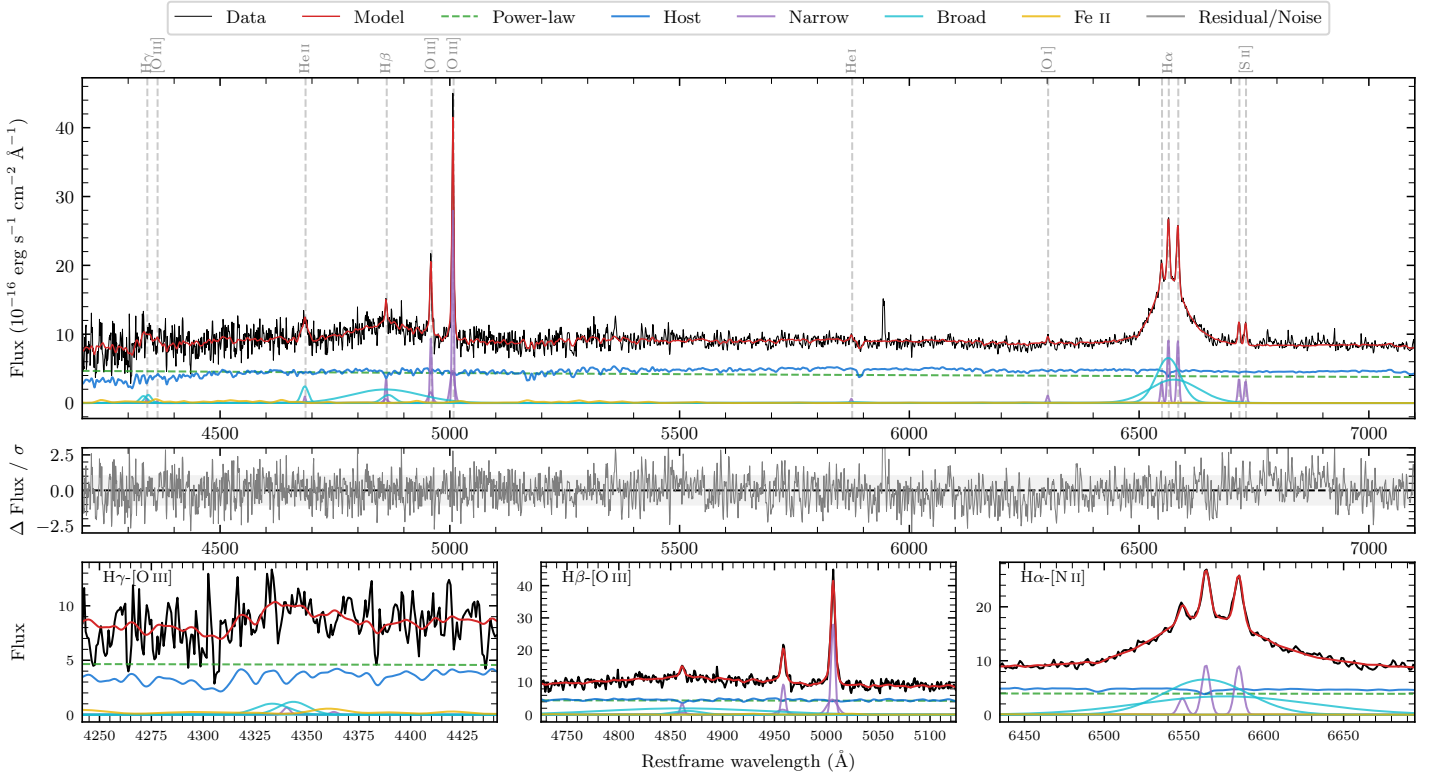
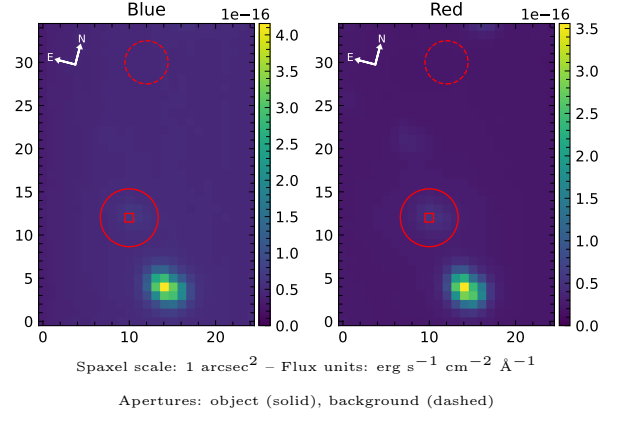


# 6dFGS gJ162318.9–301433

Spectrum ID	141486947_sp1	Spectrum type	Sy 1.2
Alt name	g1623189–301433	Quality flag	good
$z$	0.0598	AGN reference	6dFGS
RA, Dec	245.8288, –30.2426	MW $E(B - V)$	0.329
MJD	59440.36	Power law $\alpha_\nu$	$-1.60 \pm 0.09$
SNR/ $\text{\AA}$ B/R	8.5/16.8	$\log L_{5100, \text{AGN}}$	$43.28 \pm 0.03$
Obs airmass	1.00	$\log H\beta_{\text{Br}} / [\text{O III}]$	$0.33 \pm 0.03$
SMSS ID	141486947	$\log M_{L5100} / M_\odot$	$8.19 \pm 0.27$
Neighbour	9.0", 141486948	$\log M_{\text{H}\alpha} / M_\odot$	$7.54 \pm 0.02$
SMSS $\langle r_6^{\text{ap}} \rangle$	$17.12 \pm 0.11$	$\log M_{\text{H}\beta} / M_\odot$	$8.24 \pm 0.28$
2MASS $K_{\text{ext}}$	$12.67 \pm 0.12$	$\log M_{[\text{O III}]} / M_\odot$	$8.23 \pm 0.27$



## Emission Line Measurements

Line	$\log L$ (erg s <sup>-1</sup> )	FWHM (km s <sup>-1</sup> )	$\sigma$ (km s <sup>-1</sup> )	EW (Å)
H $\gamma$ Narrow	–	–	–	–
<b>H<math>\gamma</math> Broad</b>	<b>40.60 ± 0.12</b>	<b>1504 ± 136</b>	<b>535 ± 31</b>	<b>9.71 ± 1.41</b>
[O III] 4364	–	–	–	–
He II Narrow	39.59 ± 0.37	274 ± 63	115 ± 25	1.00 ± 0.54
<b>He II Broad</b>	<b>40.64 ± 0.09</b>	<b>1178 ± 62</b>	<b>500 ± 25</b>	<b>11.25 ± 1.16</b>
H $\beta$ Narrow	40.33 ± 0.10	299 ± 63	195 ± 28	5.54 ± 0.83
<b>H<math>\beta</math> Broad</b>	<b>41.58 ± 0.03</b>	<b>6283 ± 1827</b>	<b>3702 ± 79</b>	<b>99.40 ± 3.50</b>
[O III] 5007	41.25 ± 0.01	299 ± 63	195 ± 28	47.33 ± 0.88
He I Narrow	39.51 ± 0.26	274 ± 63	115 ± 25	0.92 ± 0.30
<b>He I Broad</b>	<b>39.82 ± 0.35</b>	<b>2451 ± 69</b>	<b>1041 ± 28</b>	<b>1.84 ± 0.98</b>
[O I] 6300	39.78 ± 0.12	274 ± 63	115 ± 25	1.76 ± 0.31
H $\alpha$ Narrow	40.73 ± 0.02	274 ± 63	115 ± 25	15.90 ± 0.38
<b>H<math>\alpha</math> Broad</b>	<b>41.91 ± 0.01</b>	<b>3487 ± 84</b>	<b>1517 ± 28</b>	<b>241.49 ± 1.66</b>
[N II] 6585	40.72 ± 0.02	274 ± 63	115 ± 25	15.63 ± 0.37
[S II] 6718	40.32 ± 0.04	274 ± 63	115 ± 25	6.16 ± 0.34
[S II] 6732	40.27 ± 0.04	274 ± 63	115 ± 25	5.59 ± 0.34

## Emission Summary

H $\alpha$ broad SNR	9.65
H $\beta$ broad SNR	3.07
H $\gamma$ broad SNR	1.89
AGN frac	0.50
Host frac	0.50
$\log L_{5100, \text{Host}}$	43.28
Fe II/H $\beta$	0.19
Fe II/[O III]	0.41

## Quality Flags

spurious_hab/hbb	0/0
15100	1
balmer	0
balmer_snr	1
hb_width	1
balmer_width	1