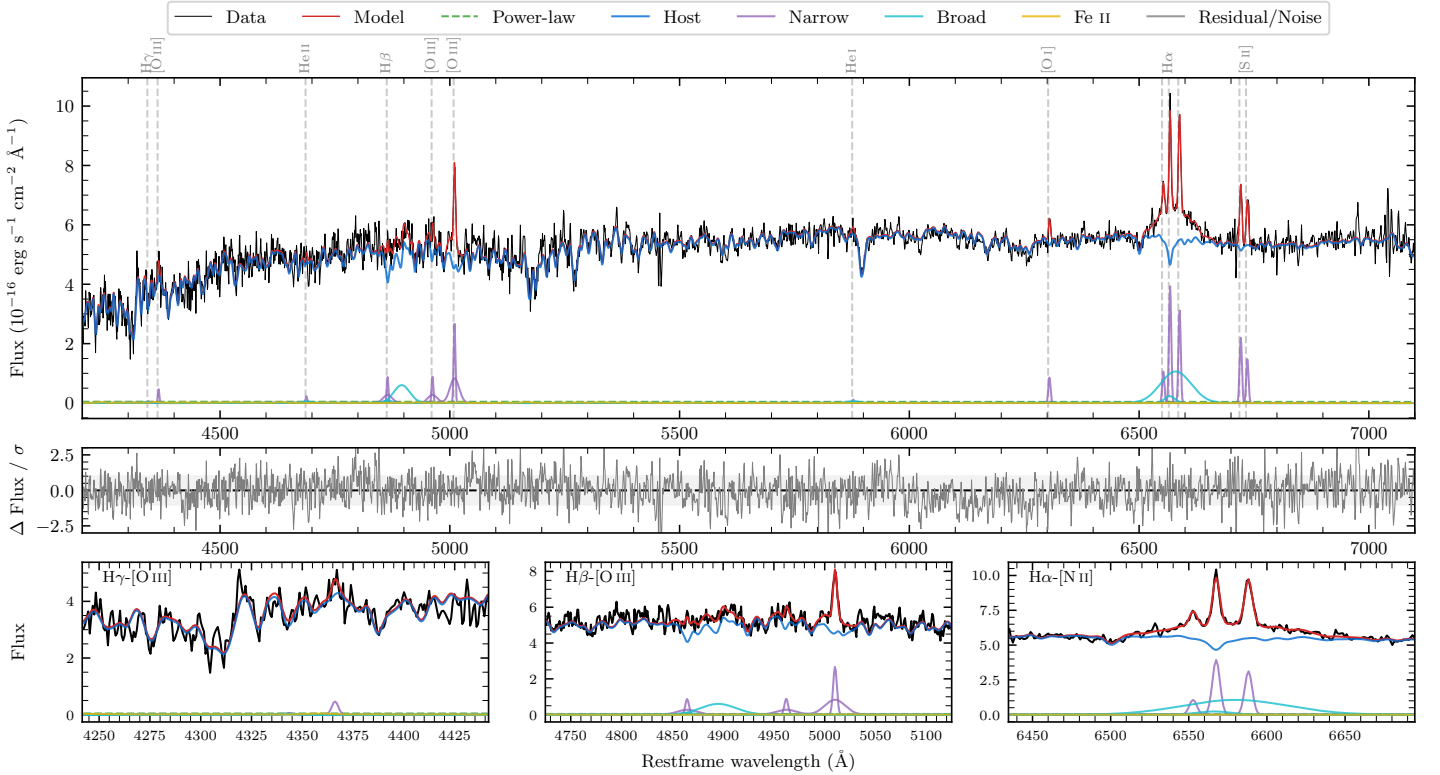
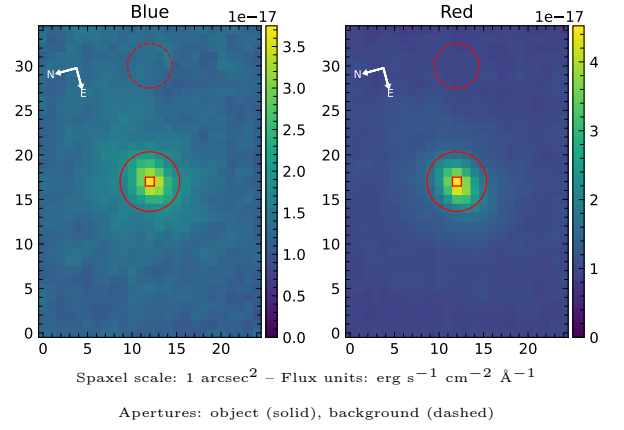


LEDA 1135750

Spectrum ID	14093579_sp1	Spectrum type	Sy 1.5
Alt name	g0135279-004448	Quality flag	good
z	0.0804	AGN reference	6dFGS
RA, Dec	23.8661, -0.7466	MW $E(B - V)$	0.029
MJD	60223.61	Power law α_ν	-1.62 ± 0.21
SNR/ \AA B/R	14.3/26.6	$\log L_{5100, \text{AGN}}$	41.53 ± 0.61
Obs airmass	1.16	$\log H\beta_{\text{Br}}/[\text{O III}]$	-0.06 ± 0.08
SMSS ID	14093579	$\log M_{L5100}/M_\odot$	6.71 ± 0.28
Neighbour	None $< 15''$	$\log M_{H\alpha}/M_\odot$	7.04 ± 0.07
SMSS $\langle r_6''_{\text{ap}} \rangle$	16.79 ± 0.05	$\log M_{H\beta}/M_\odot$	7.12 ± 0.11
2MASS K_{ext}	12.60 ± 0.12	$\log M_{[\text{O III}]} / M_\odot$	7.26 ± 0.10



Emission Line Measurements

Line	$\log L$ (erg s ⁻¹)	FWHM (km s ⁻¹)	σ (km s ⁻¹)	EW (Å)
H γ Narrow	—	—	—	—
Hγ Broad	—	—	—	—
[O III] 4364	39.51 ± 0.27	263 ± 62	111 ± 25	46.13 ± 18.11
He II Narrow	39.23 ± 0.38	263 ± 62	111 ± 25	24.93 ± 17.06
He II Broad	—	—	—	—
H β Narrow	40.26 ± 0.12	321 ± 64	481 ± 32	271.81 ± 39.89
Hβ Broad	40.70 ± 0.07	2729 ± 298	771 ± 41	724.71 ± 55.41
[O III] 5007	40.76 ± 0.04	321 ± 64	481 ± 32	863.97 ± 43.76
He I Narrow	39.04 ± 0.43	263 ± 62	111 ± 25	17.62 ± 12.15
He I Broad	39.57 ± 0.40	1655 ± 62	703 ± 25	59.88 ± 36.00
[O I] 6300	39.94 ± 0.08	263 ± 62	111 ± 25	142.69 ± 14.29
H α Narrow	40.61 ± 0.02	263 ± 62	111 ± 25	683.82 ± 14.15
Hα Broad	41.21 ± 0.02	3231 ± 213	1255 ± 27	2742.01 ± 56.40
[N II] 6585	40.51 ± 0.02	263 ± 62	111 ± 25	544.87 ± 13.77
[S II] 6718	40.37 ± 0.03	263 ± 62	111 ± 25	394.76 ± 17.54
[S II] 6732	40.20 ± 0.05	263 ± 62	111 ± 25	265.95 ± 20.86

Emission Summary

H α broad SNR	3.73
H β broad SNR	1.83
H γ broad SNR	0.00
AGN frac	0.01
Host frac	0.99
$\log L_{5100, \text{Host}}$	43.60
Fe II/H β	—
Fe II/[O III]	—

Quality Flags

spurious_hab/hbb	0/0
15100	2
balmer	1
balmer_snr	2
hb_width	1
balmer_width	2