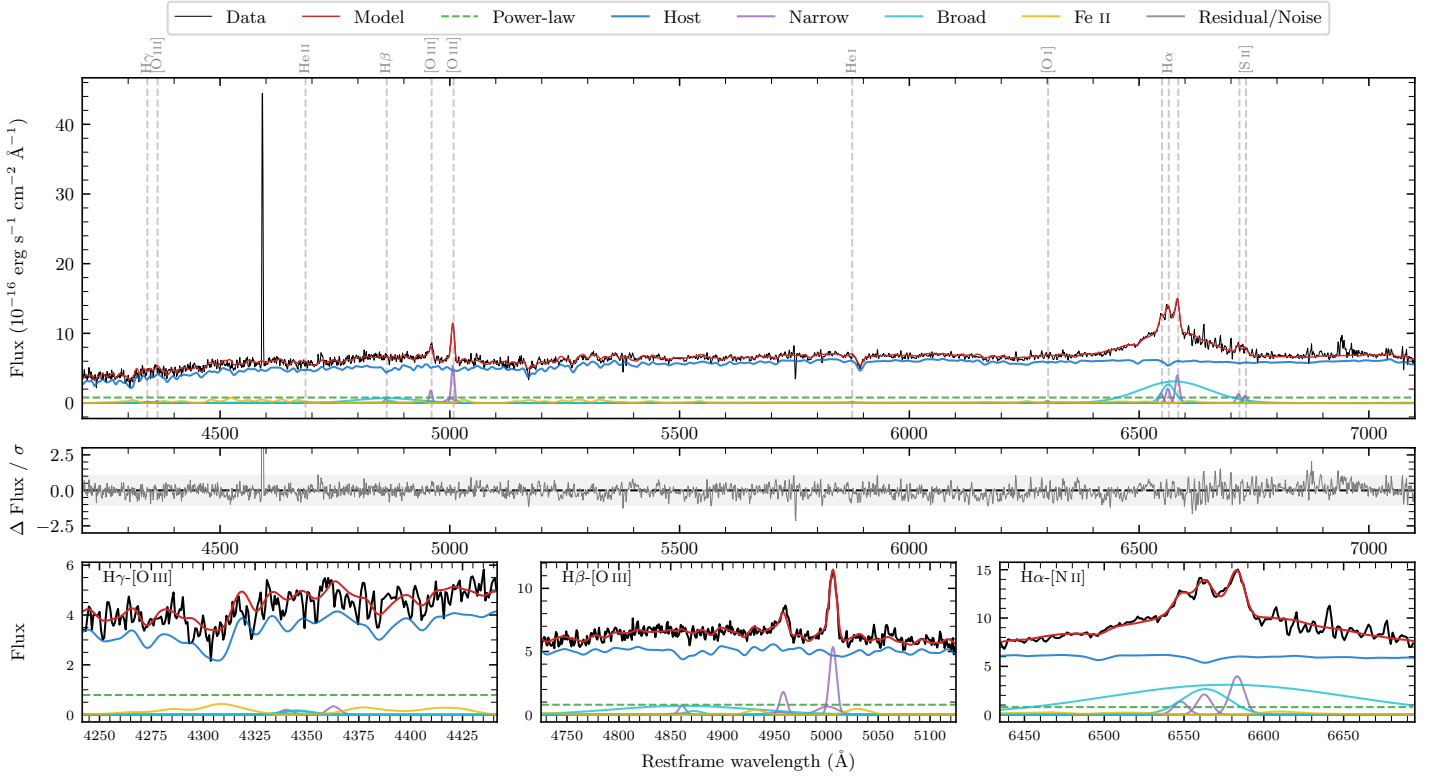
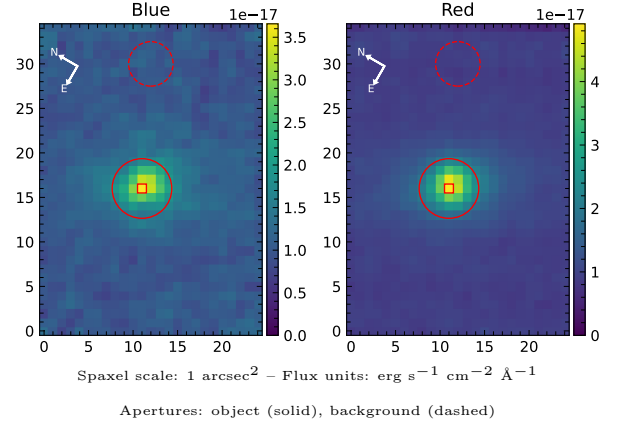


6dFGS gJ014458.6–023159

Spectrum ID	14082548_sp1	Spectrum type	Sy 1.5+
Alt name	g0144586–023159	Quality flag	good
z	0.0954	AGN reference	6dFGS
RA, Dec	26.2440, –2.5331	MW $E(B - V)$	0.022
MJD	60171.76	Power law α_ν	-1.99 ± 0.01
SNR/ \AA B/R	5.2/9.5	$\log L_{5100, \text{AGN}}$	42.97 ± 0.20
Obs airmass	1.14	$\log H\beta_{\text{Br}}/[\text{O III}]$	< 0.14
SMSS ID	14082548	$\log M_{L5100}/M_\odot$	–
Neighbour	None $< 15''$	$\log M_{\text{H}\alpha}/M_\odot$	7.74 ± 0.17
SMSS $\langle r_6'' \text{ap} \rangle$	16.34 ± 0.04	$\log M_{\text{H}\beta}/M_\odot$	–
2MASS K_{ext}	12.06 ± 0.08	$\log M_{[\text{O III}]} / M_\odot$	–



Emission Line Measurements

Line	$\log L$ (erg s $^{-1}$)	FWHM (km s $^{-1}$)	σ (km s $^{-1}$)	EW (Å)
H γ Narrow	–	–	–	–
Hγ Broad	–	–	–	–
[O III] 4364	–	–	–	–
He II Narrow	–	–	–	–
He II Broad	–	–	–	–
H β Narrow	40.31 ± 0.31	520 ± 67	369 ± 72	11.09 ± 6.85
Hβ Broad	< 41.35	–	–	–
[O III] 5007	41.20 ± 0.06	520 ± 67	369 ± 72	86.39 ± 8.27
He I Narrow	–	–	–	–
He I Broad	–	–	–	–
[O I] 6300	39.94 ± 0.40	488 ± 62	206 ± 25	4.80 ± 3.24
H α Narrow	40.78 ± 0.13	488 ± 62	206 ± 25	33.20 ± 3.70
Hα Broad	42.24 ± 0.02	3496 ± 644	2619 ± 40	950.69 ± 16.39
[N II] 6585	41.06 ± 0.05	488 ± 62	206 ± 25	63.17 ± 3.66
[S II] 6718	40.58 ± 0.13	488 ± 62	206 ± 25	20.76 ± 4.36
[S II] 6732	40.48 ± 0.15	488 ± 62	206 ± 25	16.60 ± 3.95

Emission Summary

H α broad SNR	5.00
H β broad SNR	0.91
H γ broad SNR	0.00
AGN frac	0.14
Host frac	0.86
$\log L_{5100, \text{Host}}$	43.76
Fe II/H β	–
Fe II/[O III]	1.54

Quality Flags

spurious_hab/hbb	0/0
15100	2
balmer	2
balmer_snr	2
hb_width	2
balmer_width	2